

# HRS Data Center Connector Lineup

Hirose Electric, as a world leader in the connectivity industry, has been developing a broad innovative electronic connectors over the years since its founding. Please visit our Web site for details of the listed products as well as other related product lines.

## High Speed BGA Mezzanine Connectors



### IT3 Series

**Data Rate: 6.25+Gbps**

- Differential, single-ended and power through one package
- Floating 3-piece structures for mounting flexibility and excellent reflow solderability
- Stacking Height (mm): 14-40
- Pin Counts: 100, 200, 300



### IT5 Series

**Data Rate: 25+Gbps**

- Designed with optimal signal integrity and used the proved floating 3-piece structure of the IT3 series
- The Helix interposer with HRS original FEXT cancelation technologies
- Stacking Height (mm): 14-40
- Pin Counts: 100, 200, 300



### IT8 Series

**Data Rate : 56+Gbps**

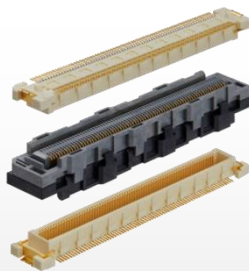
- New design realizes low stacking height and floating mechanism (2-piece)
- HRS original FEXT cancelation technologies and quasi-coaxial structure enable ultra high-speed signal transmission
- Stacking Height (mm): 10-13mm (2-piece), 14-46mm (3-piece)
- Pin Counts: 120, 192, 288



### FX10 Series

**Data Rate: 10+Gbps**

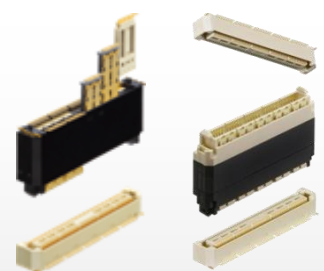
- Pitch: 0.5mm
- Impedance: 85 & 100Ω
- Stacking Height (mm): 4-8
- Pin Counts: 80-168



### \*FX10 3-piece type

**Data Rate: 15+Gbps**

- Pitch: 0.5mm
- Impedance: 85 & 100 Ω
- Floating 3-piece structures for mounting flexibility
- Stacking Height (mm): 8-13
- Pin Counts: 120, 144, 168



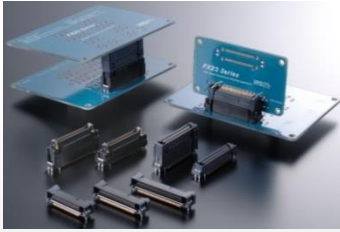
### XG1 Series

**Data Rate: 10+Gbps**

- Pitch: 0.5mm
- Multiple blades for differential 85 & 100 Ω, single-ended and power
- Stacking Height (mm): 15-20 (2-piece), 25-38 (3-piece)
- Pin Counts: 52-260

Specifications herein are subject-change without notice. Please contact Hirose for the latest specifications, drawings and availabilities.

# High Speed SMT Board-to- Board Connectors

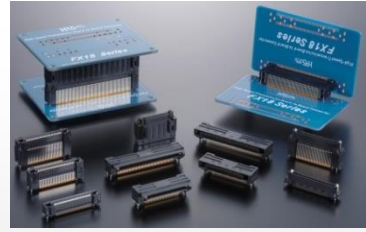


## \*FX23 Series

**Data Rate: 8+Gbps**

- Pitch: 0.5mm
- Floating structures for mounting flexibility
- Stacking Height (mm): 15, 20, 25, 30
- Pin Counts: 20, 40, 60, 80, 100, 120pos.
- Orientation: Mezzanine and Vertical

\*Contact Hirose for detail availabilities.



## FX18 Series

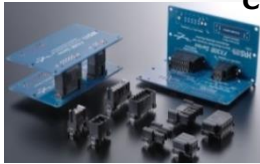
**Data Rate: 10+Gbps**

- Pitch: 0.8mm
- Multi-function contacts for power, ground and sequential connections
- Stacking Height (mm): 10, 15, 20, 25, 30 (2-piece)  
35, 40, 45 (3-piece)
- Pin Counts: 40, 60, 80, 100, 120, 140pos.
- Orientation: Mezzanine, Coplanar and Vertical

# Power Connectors

## FX30B Series

**Current: 25A Max.**



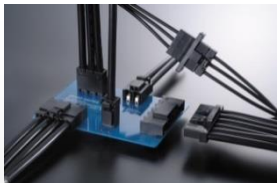
- Mated Height (mm):  
11 (Coplanar, Vertical)  
20, 25, 25, 26, 30 (Mezzanine)
- Positions: 2-5pos.

## IT-P Series

**Current: 60A Max.**



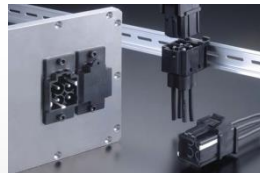
- Stacking Height (mm): 21-44
- Floating 3-piece structures for mounting flexibility
- Positions: 2pos.



## DF60 Series

**Current: 65A Max.**

- Pin Counts: 1-6pos.
- Pitch: 10.16mm
- AWG wire: 8, 10, 12
- HRS Original independent 5-point contact secures high contact reliability



## EM35M Series

**Current: 70A Max.**

- Pin Counts: 4pos.  
(Three phase power source + ground)
- AWG wire: 8
- Quick and secure snap-on lock
- Configuration: DIN rail mount & Panel mount



## EF1 Series

**Current: 160A Max.**

- Pin Counts: 1pos.
- Conductor Size: 8mm<sup>2</sup>
- Quick and secure snap-on lock
- Configuration: DIN rail mount & Panel mount

For more information about Hirose products

[Japan]		TEL: +81-45-620-3491
[China]	(Shanghai)	TEL: +86-21-6391-3355
	(Beijing)	TEL: +86-10-5165-9332
	(Shenzhen)	TEL: +86-755-8207-0851
[Hong Kong]	(Kowloon)	TEL: +852-2803-5338
[Taiwan]	(Taipei)	TEL: +886-2-2555-7377
[Korea]	(Siheung)	TEL: +82-31-496-7000
[Singapore]	(Anson Road)	TEL: +65-6324-6113
[India]	(Delhi)	TEL: +91-12-660-8018
	(Bangalore)	TEL: +91-80-4120-1907
[Malaysia]	(Penang)	TEL: +604-619-2564
[Thailand]	(Bangkok)	TEL: +66-2-686-1255
[USA]	(Chicago) (USA HQ)	TEL: +1-630-282-6700
	(San Jose)	TEL: +1-408-253-9640
	(Detroit) (Automotive)	TEL: +1-734-542-9963

[The Netherlands]	(Amsterdam)	TEL: +31-20-6557460
[Germany]	(Stuttgart)	TEL: +49-711-456002-221
	(Nuremberg)	TEL: +49-911-326889-63
	(Hanover)	TEL: +49-511-978261-30
[France]	(Paris)	TEL: +33-1-85764886
[UK]	(Milton Keynes)	TEL: +44-1908-202050

<https://www.hirose.com/>



Specifications herein are subject-change without notice. Please contact Hirose for the latest specifications, drawings and availabilities.