

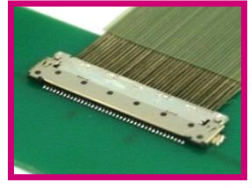
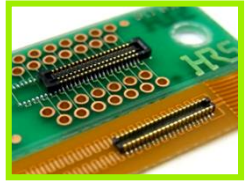
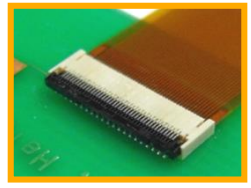
Hirose's Connectors for Tablet PC

1. LCD Connection

FPC Connector
(1-Piece)

Board to FPC
(2-Piece)

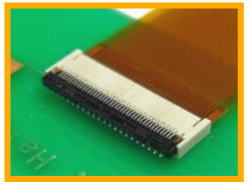
Micro Coaxial Connector



2. Touch Panel Connection

3. LED Backlight Connection

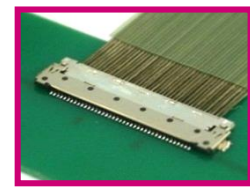
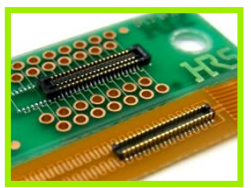
FPC Connector
(1-Piece)



4. Camera Connection

Board to FPC
(2-Piece)

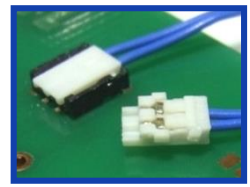
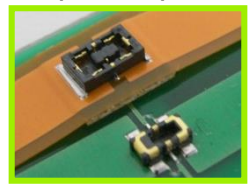
Micro Coaxial Connector



5. Battery Connection

Board to FPC
(2-Piece)

Board to Wire

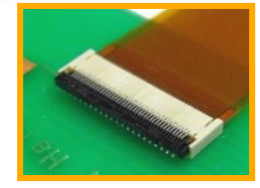


6. Speaker/Microphone Connection

Board to Wire



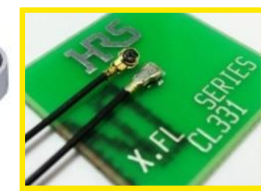
FPC Connector
(1-Piece)



7. Antenna Connection

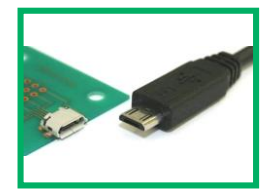
Miniature RF Connector

RF Switch

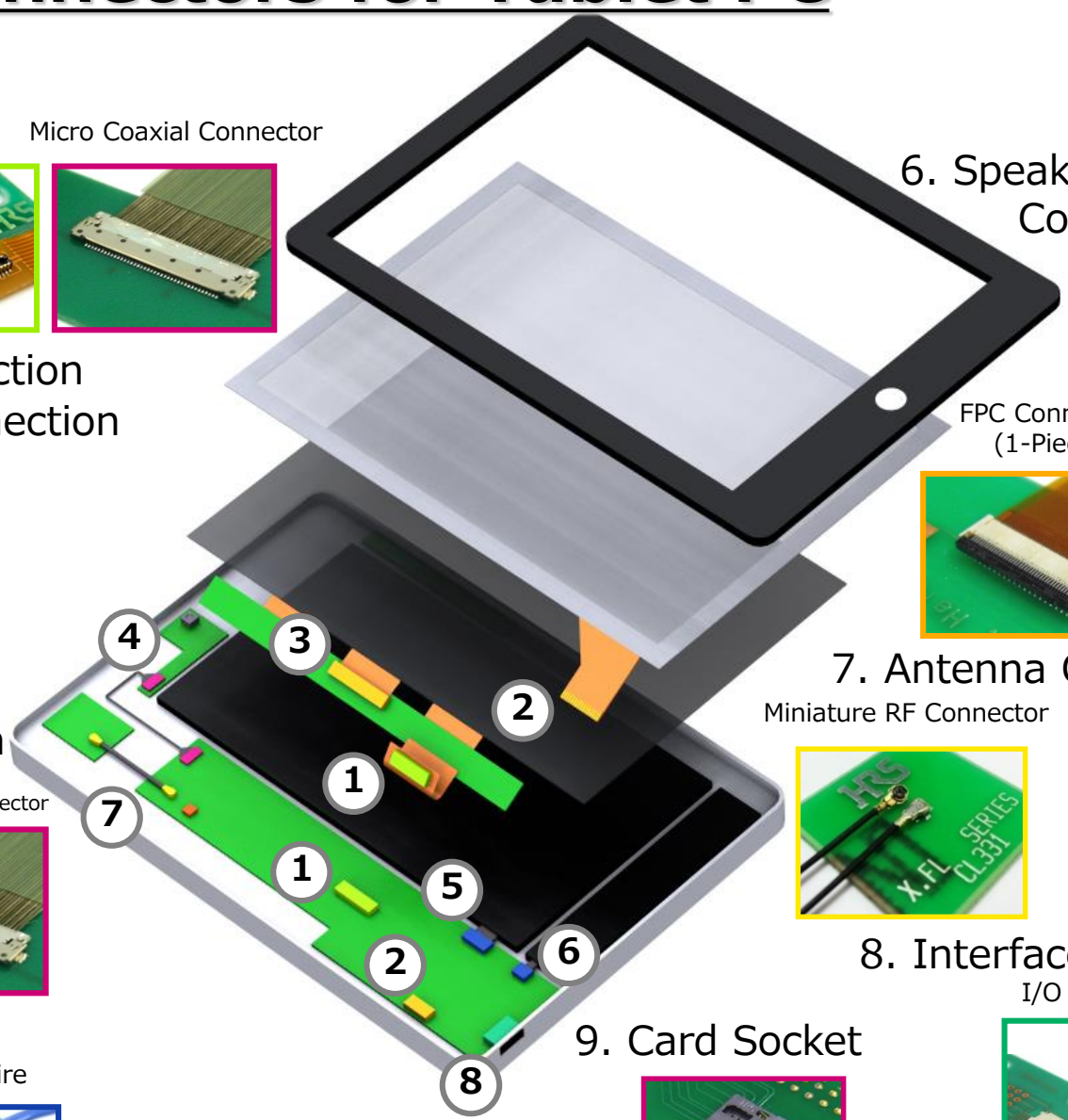
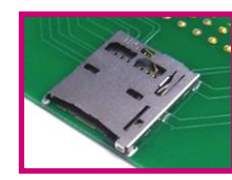


8. Interface Connection

I/O Connector



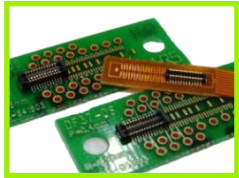
9. Card Socket



1. Connectors for LCD Connection

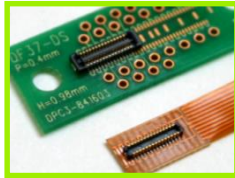
Board to FPC (2-Piece)

DF37



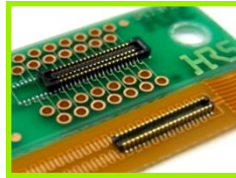
Wide pin count variation
Pitch: 0.4mm
Stacking Height:
0.98/1.5mm
Depth: 2.98mm
Pin Counts: 10 to 80pos.
Rated Current: 0.3A

DF40



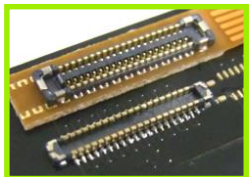
Wide varieties of stacking height
Pitch: 0.4mm
Stacking Height:
1.5 to 4.0mm
Depth: 3.38mm
Pin Counts: 10 to 100pos.
Rated Current: 0.3A

BM20



Commonly used for FPC connection
Pitch: 0.4mm
Stacking Height:
0.6/0.8mm
Depth: 2.3mm
Pin Counts: 10 to 60pos.
Rated Current: 0.3A

BM23FR



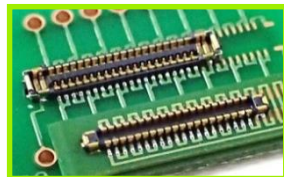
Small,
Wide pin count variations
Pitch: 0.35mm
Stacking Height: 0.6mm
Depth: 1.98mm
Pin Counts: 6 to 60pos.
Rated Current: 0.3A

BM24



Hybrid connector up to 5A
Pitch: 0.35mm
Stacking Height: 0.8mm
Depth: 2.3mm
Pin Counts: 10 to 50+2pos.
Rated Current:
5A for power
0.25A for signal

BM28



Low profile, Space saving hybrid connector up to 5A
Pitch: 0.35mm
Stacking Height: 0.6mm
Depth: 1.7mm
Pin Counts: 6 to 60+2pos.
Rated Current:
5A for power
0.3A for signal

FPC Connector (1-Piece)

FH35C



0.3mm pitch standard connector
Top/Bottom Contact
Pitch: 0.3mm
Height: 0.9mm
Depth: 3.2mm
Pin Counts: 9 to 61pos.
Rated Current: 0.2A

FH34SRJ



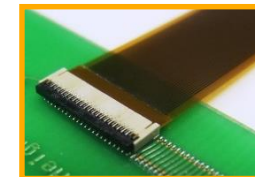
High retention force, Ideal less pin connection
Top/Bottom Contact
Pitch: 0.5mm
Height: 1.0mm
Depth: 3.2mm
Pin Counts: 4 to 50pos.
Rated Current: 0.5A

FH62

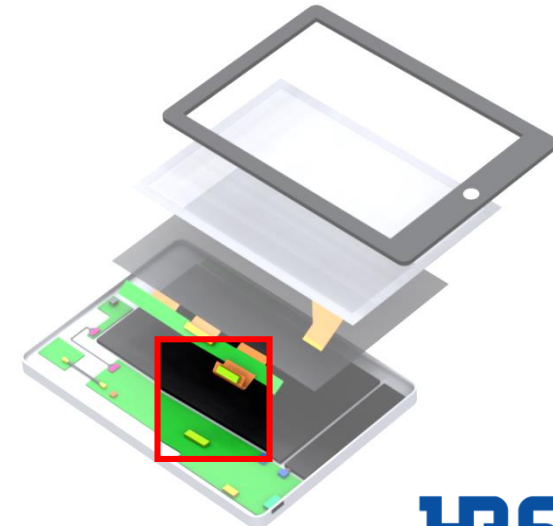


One action lock FPC connector
Top Contact
Pitch: 0.25mm
Height: 1.1mm
Depth: 4.0mm
Pin Counts: 35pos.
Rated Current: 0.2A

FH58



Space saving, Multipurpose connector
Top Contact
Pitch: 0.2mm (FH58M: 0.25mm)
Height: 0.9mm
Depth: 3.1mm
Pin Counts: 7 to 71pos.
Rated Current: 0.2A



※Variations under development are included. Confirm the latest information through your HRS contact person. (As of Nov, 2017)

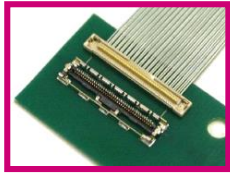
1. Connectors for LCD Connection (High Speed)

Micro Coaxial Connector

Board to FPC (2-piece)

FPC Connector (1-piece)

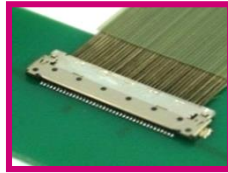
DF36



**LVDS
MIPI**

0.4mm pitch
space saving connector
Pitch: 0.4mm
Mated Height: 1.5mm
Mated Depth: 2.8 / 4.4mm
Pin Counts: 15 to 50pos.
AWG wire: 42 to 46
(Discrete: AWE wire 34, 36, ϕ 0.33mm Max.)
Rated Current: 0.2 to 0.25A

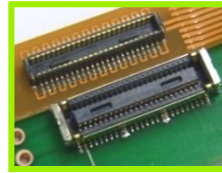
DF49



**LVDS
eDP**

Ultra low profile connector
Pitch: 0.4mm
Mated Height: 0.7mm
Mated Depth: 4.83mm
Pin Counts: 20, 40pos.
AWG wire: 42 to 46
(Discrete: AWG wire 34, 36, ϕ 0.37mm Max.)
Rated Current: 0.15 to 0.25A

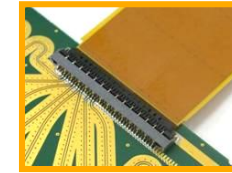
DF40G



**Type C
LVDS
MIPI**

EMI prevention with shielding
Pitch: 0.4mm
Stacking Height: 1.5/3.0mm
Depth: 3.68mm
Pin Counts: 10 to 70pos.
Rated Current: 0.3A

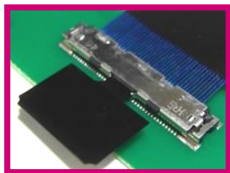
FH55/FH55M



**Type C
LVDS
eDP**

5+Gbps high speed transmission
Bottom contact
Pitch: 0.5/0.4mm
Height: 1.5mm
Depth: 4.2mm
Pin Counts: 10, 22, 31, 40pos.
Rated Current: 0.5/0.4A

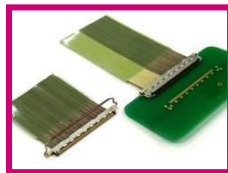
DF80



**Type C
LVDS
eDP**

Space saving,
User-friendly operation
Pitch: 0.5mm
Mated Height: 1.72mm
Mated Depth: 5.1mm
Pin Counts: 30, 40, 45, 50pos.
AWG wire: 40 to 46
(Discrete: AWG wire 32, 36, ϕ 0.5mm Max.)
Rated Current: 0.1 to 0.5A

DF81



**Type C
LVDS
eDP
MIPI**

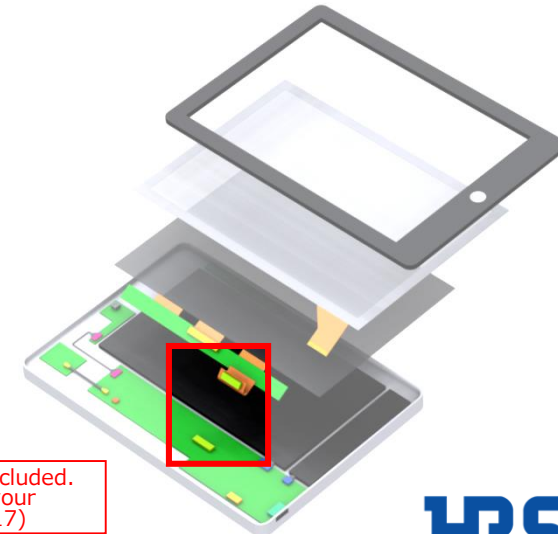
Space saving with rotary latch
Horizontal Mating
Pitch: 0.4mm
Mated Height: 0.9mm
Mated Depth: 4.4mm
Pin Counts: 30, 40, 50pos.
AWG wire: 36 to 46
(Discrete: AWE wire 34 to 40, ϕ 0.4mm Max.)
Rated Current: 0.1 to 0.8A

DF40GL



Positive lock
Pitch: 0.4mm
Stacking Height: 1.5mm
Stacking Height: 3.68mm
Pin Counts: 44pos.
Rated Current: 0.35A

※Variations under development are included.
Confirm latest information through your
HRS contact person. (As of Nov, 2017)



2. Connectors for Touch Panel Connection

FPC Connector (1-piece)

FH29DJ



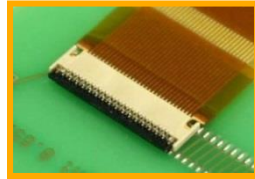
Small, High pin count
Bottom Contact
Pitch: 0.2mm
Height: 1.2mm
Depth: 4.50mm
Pin Counts: 44 to 120pos.
Rated Current: 0.25A

FH36W



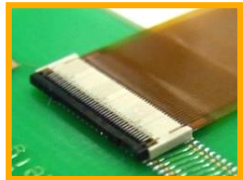
Saves in depth,
High retention force
Bottom Contact
Pitch: 0.3mm
Height: 0.95mm
Depth: 2.7mm
Pin Counts: 11 to 61pos.
Rated Current: 0.2A

FH42



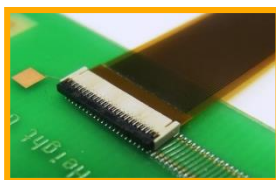
Ultra low profile connector
Top Contact
Pitch: 0.3mm
Height: 0.65mm
Depth: 3.08mm
Pin Counts: 7 to 51pos.
Rated Current: 0.2A

FH53



Ultra low-profile,
High density connector
Top Contact
Pitch: 0.2/0.25/0.3mm
Height: 0.65mm
Depth: 3.2mm
Pin Counts: 7 to 51pos.
Rated Current: 0.2A

FH58

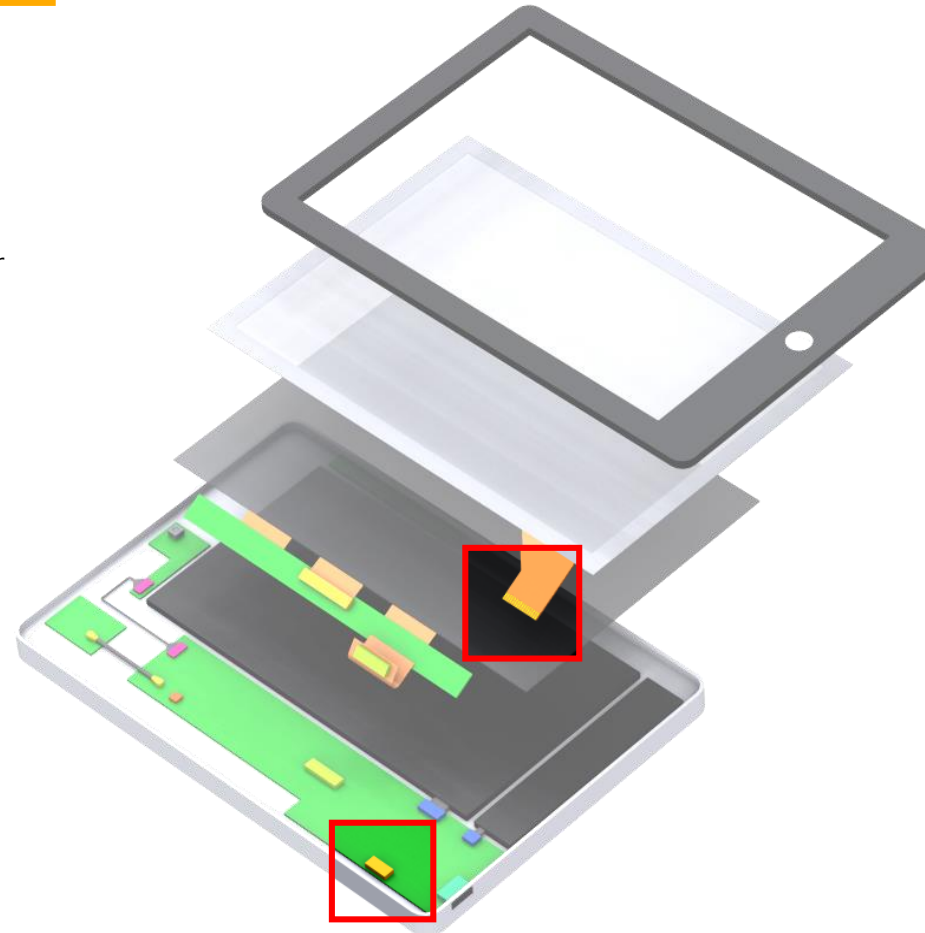


Space saving,
Multipurpose connector
Top/Bottom Contact
Pitch: 0.2/0.25mm
Height: 0.9mm
Depth: 3.1mm
Pin Counts: 7 to 71pos.
Rated Current: 0.2A

FH64MA



The world's lowest profile
Top contact
Pitch: 0.25mm
Height: 0.5mm
Depth: 3.15mm
Pin Counts: 7 to 21pos.
Rated current: 0.2A



※Variations under development are included. Confirm the latest information through your HRS contact person. (As of Nov, 2017)

3. Connectors for LED Backlight Connection

FPC Connector (1-piece)

FH19C/SC/D/SD



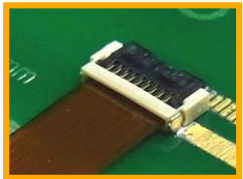
Commonly used for FPC connection
Bottom Contact
Pitch: 0.5mm
Height: 0.9/0.93mm
Depth: 3.0/3.4mm
Pin Counts: 4 to 50pos.
Rated Current: 0.5A

FH34SRJ

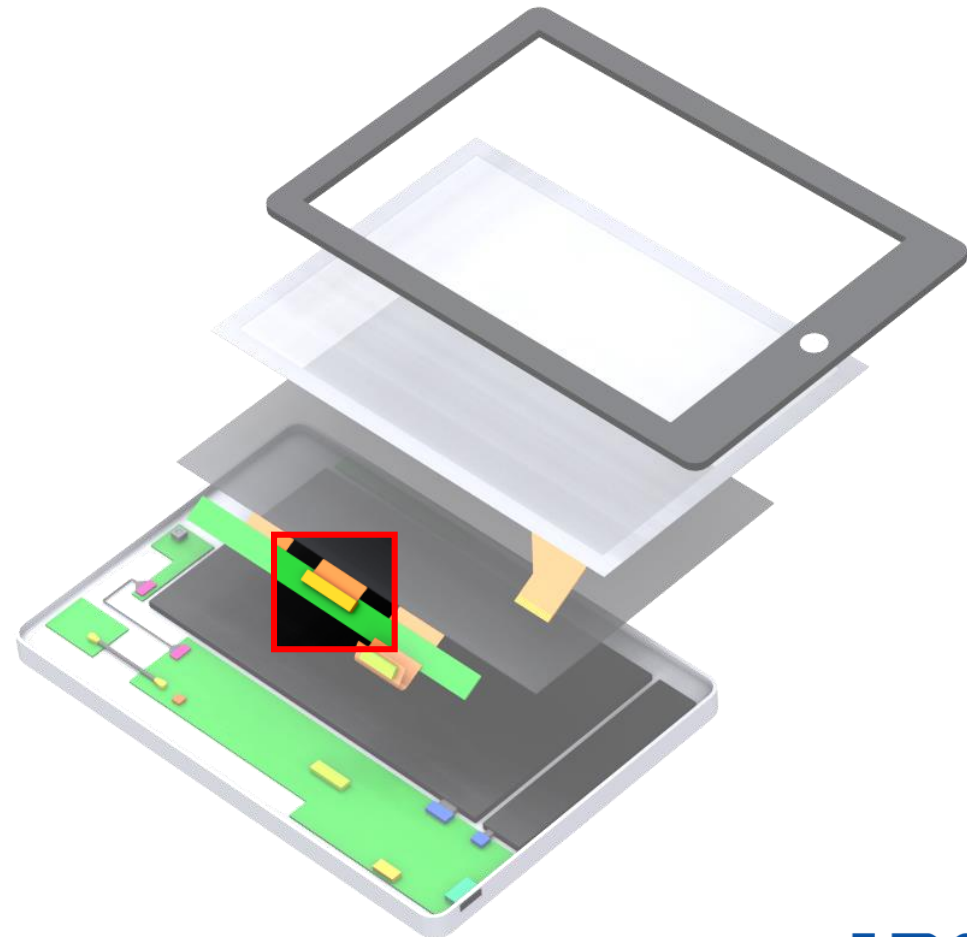


High retention force,
Ideal less pin connection
Bottom Contact
Pitch: 0.5mm
Height: 1.0mm
Depth: 3.2mm
Pin Counts: 4 to 50pos.
Rated Current: 0.5A

TF13



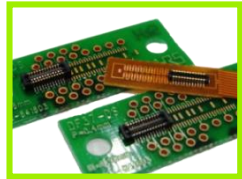
Back flip, Space saving,
High retention force
Bottom Contact
Pitch: 0.4mm
Height: 0.9mm
Depth: 3.0mm
Pin Counts: 6 to 20pos.
Rated Current: 0.5A



4. Connectors for Camera Connection

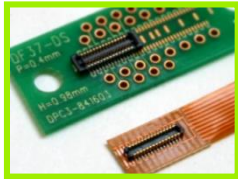
Board to FPC (2-piece)

DF37



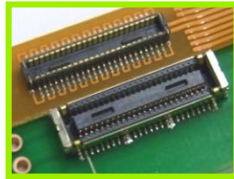
Wide pin count variation
Pitch: 0.4mm
Stacking Height:
0.98/1.5mm
Depth: 2.98mm
Pin Counts: 10 to 80pos.
Rated Current: 0.3A

DF40



Wide varieties of
stacking height
Pitch: 0.4mm
Stacking Height:
1.5 to 4.0mm
Depth: 2.98/3.38mm
Pin Counts: 10 to 100pos.
Rated Current: 0.3A

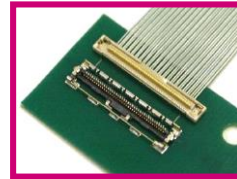
DF40G



EMI prevention with shielding
Pitch: 0.4mm
Stacking Height: 1.5/3.0mm
Depth: 3.68mm
Pin Counts: 10 to 70pos.
Rated Current: 0.3A

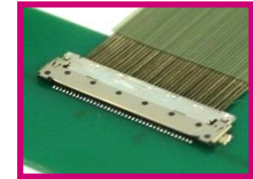
Micro Coaxial Connector

DF36



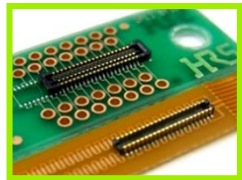
0.4mm pitch
space saving connector
Pitch: 0.4mm
Mated Height: 1.5mm
Mated Depth: 2.8/4.4mm
Pin Counts: 15 to 50pos.
AWG wire: 42 to 46
(Discrete: AWG wire 34, 36, ϕ 0.33mm Max.)
Rated Current: 0.2 to 0.25A

DF49



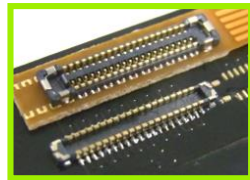
Ultra low-profile connector
Pitch: 0.4mm
Mated Height: 0.7mm
Mated Depth: 4.83mm
Pin Counts: 20, 40pos.
AWG wire: 42 to 46
(Discrete: AWG wire 34, 36, ϕ 0.37mm Max.)
Rated Current: 0.15 to 0.25A

BM20



Commonly used for
FPC connection
Pitch: 0.4mm
Stacking Height: 0.8mm
Depth: 2.3mm
Pin Counts: 10 to 60pos.
Rated Current: 0.3A

BM23FR

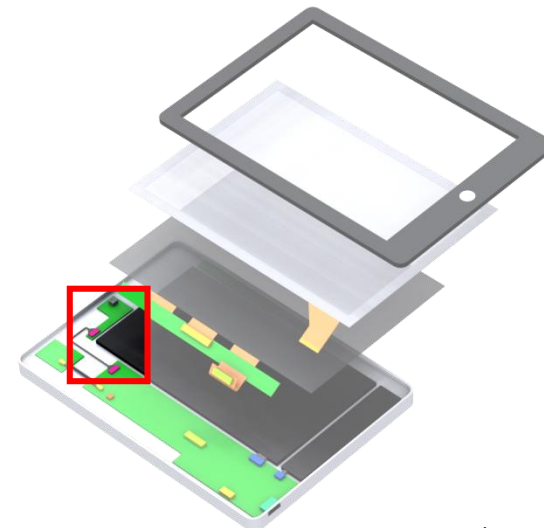


Small,
Wide pin count variations
Pitch: 0.35mm
Stacking Height: 0.6mm
Depth: 1.98mm
Pin Counts: 6 to 60pos.
Rated Current: 0.3A

BM28



Low profile, Space saving
hybrid connector up to 5A
Pitch: 0.35mm
Stacking Height: 0.6mm
Depth: 1.7mm
Pin Counts: 6 to 60+2pos.
Rated Current:
5A for power
0.3A for signal

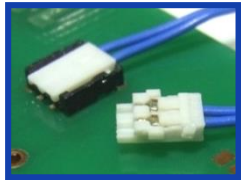


5. Connectors for Battery Connection

Board to Wire

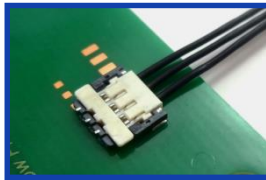
Board to FPC (2-piece)

DF57H



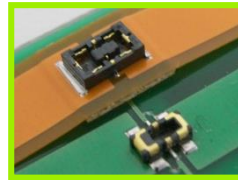
Low profile, Swing lock
Pitch: 1.2mm
Mated Height: 1.4mm
Depth: 4.35mm
Pin Counts: 2 to 6pos.
AWG wire: 28 to 34
Rated Current: 0.5 to 2.5A

DF58



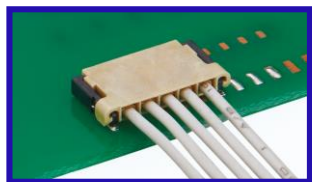
The world's lowest profile
with 28 AWG
Pitch: 1.2mm
Mated Height: 1.0mm
Depth: 4.72mm
Pin Counts: 2 to 6pos.
AWG wire: 28 to 30
Rated Current: 1.5 to 3.0A

BM22



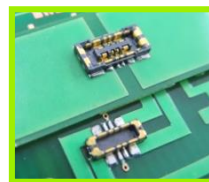
Commonly used for FPC connection
Power Connectors
Mated Height: 0.9mm
Mated Depth: 2.64mm
Pin Counts: 2+2,4+2pos.
Rated Current:
5A for power
0.25A for signal

DF65

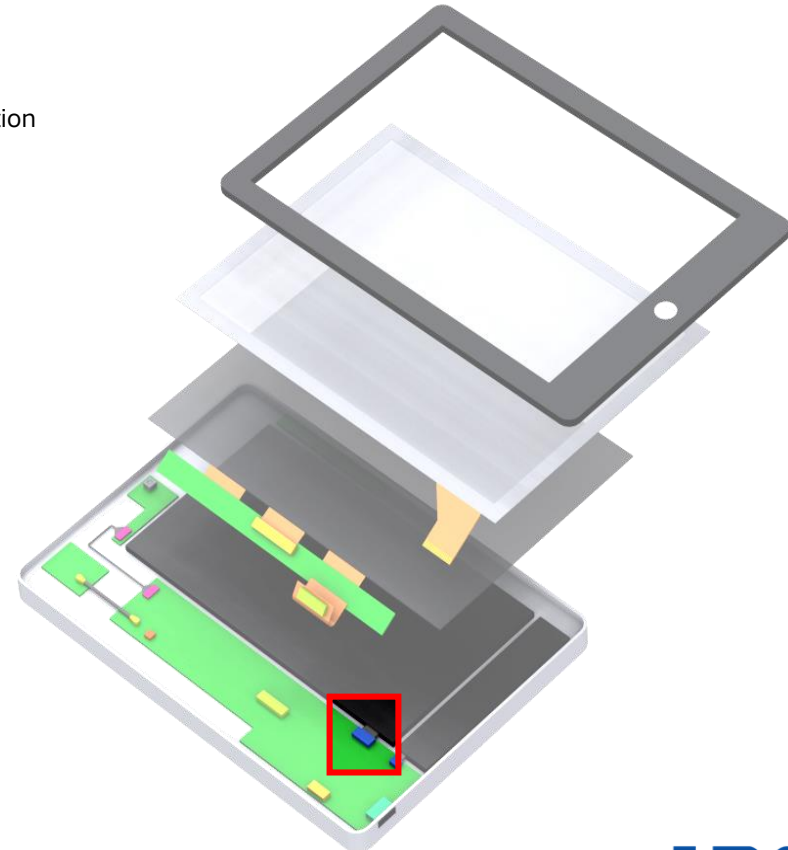


Small, High current capability
Pitch: 1.7mm
Mated Height: 1.8mm
Depth: 6.3mm
Pin Counts: 3 to 7pos.
AWG wire: 24
Rated Current: 4A

BM25



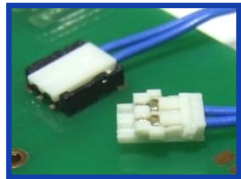
Ideal for the quick charge
Power Connectors
Mated Height: 0.7mm
Mated Depth: 2.6mm
Pin Counts: 4+2pos.
Rated Current:
10A for power
0.3A for signal



6. Connectors for Speaker/Microphone Connection

Board to Wire

DF57H



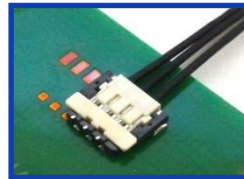
Low profile, Swing lock
Pitch: 1.2mm
Mated Height: 1.4mm
Depth: 4.35mm
Pin Counts: 2 to 6pos.
AWG wire: 28 to 34
Rated Current: 0.5 to 2.5A

DF52



Small, High current capability
Pitch: 0.8mm
Mated Height: 1.75mm
Depth: 4.1mm
Pin Counts: 2 to 20pos.
AWG wire: 28 to 32
Rated Current: 0.8 to 2.5A

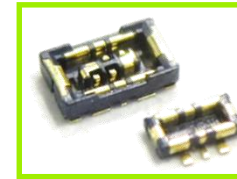
DF58



The world's lowest profile with 28 AWG
Pitch: 1.2mm
Mated Height: 1.0mm
Depth: 4.72mm
Pin Counts: 2 to 6pos.
AWG wire: 28 to 30
Rated Current: 1.0 to 3.0A

Board to FPC (2-piece)

BM29



Ultra small hybrid connector
Power Hybrid
Stacking Height: 0.6mm
Depth: 1.5mm
Pin Counts: 2+2pos.
Rated Current:
3A for power
0.3A for signal

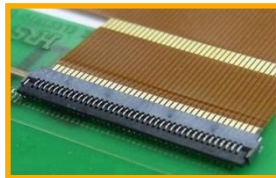
FPC Connector(1-piece)

FH19C/SC/D/SD

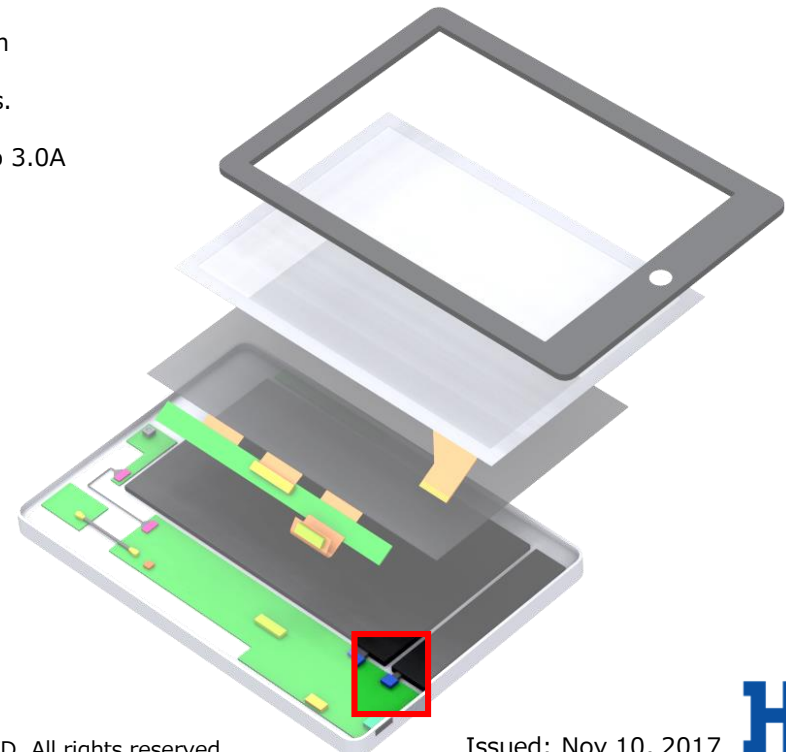


Commonly used for FPC connection
Bottom Contact
Pitch: 0.5mm
Height: 0.9/0.93mm
Depth: 3.0/3.4mm
Pin Counts: 4 to 50pos.
Rated Current: 0.5A

FH34SRJ



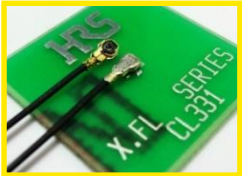
High retention force,
Ideal less pin connection
Bottom Contact
Pitch: 0.5mm
Height: 1.0mm
Depth: 3.2mm
Pin Counts: 4 to 50pos.
Rated Current: 0.5A



7. Connectors for Antenna Connection

Miniature RF Connector

X.FL



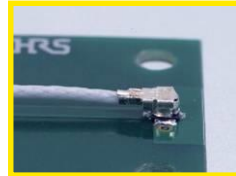
Ultra small connector
Mated Height: 0.94mm Max.
Frequency: 0 to 12GHz
V.S.W.R.: 1.7 Max.

X.FL (Low Loss)



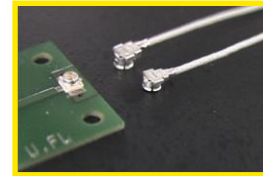
WiGig standard
Mated Height: 1.3mm Max.
Frequency: 0 to 12GHz
V.S.W.R.: 1.7 Max.
Intel WiGig recommended

W.FL2



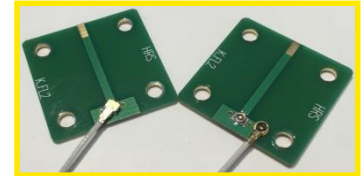
Small interface connector
Mated Height: 1.18mm Max.
Frequency: 0 to 6GHz
V.S.W.R.: 1.6 Max.

U.FL



Excellent high frequency
Mated Height: 1.9mm Max.
Frequency: 0 to 6GHz
V.S.W.R.: 1.5 Max.

K.FL2



WiFi standard
Mated Height: 1.2mm Max.
Frequency: 0 to 6GHz
V.S.W.R.: 1.45 Max.

RF Switch

MS-156C



Commonly used for RF switch
Height: 1.35mm
Frequency: 0 to 11GHz
V.S.W.R.: 1.5 Max.

MS-180

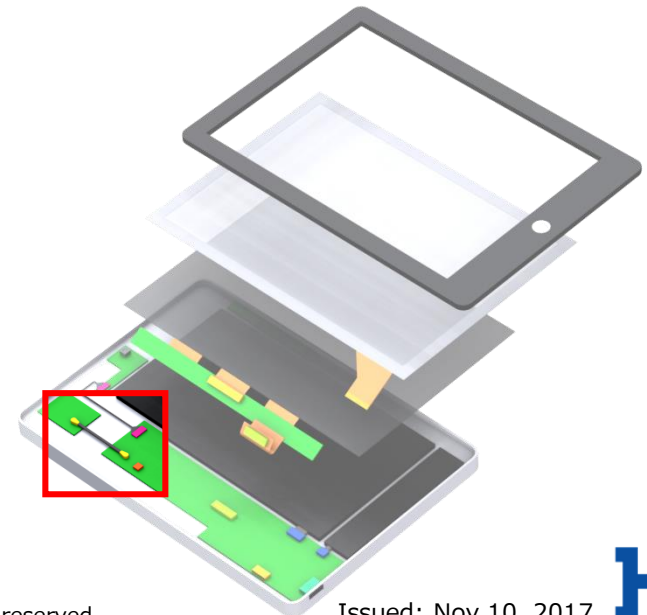


Small switch for checking terminal
Height: 0.85mm
Frequency: 0 to 11GHz
V.S.W.R.: 1.4 Max.

MS-190



The world's smallest,
Ultra low to profile
Height: 0.68mm
Frequency: 0 to 11GHz
V.S.W.R.: 1.4 Max.



8. Connectors for Interface Connection

I/O Connector



Micro-USB2.0 connector



Overmolded type micro-USB2.0 Receptacles for splash resistance



Micro-USB3.0 connector



USB Type-C connector USB3.1 Gen1 Mid-mount Space saving



USB Type-C connector USB3.1 Gen2 On-board Robust



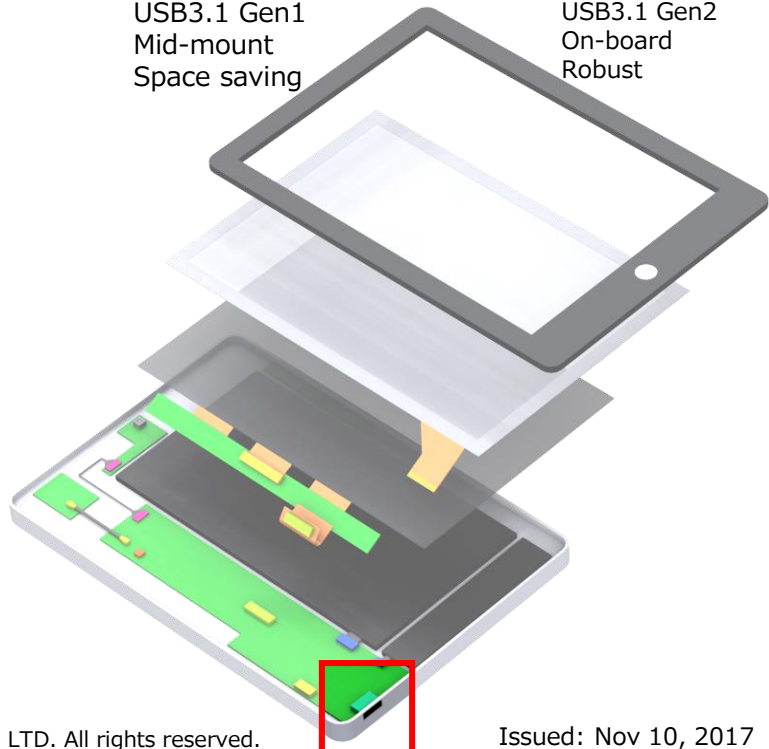
0.5mm pitch ultra-low profile 12, 16 and 20pos.



0.5mm pitch space saving 10, 18, 24 and 36pos.

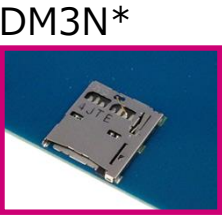


0.4mm pitch space-saving 18pos.

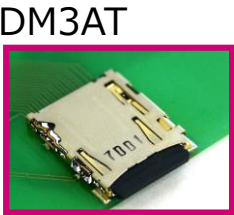


9. Card connectors

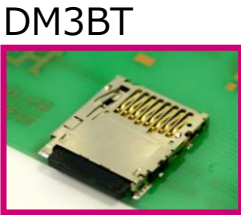
Micro SD card



DM3N*
Push-Push Type
Top mount
Height: 1.15/1.25mm
Card Detection Switch

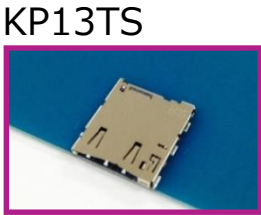


DM3AT
Push-Push Type
Top mount
Height: 1.68mm
Card Detection Switch



DM3BT
Push-Push Type
Bottom mount
Height: 1.83
Card Detection Switch

Nano SIM



KP13TS
Tray Type
Top mount
Height: 1.45mm
Card Detection Switch

Micro SD + Nano SIM



KP15B
Push-Pull Type
Top mount
Height: 1.37/1.55mm
Card Detection Switch

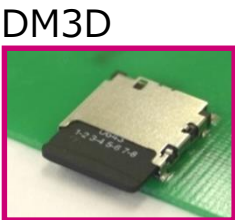


KP15TB*
Tray Type
Top mount
Height: 1.37/1.55mm
Card Detection Switch

Micro SIM card



DM3C
Push-Pull Type
Top mount
Height: 1.55mm
Card Detection Switch



DM3D
Push-Pull Type
Top mount
Height: 1.83mm
Card Detection Switch



KP10S
Push-Push Type
Top mount
Height: 1.18mm
Card Detection Switch



KP10BH
Push-Pull Type
Top mount
Height: 1.18mm
Card Detection Switch

