

HRS Smart Meter Connector Lineup

R12009E_3

Hirose Electric, as a world leader in the connectivity industry, has been developed a broad innovative electronic connectors over the years since its founding. Please visit our Web site for details of the listed products as well as other related product lines.

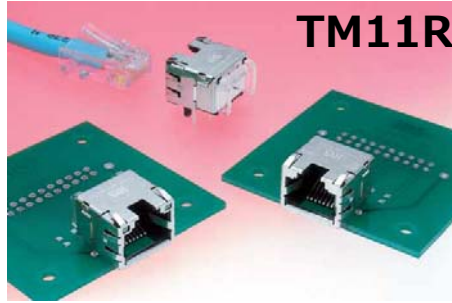
Interface

Waterproof and Small-Size RJ-45 Modular Connector



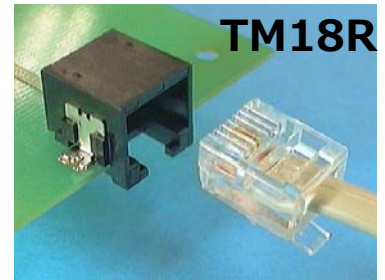
IP68* Water Resistance
Push-Pull Lock

*Our test conditions:
No water intrusion, while submerged in 2 meter water depth for 14 days in mated condition.

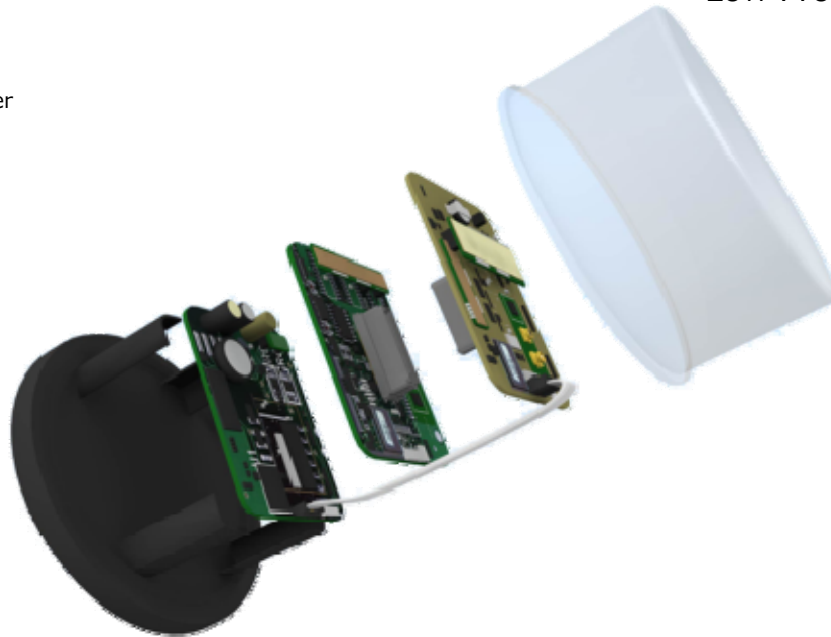


EMI Prevention

Modular Connector



Low Profile, SMT



Coaxial

RF Antenna



Mated Height: 1.9 or 2.3mm
Frequency: 0-6 GHz
V.S.W.R.: 1.3 Max.



Height: 0.85mm
Frequency: 0-11 GHz
V.S.W.R.: 1.4 Max

Coaxial Switch for Check



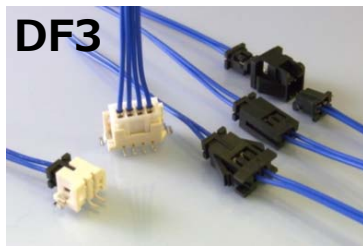
Height : 1.35mm
Frequency : 0~11GHz
V.S.W.R. : 1.5 Max.

*Specifications herein are subject to change without notice. Contact Hirose for the latest specifications, drawings, and availabilities.

Signal

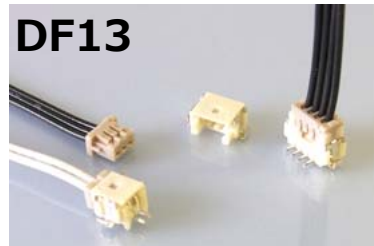
R12009E_3

Board to Wire



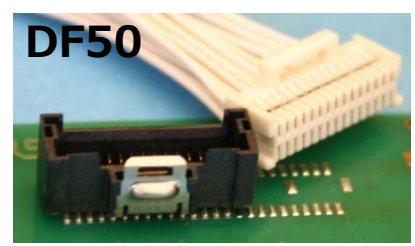
DF3

3A, 250V



DF13

1A, 150V



DF50

1A Max., 100V



DF61Y

4A Max., 350V,
ViSe Lock



DF57H

2.5A Max., 100V,
Swing Lock



DF59

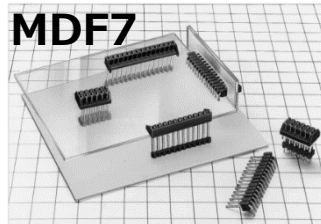
3A, 230V, Swing Lock
3-WAY system connector

Board to Board



FX20

0.5A, 50V
Stacking Height:
15, 20, 25, 30mm
±0.6mm Min.
(XY Floating)



MDF7

3A, 250V
Flexible Board Distance:
2.54-15mm
Bottom Entry Type

FPC/FFC



FH12

0.5A, 50V,
Wide Variation



FH28

0.5A, 50V, Robust

Power

Board to Wire



DF33C

5A Max., 500V



DF63

15A Max., 630V

For more information about Hirose products: <http://www.hirose.com>

| | | | | | |
|-------------|--------------|------------------------|-------------------|------------------------|-------------------------|
| [Japan] | | TEL: +81-45-620-3491 | [Thailand] | (Bangkok) | TEL: +66-2-686-1255 |
| [China] | (Shanghai) | TEL: +86-21-6391-3355 | [USA] | (Chicago) (USA HQ) | TEL: +1-630-282-6700 |
| | (Beijing) | TEL: +86-10-5165-9332 | | (San Jose) | TEL: +1-408-253-9640 |
| | (Shenzhen) | TEL: +86-755-8207-0851 | | (Detroit) (Automotive) | TEL: +1-734-542-9963 |
| [Hong Kong] | (Kowloon) | TEL: +852-2803-5338 | | (Boston) | TEL: +1-978-662-5255 |
| [Taiwan] | (Taipei) | TEL: +886-2-2555-7377 | [The Netherlands] | (Amsterdam) | TEL: +31-20-6557460 |
| [Korea] | (Siheung) | TEL: +82-31-496-7000 | [Germany] | (Stuttgart) | TEL: +49-711-456002-221 |
| [Singapore] | (Anson Road) | TEL: +65-6324-6113 | | (Nuremberg) | TEL: +49-911-326889-63 |
| [India] | (Delhi) | TEL: +91-12-660-8018 | | (Hanover) | TEL: +49-511-978261-30 |
| | (Bangalore) | TEL: +91-80-4120-1907 | [France] | (Paris) | TEL: +33-1-85764886 |
| [Malaysia] | (Penang) | TEL: +604-648-5536 | [UK] | (Milton Keynes) | TEL: +44-1908-202050 |

*Specifications herein are subject to change without notice. Contact Hirose for the latest specifications, drawings, and availabilities.