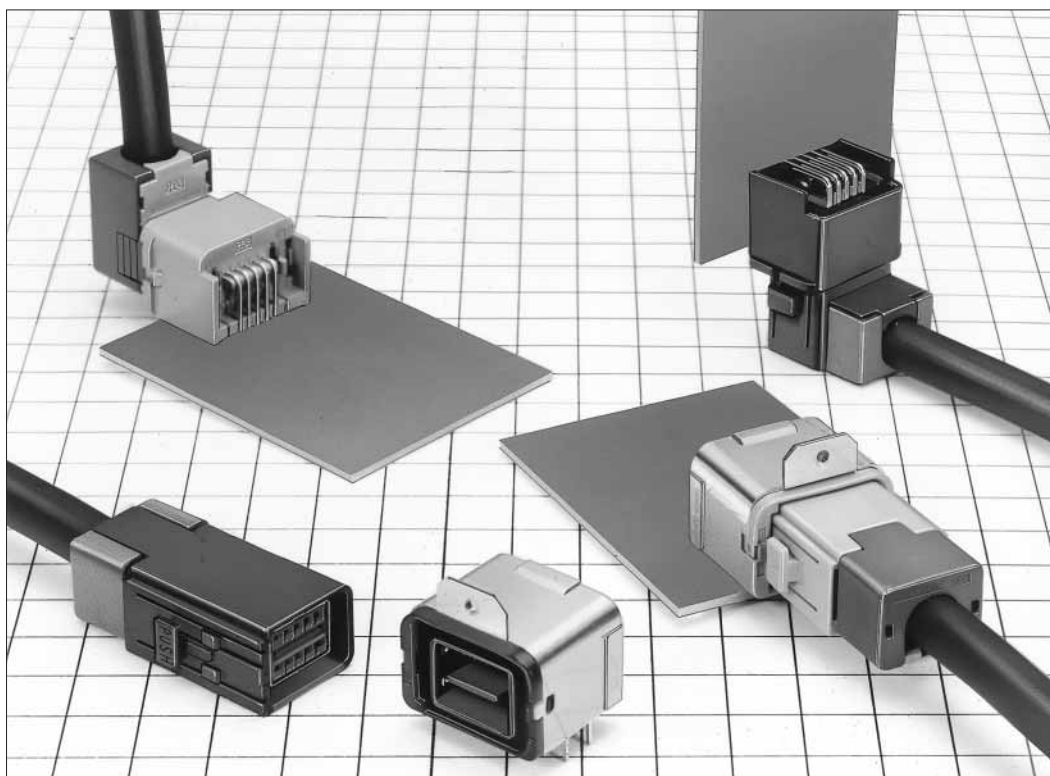


## Antenna, Sensor, and Communications Trunk Line Connections

# GT17 Series

— Ideal for high frequency Application —  
(as USB,LVDS,GVIF)



### Features

- All surface shielded construction.

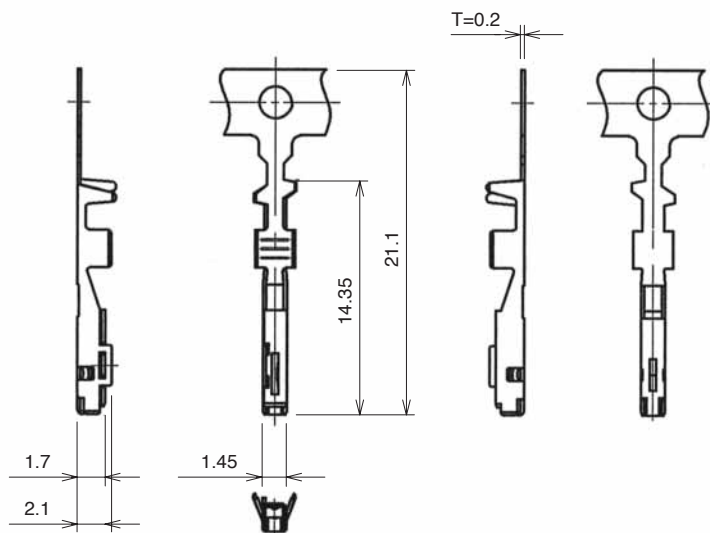
### Applications

In-car data communications, etc.

## GT17 Series

### F Connectors

#### Center Terminals (Used with 6, 8, and 10 conductor cable)

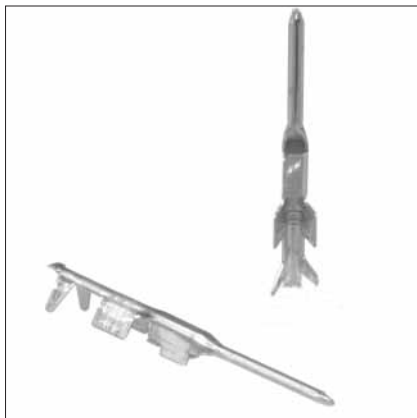


These are lead-free products.

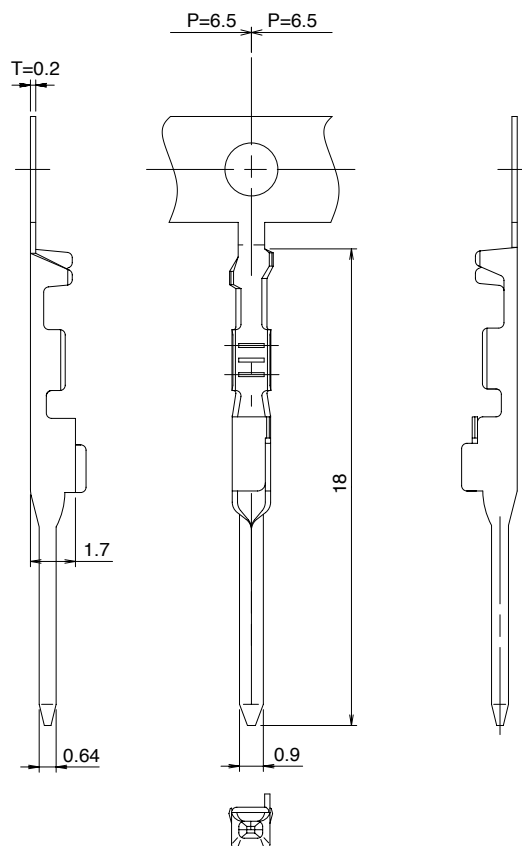
| Part Number   | CL No.     | Material     | Finish      | Conductor Size (AWG) | Outer Diameter | Packaging            | RoHS |
|---------------|------------|--------------|-------------|----------------------|----------------|----------------------|------|
| GT17-2022SCF  | 767-0009-0 | Copper alloy | Tin plating | #20 to 22            | 1.1 to 1.3 mm  | 10,000 pcs. per reel | YES  |
| GT17-2428SCF  | 767-0010-0 | Copper alloy | Tin plating | #24 to 28            | 0.7 to 1.0 mm  | 10,000 pcs. per reel |      |
| GT17-30SCF    | 767-0064-9 | Copper alloy | Tin plating | #30                  | 1.1 to 1.3 mm  | 10,000 pcs. per reel |      |
| GT17B-2428SCF | 767-0122-3 | Copper alloy | Tin plating | #24 to 28            | 0.5 to 0.7 mm  | 10,000 pcs. per reel |      |

### M Connectors

#### Center Terminals (Used with 6, 8, and 10 conductor cable)



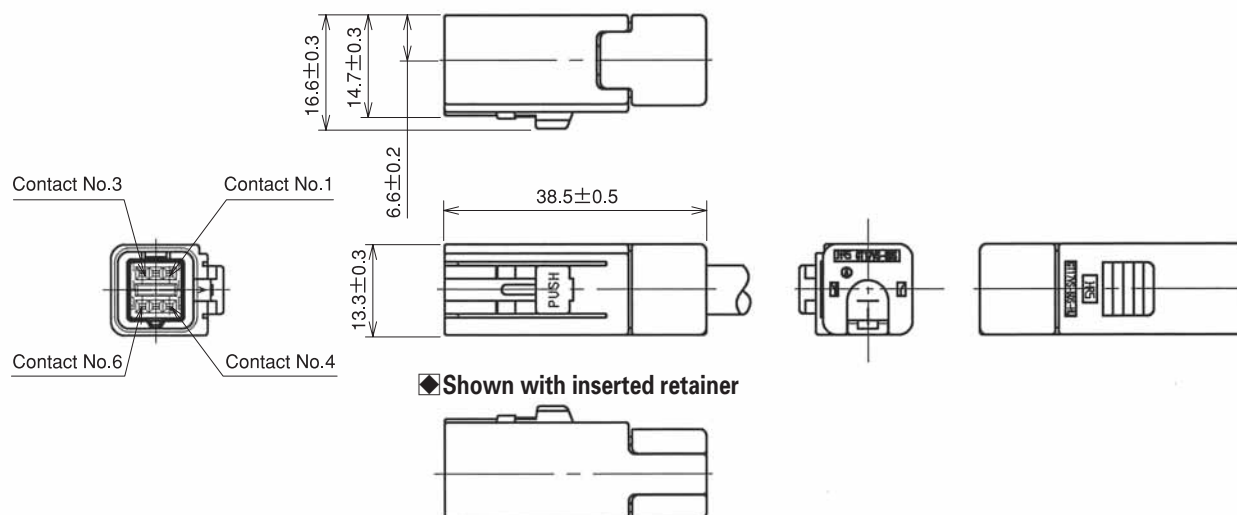
These are lead-free products.



| Part Number   | CL No.     | Material     | Finish      | Conductor Size (AWG) | Outer Diameter | Packaging            | RoHS |
|---------------|------------|--------------|-------------|----------------------|----------------|----------------------|------|
| GT17-2022PCF  | 767-0082-0 | Copper alloy | Tin plating | AWG#20~22            | 1.1 to 1.3 mm  | 10,000 pcs. per reel | YES  |
| GT17-2428PCF  | 767-0076-8 | Copper alloy | Tin plating | AWG#24~28            | 0.7 to 1.0 mm  | 10,000 pcs. per reel |      |
| GT17A-2428PCF | 767-0121-0 | Copper alloy | Tin plating | AWG#24~28            | 1.1 to 1.3 mm  | 10,000 pcs. per reel |      |

## 6-Conductor Straight Connectors

By using each of the two differently keyed types of housing for different purposes, incorrect insertion can be prevented.



The product comprises 6 parts.

(Housing, insulator, outer terminal, shield plate, retainer, and center terminal)

### Housing

| Part Number    | CL No.     | Material / Finish or Color | Packaging | RoHS |
|----------------|------------|----------------------------|-----------|------|
| GT17VS-6DS-HU  | 767-0051-7 | PBT/Light Gray             | 1         | YES  |
| GT17VSA-6DS-HU | 767-0052-0 | PBT/Black                  | 1         |      |

### Insulator

| Part Number  | CL No.     | Material / Finish or Color | Packaging | RoHS |
|--------------|------------|----------------------------|-----------|------|
| GT17V-6DS-2C | 767-0026-0 | PBT/Dark Gray              | 1         | YES  |

### Outer terminal

| Part Number    | CL No.     | Material / Finish or Color | Packaging | Remarks                     | RoHS |
|----------------|------------|----------------------------|-----------|-----------------------------|------|
| GT17VS-6DS-5CF | 767-0050-4 | Copper alloy / Tin plating | 1         | Conductor Size 4.8 to 5.2mm | YES  |

### Shield plate

| Part Number   | CL No.     | Material / Finish or Color | Packaging | RoHS |
|---------------|------------|----------------------------|-----------|------|
| GT17VS-6DS-SC | 767-0049-5 | Copper alloy / Tin plating | 1         | YES  |

### Retainer

| Part Number  | CL No.     | Material / Finish or Color | Packaging | RoHS |
|--------------|------------|----------------------------|-----------|------|
| GT17VS-6DS-R | 767-0053-2 | PBT/Dark Gray              | 1         | YES  |

### Center terminal

Used with 6, 8, and 10 conductor cable

## Mating Table

| Color | Cable side connector | Board connector   |
|-------|----------------------|-------------------|
| Gray  | GT17VS-6DS-HU        | GT17V-6DP-DS(70)  |
|       |                      | GT17VB-6DP-DS(70) |
| Black | GT17VSA-6DS-HU       | GT17VA-6DP-DS(70) |
|       |                      | GT17VC-6DP-DS(70) |

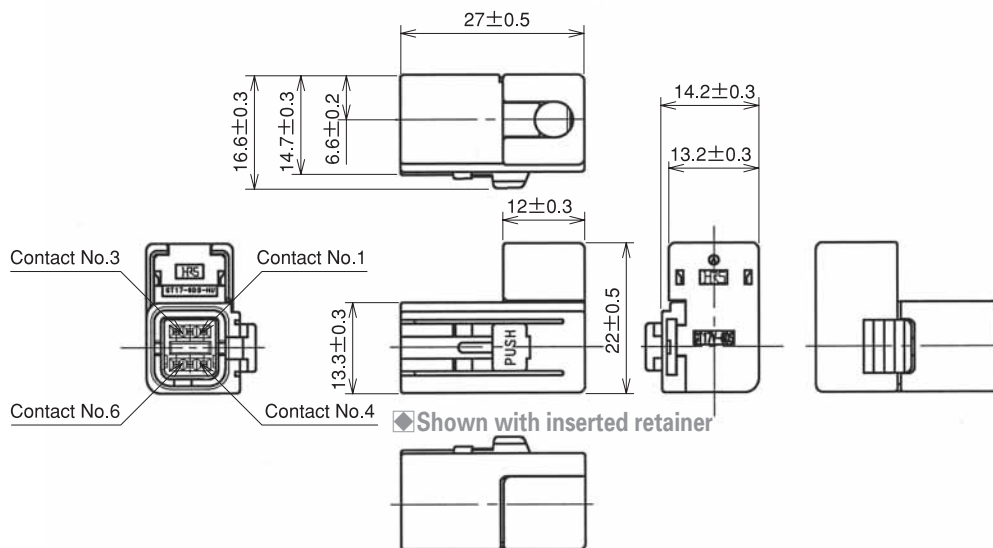
## GT17 Series

Coaxial cable connection of Antennas, Sensors, and Communication Trunk Lines

GT 5  
GT 13  
GT 16  
PO5G  
GT 11  
GT 14  
GT 17  
GT 19  
GT 3  
GT 6W  
GT 7  
GT 10  
GT 18W  
GT 15  
GT 8  
GT 9  
GT 25

### 6-Conductor Right-angle Connectors

By using each of the two differently keyed types of housing for different purposes, incorrect insertion can be prevented.



The product comprises 6 parts.

(Housing, insulator, outer terminal, shield plate, retainer, and center terminal)

#### Housing

| Part Number   | CL No.     | Material / Finish or Color | Packaging | RoHS |
|---------------|------------|----------------------------|-----------|------|
| GT17V-6DS-HU  | 767-0029-8 | PBT / Light Gray           | 1         | YES  |
| GT17VA-6DS-HU | 767-0030-7 | PBT / Black                | 1         |      |

#### Insulator

| Part Number  | CL No.     | Material / Finish or Color | Packaging | RoHS |
|--------------|------------|----------------------------|-----------|------|
| GT17V-6DS-2C | 767-0026-0 | PBT / Dark Gray            | 1         | YES  |

#### Outer terminal

| Part Number     | CL No.     | Material / Finish or Color | Packaging | Remarks                     | RoHS |
|-----------------|------------|----------------------------|-----------|-----------------------------|------|
| GT17V-6DS-5CF   | 767-0027-2 | Copper alloy / Tin plating | 1         | Conductor Size 4.8 to 5.2mm | YES  |
| GT17V-6DS-3.8CF | 767-0075-5 | Copper alloy / Tin plating | 1         | Conductor Size 3.8 to 4.2mm |      |

#### Shield plate

| Part Number  | CL No.     | Material / Finish or Color | Packaging | RoHS |
|--------------|------------|----------------------------|-----------|------|
| GT17V-6DS-SC | 767-0028-5 | Copper alloy / Tin plating | 1         | YES  |

#### Retainer

| Part Number | CL No.     | Material / Finish or Color | Packaging | RoHS |
|-------------|------------|----------------------------|-----------|------|
| GT17V-6DS-R | 767-0031-0 | PBT / Dark Gray            | 1         | YES  |

#### Center terminal

Used with 6, 8, and 10 conductor cable

### Mating Table

| Color | Cable side connector | Board connector   |
|-------|----------------------|---|
| Gray  | GT17V-6DS-HU         | GT17V-6DP-DS(70)(Cable exit direction, up side from mounting side)    |
|       |                      | GT17VB-6DP-DS(70)(Cable exit direction, down side from mounting side) |
| Black | GT17VA-6DS-HU        | GT17VA-6DP-DS(70)(Cable exit direction, up side from mounting side)   |
|       |                      | GT17VC-6DP-DS(70)(Cable exit direction, down side from mounting side) |

## 6-Conductor Printed Circuit Board Connectors

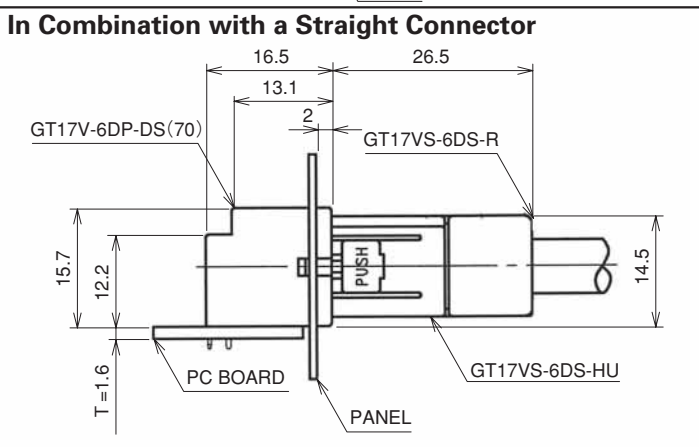
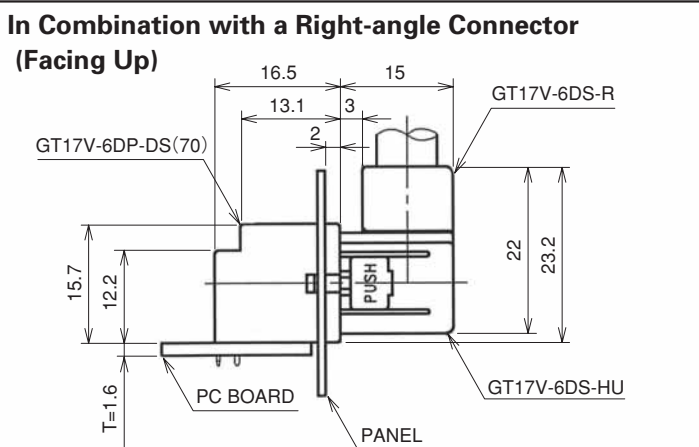
By using each of the two differently keyed types of housing for different purposes, incorrect insertion can be prevented.

● Cable extraction facing up

| Part Number      | CL No.        | Material / Finish or Color  | Packaging | RoHS |
|------------------|---------------|---|-----------|------|
| GT17V-6DP-DS(70) | 767-0024-4-70 | Housing: PBT/Light gray<br>Center terminal: Brass /Tin plating<br>Outer terminal: Copper alloy /Tin plating | 1         | YES  |

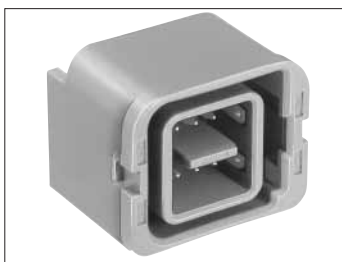


GT17V-6DP-DS(70)

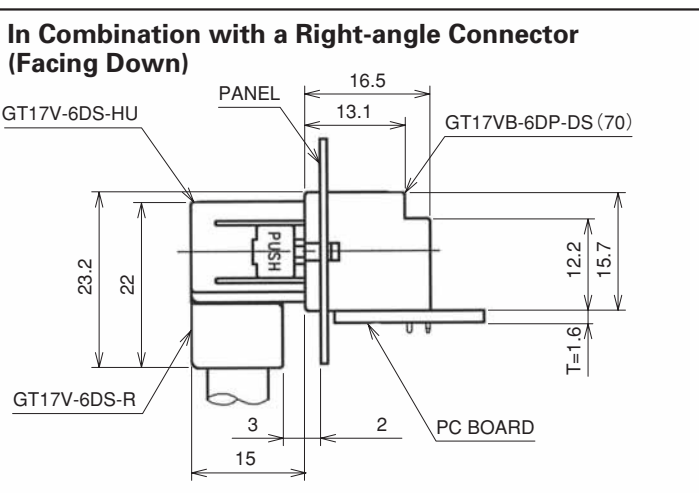


● Cable extraction facing down

| Part Number       | CL No.        | Material / Finish or Color  | Packaging | RoHS |
|-------------------|---------------|---|-----------|------|
| GT17VB-6DP-DS(70) | 767-0032-2-70 | Housing: PBT/Light gray<br>Center terminal: Brass /Tin plating<br>Outer terminal: Copper alloy /Tin plating | 1         | YES  |



GT17VB-6DP-DS(70)



## GT17 Series

### 6-Conductor Printed Circuit Board Connectors

By using each of the two differently keyed types of housing for different purposes, incorrect insertion can be prevented.

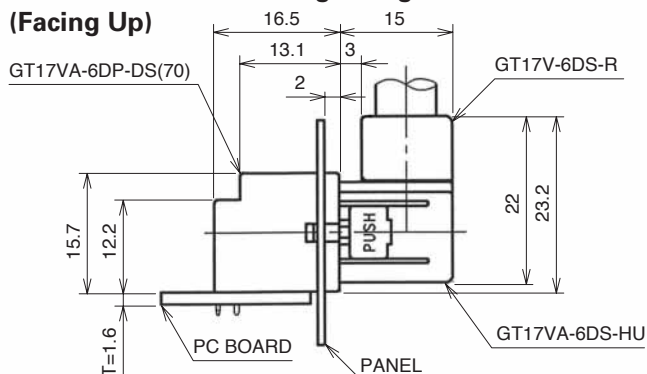
● Cable extraction facing up

| Part Number       | CL No.        | Material / Finish or Color   | Packaging | RoHS |
|-------------------|---------------|--|-----------|------|
| GT17VA-6DP-DS(70) | 767-0025-7-70 | Housing: PBT/Black<br>Center terminal: Brass /Tin plating<br>Outer terminal: Copper alloy /Tin plating | 1         | YES  |

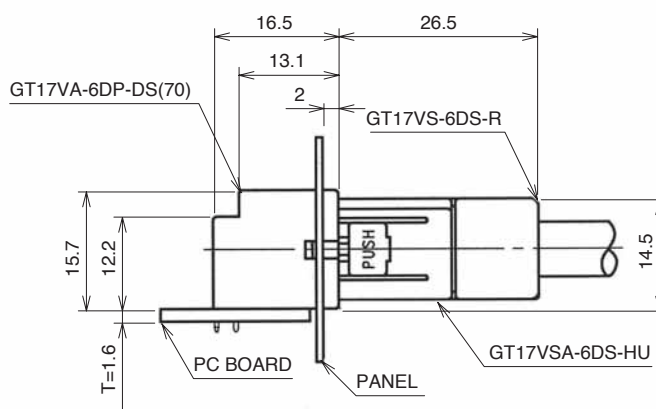


GT17VA-6DP-DS(70)

#### In Combination with a Right-angle Connector (Facing Up)



#### In Combination with a Straight Connector



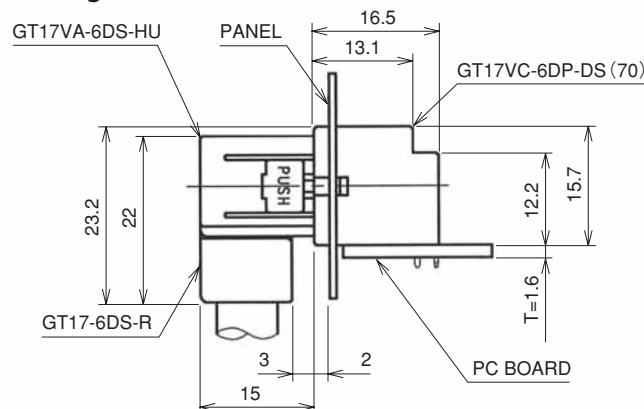
● Cable extraction facing down

| Part Number       | CL No.        | Material / Finish or Color   | Packaging | RoHS |
|-------------------|---------------|--|-----------|------|
| GT17VC-6DP-DS(70) | 767-0033-5-70 | Housing: PBT/Black<br>Center terminal: Brass /Tin plating<br>Outer terminal: Copper alloy /Tin plating | 1         | YES  |

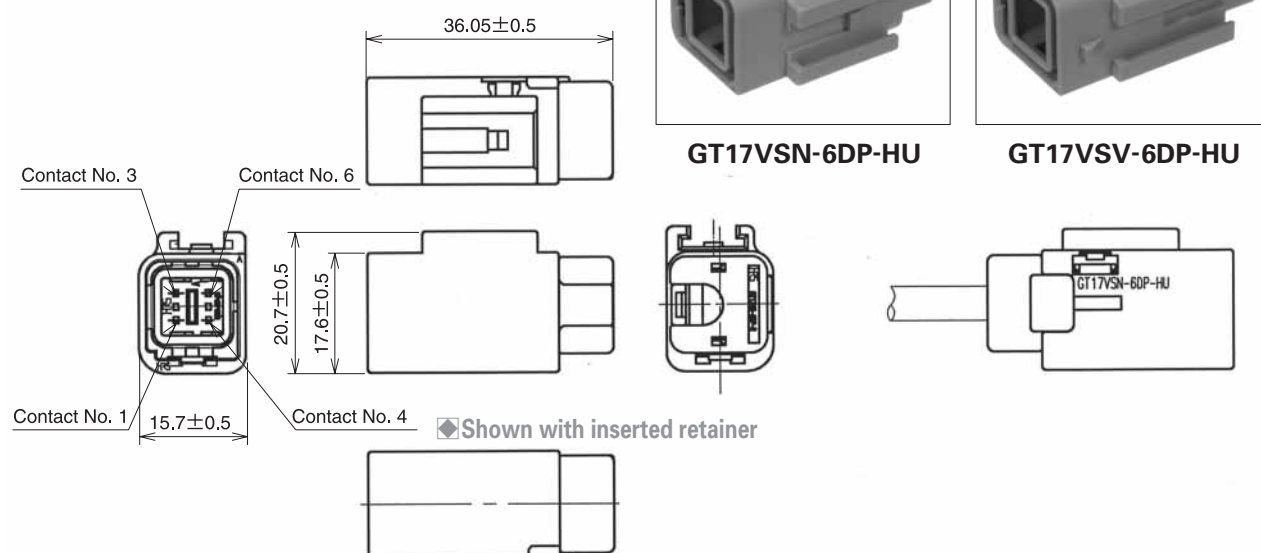


GT17VC-6DP-DS(70)

#### In Combination with a Right-angle Connector (Facing Down)



## 6-Conductor Inline Connectors



◆The product comprises 6 parts.

(Housing, insulator, outer terminal, shield plate, retainer, and center terminal)

### ●Housing

| Part Number    | CL No.     | Material / Finish or Color | Packaging | RoHS |
|----------------|------------|----------------------------|-----------|------|
| GT17VSN-6DP-HU | 767-0077-0 | PBT / Light Gray           | 1         | YES  |
| GT17VSV-6DP-HU | 767-0128-0 | PBT / Light Gray           | 1         |      |

### ●Insulator

| Part Number  | CL No.     | Material / Finish or Color | Packaging | RoHS |
|--------------|------------|----------------------------|-----------|------|
| GT17V-6DP-2C | 767-0078-3 | PBT / Dark Gray            | 1         | YES  |

### ●Outer terminal

| Part Number    | CL No.     | Material / Finish or Color | Packaging | Remarks                     | RoHS |
|----------------|------------|----------------------------|-----------|-----------------------------|------|
| GT17VS-6DP-5CF | 767-0080-5 | Copper alloy / Tin plating | 1         | Conductor Size 4.8 to 5.2mm | YES  |

### ●Shield plate

| Part Number   | CL No.     | Material / Finish or Color | Packaging | RoHS |
|---------------|------------|----------------------------|-----------|------|
| GT17VS-6DP-SC | 767-0079-6 | Copper alloy / Tin plating | 1         | YES  |

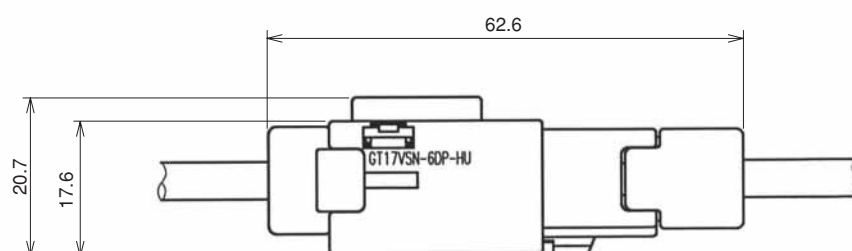
### ●Retainer

| Part Number  | CL No.     | Material / Finish or Color | Packaging | RoHS |
|--------------|------------|----------------------------|-----------|------|
| GT17VS-6DP-R | 767-0081-8 | PBT / Dark Gray            | 1         | YES  |

### ●Center terminal

Used with 6,8, and 10 conductor cable

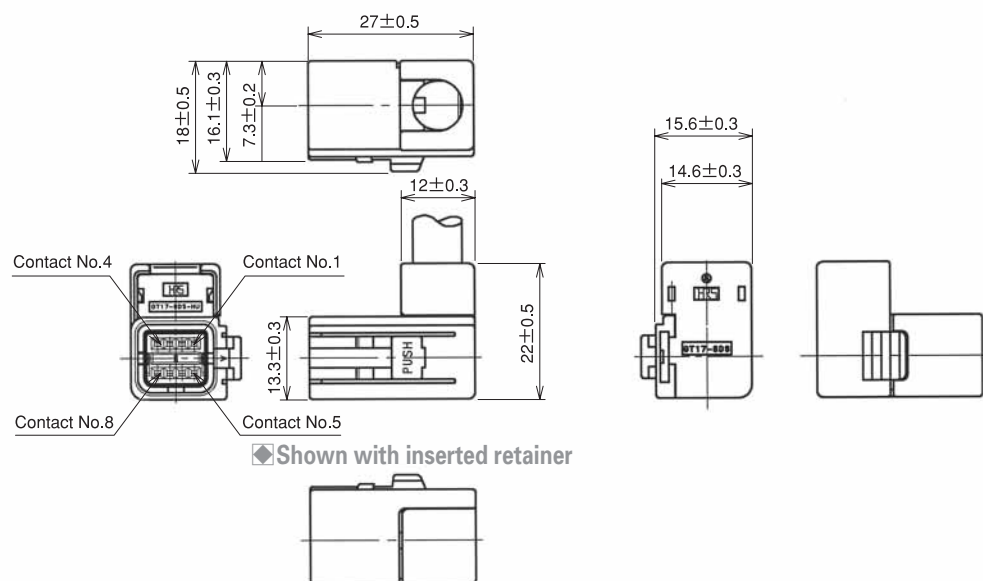
## GT17 6-Conductor Inline Connector Mounting Condition



## GT17 Series

### 8-Conductor Right-angle Connectors

By using each of the two differently keyed types of housing for different purposes, incorrect insertion can be prevented.



The product comprises 6 parts.

(Housing, insulator, outer terminal, shield plate, retainer, and center terminal)

#### Housing

| Part Number  | CL No.     | Material / Finish or Color | Packaging | RoHS |
|--------------|------------|----------------------------|-----------|------|
| GT17-8DS-HU  | 767-0003-4 | PBT / Light Gray           | 1         | YES  |
| GT17A-8DS-HU | 767-0004-7 | PBT / Black                | 1         |      |

#### Insulator

| Part Number | CL No.     | Material / Finish or Color | Packaging | RoHS |
|-------------|------------|----------------------------|-----------|------|
| GT17-8DS-2C | 767-0005-0 | PBT / Dark Gray            | 1         | YES  |

#### Outer terminal

| Part Number      | CL No.        | Material / Finish or Color    | Packaging | Remarks                     | RoHS |
|------------------|---------------|-------------------------------|-----------|-----------------------------|------|
| GT17-8DS-7CF(70) | 767-0007-5-70 | Phosphor bronze / Tin plating | 1         | Conductor Size 6.8 to 7.2mm | YES  |

#### Shield plate

| Part Number     | CL No.        | Material / Finish or Color | Packaging | RoHS |
|-----------------|---------------|----------------------------|-----------|------|
| GT17-8DS-SC(70) | 767-0006-2-70 | Copper alloy / Tin plating | 1         | YES  |

#### Retainer

| Part Number | CL No.     | Material / Finish or Color | Packaging | RoHS |
|-------------|------------|----------------------------|-----------|------|
| GT17-8DS-R  | 767-0008-8 | PBT / Dark Gray            | 1         | YES  |

#### Center terminal

Used with 6, 8, and 10 conductor cable

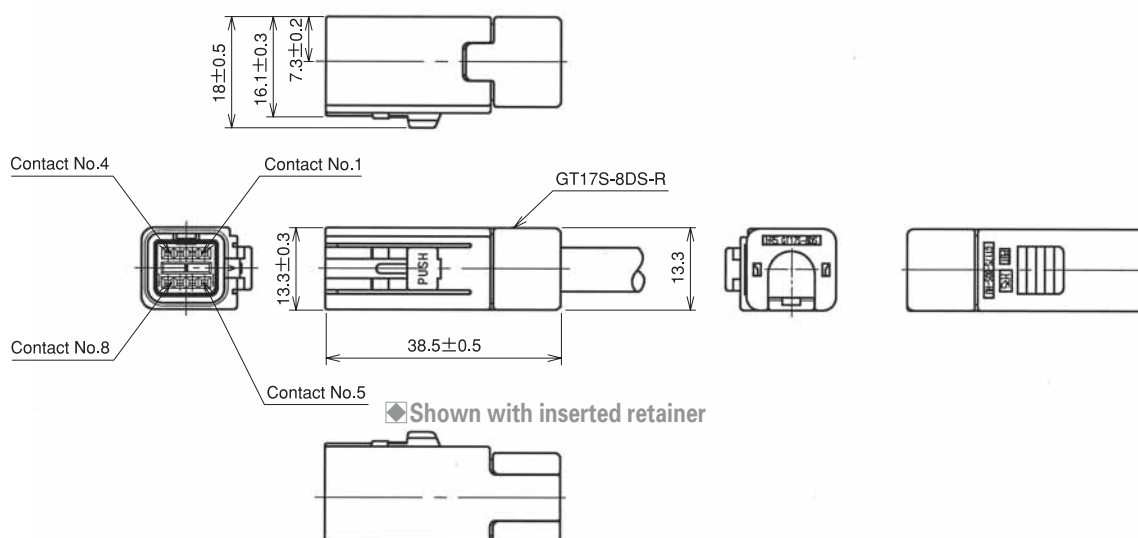
#### Mating Table

| Color | Cable side connector | Board connector   |
|-------|----------------------|---|
| Gray  | GT17-8DS-HU          | GT17V-8DP-DS(Cable exit direction, up side from mounting side)    |
|       |                      | GT17VB-8DP-DS(Cable exit direction, down side from mounting side) |
| Black | GT17A-8DS-HU         | GT17VA-8DP-DS(Cable exit direction, up side from mounting side)   |
|       |                      | GT17VC-8DP-DS(Cable exit direction, down side from mounting side) |



## 8-Conductor Straight Connectors

By using each of the two differently keyed types of housing for different purposes, incorrect insertion can be prevented.



The product comprises 6 parts.

(Housing, insulator, outer terminal, shield plate, retainer, and center terminal)

### Housing

| Part Number   | CL No.     | Material / Finish or Color | Packaging | RoHS |
|---------------|------------|----------------------------|-----------|------|
| GT17S-8DS-HU  | 767-0108-2 | PBT / Light Gray           | 1         | YES  |
| GT17SA-8DS-HU | 767-0109-5 | PBT / Black                | 1         |      |

### Insulator

| Part Number | CL No.     | Material / Finish or Color | Packaging | RoHS |
|-------------|------------|----------------------------|-----------|------|
| GT17-8DS-2C | 767-0005-0 | PBT / Dark Gray            | 1         | YES  |

### Outer terminal

| Part Number   | CL No.     | Material / Finish or Color | Packaging | Remarks                     | RoHS |
|---------------|------------|----------------------------|-----------|-----------------------------|------|
| GT17S-8DS-7CF | 767-0106-7 | Copper alloy / Tin plating | 1         | Conductor Size 6.8 to 7.2mm | YES  |

### Shield plate

| Part Number  | CL No.     | Material / Finish or Color | Packaging | RoHS |
|--------------|------------|----------------------------|-----------|------|
| GT17S-8DS-SC | 767-0107-0 | Copper alloy / Tin plating | 1         | YES  |

### Retainer

| Part Number | CL No.     | Material / Finish or Color | Packaging | RoHS |
|-------------|------------|----------------------------|-----------|------|
| GT17S-8DS-R | 767-0110-4 | PBT / Dark Gray            | 1         | YES  |

### Center terminal

Used with 6, 8, and 10 conductor cable

### Mating Table

| Color | Cable side connector | Board connector   |
|-------|----------------------|---|
| Gray  | GT17S-8DS-HU         | GT17V-8DP-DS(Cable exit direction, up side from mounting side)    |
|       |                      | GT17VB-8DP-DS(Cable exit direction, down side from mounting side) |
| Black | GT17SA-8DS-HU        | GT17VA-8DP-DS(Cable exit direction, up side from mounting side)   |
|       |                      | GT17VC-8DP-DS(Cable exit direction, down side from mounting side) |

## GT17 Series

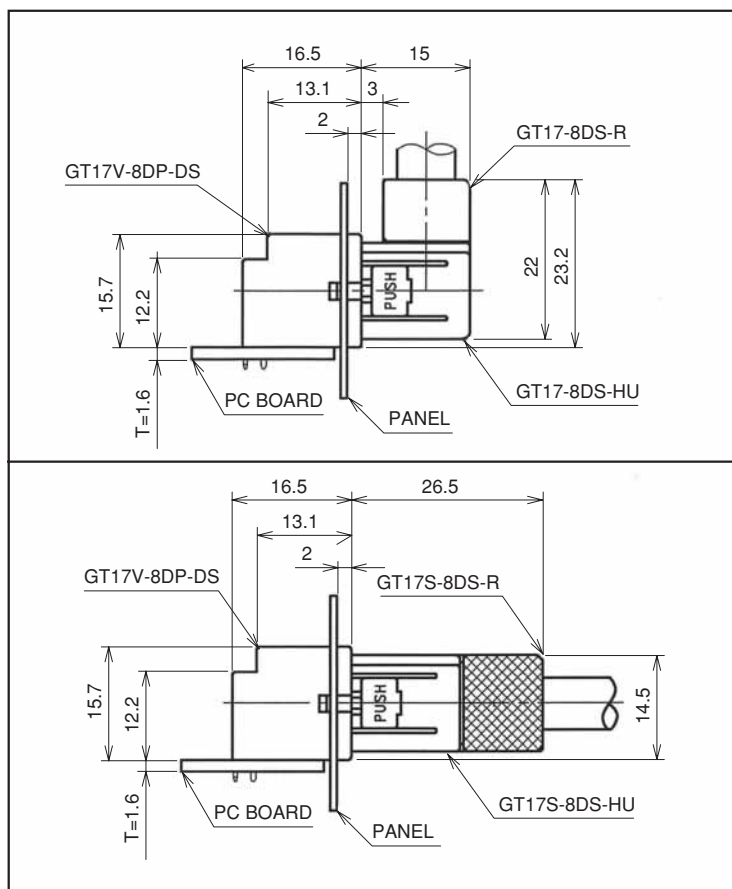
### 8-Conductor Printed Circuit Board Connectors

#### ● Cable extraction facing up

| Part Number  | CL No.     | Material / Finish or Color  | Packaging | RoHS |
|--------------|------------|---|-----------|------|
| GT17V-8DP-DS | 767-0139-6 | Housing: PBT/Light gray<br>Center terminal: Brass /Tin plating<br>Outer terminal: Copper alloy /Tin plating | 1         | YES  |



**GT17V-8DP-DS**



#### ● Cable extraction facing down

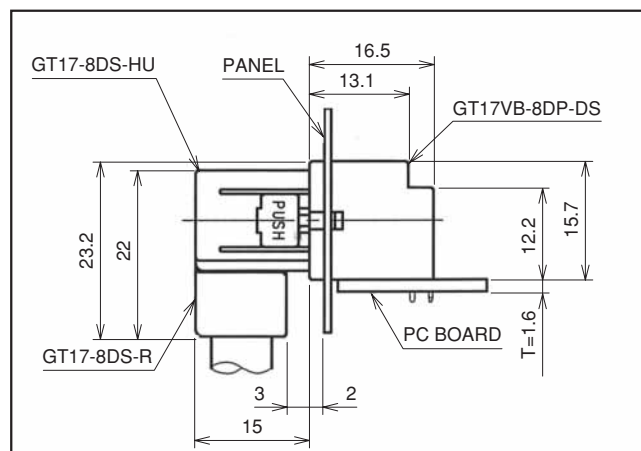
| Part Number      | CL No.     | Material / Finish or Color  | Packaging | RoHS |
|------------------|------------|---|-----------|------|
| GT17VB-8DP-DS    | 767-0185-3 | Housing: PBT/Light gray<br>Center terminal: Brass /Tin plating<br>Outer terminal: Copper alloy /Tin plating             | 1         | YES  |
| GT17VB-8DP-DS-SB | 767-0123-6 | Housing: PBT/Light gray<br>Center terminal/Shield case: Brass /Tin plating<br>Outer terminal: Copper alloy /Tin plating | 1         |      |



**GT17VB-8DP-DS**



**GT17VB-8DP-DS-SB**



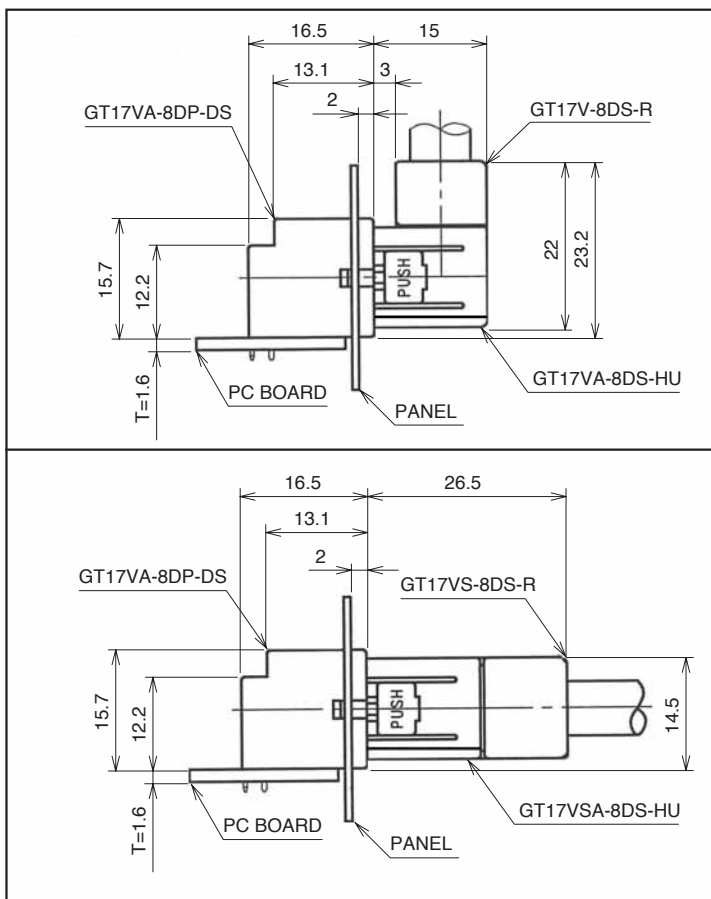
## 8-Conductor Printed Circuit Board Connectors

### ● Cable extraction facing up

| Part Number   | CL No.     | Material / Finish or Color   | Packaging | RoHS |
|---------------|------------|--|-----------|------|
| GT17VA-8DP-DS | 767-0200-5 | Housing: PBT/Black<br>Center terminal: Brass /Tin plating<br>Outer terminal: Copper alloy /Tin plating | 1         | YES  |



**GT17VA-8DP-DS**

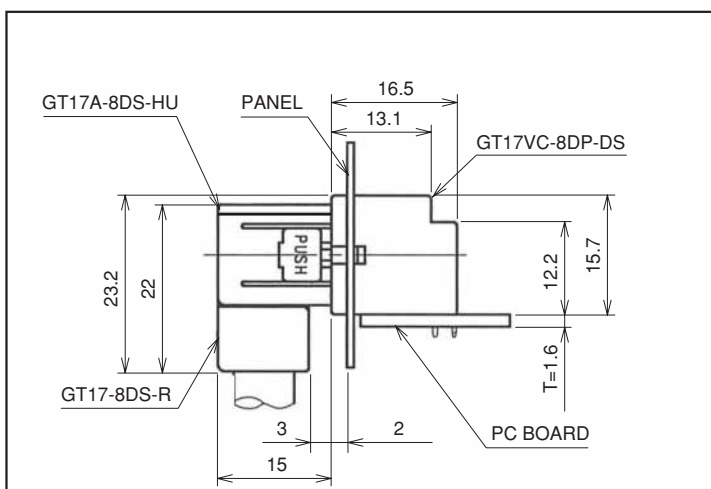


### ● Cable extraction facing down

| Part Number      | CL No.     | Material / Finish or Color   | Packaging | RoHS |
|------------------|------------|--|-----------|------|
| GT17VC-8DP-DS    | 767-0199-8 | Housing: PBT/Black<br>Center terminal: Brass /Tin plating<br>Outer terminal: Copper alloy /Tin plating             | 1         | YES  |
| GT17VC-8DP-DS-SB | 767-0124-9 | Housing: PBT/Black<br>Center terminal/Shield case: Brass /Tin plating<br>Outer terminal: Copper alloy /Tin plating | 1         |      |



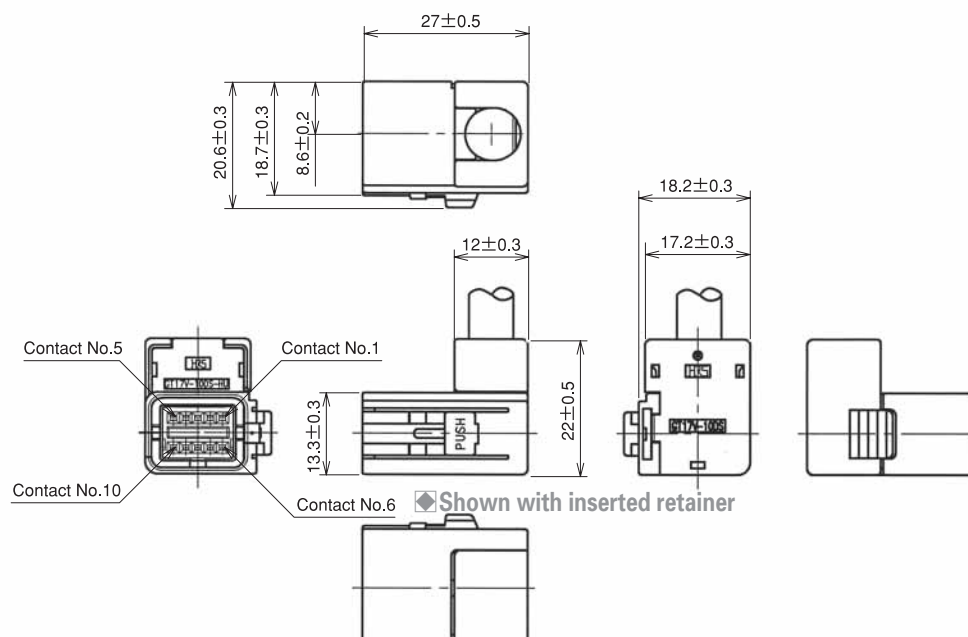
**GT17VC-8DP-DS**



## GT17 Series

### 10-Conductor Right-angle Connectors

By using each of the two differently keyed types of housing for different purposes, incorrect insertion can be prevented.



The product comprises 6 parts.

(Housing, insulator, outer terminal, shield plate, retainer, and center terminal)

#### Housing

| Part Number    | CL No.     | Material / Finish or Color | Packaging | RoHS |
|----------------|------------|----------------------------|-----------|------|
| GT17V-10DS-HU  | 767-0039-1 | PBT / Light Gray           | 1         | YES  |
| GT17VA-10DS-HU | 767-0040-0 | PBT / Black                | 1         |      |

#### Insulator

| Part Number   | CL No.     | Material / Finish or Color | Packaging | RoHS |
|---------------|------------|----------------------------|-----------|------|
| GT17V-10DS-2C | 767-0036-3 | PBT / Dark Gray            | 1         | YES  |

#### Outer terminal

| Part Number    | CL No.     | Material / Finish or Color | Packaging | Remarks                     | RoHS |
|----------------|------------|----------------------------|-----------|-----------------------------|------|
| GT17V-10DS-8CF | 767-0037-6 | Copper alloy / Tin plating | 1         | Conductor Size 7.5 to 8.0mm | YES  |

#### Shield plate

| Part Number   | CL No.     | Material / Finish or Color | Packaging | RoHS |
|---------------|------------|----------------------------|-----------|------|
| GT17V-10DS-SC | 767-0038-9 | Copper alloy / Tin plating | 1         | YES  |

#### Retainer

| Part Number  | CL No.     | Material / Finish or Color | Packaging | RoHS |
|--------------|------------|----------------------------|-----------|------|
| GT17V-10DS-R | 767-0041-3 | PBT / Dark Gray            | 1         | YES  |

#### Center terminal

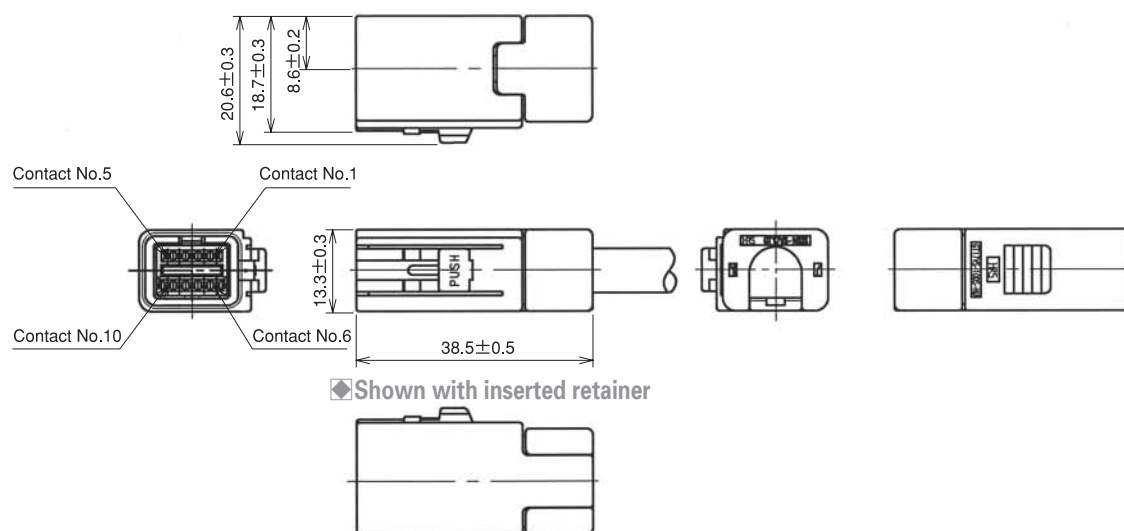
Used with 6,8, and 10 conductor cable

#### Mating Table

| Color | Cable side connector | Board connector   |
|-------|----------------------|---|
| Gray  | GT17V-10DS-HU        | GT17V-10DP-DS(70)(Cable exit direction, up side from mounting side)     |
|       |                      | GT17V-10DP-DSA(70)(straight DIP type)                                   |
|       |                      | GT17V-10DP-DS-SB(70)(Cable exit direction, up side from mounting side)  |
| Black | GT17VA-10DS-HU       | GT17VA-10DP-DS(70)(Cable exit direction, up side from mounting side)    |
|       |                      | GT17VA-10DP-DSA(70)(straight DIP type)                                  |
|       |                      | GT17VA-10DP-DS-SB(70)(Cable exit direction, up side from mounting side) |

## 10-Conductor Straight Connectors

By using each of the two differently keyed types of housing for different purposes, incorrect insertion can be prevented.



The product comprises 6 parts.

(Housing, insulator, outer terminal, shield plate, retainer, and center terminal)

### Housing

| Part Number     | CL No.     | Material / Finish or Color | Packaging | RoHS |
|-----------------|------------|----------------------------|-----------|------|
| GT17VS-10DS-HU  | 767-0061-0 | PBT / Light Gray           | 1         | YES  |
| GT17VSA-10DS-HU | 767-0062-3 | PBT / Black                | 1         |      |

### Insulator

| Part Number   | CL No.     | Material / Finish or Color | Packaging | RoHS |
|---------------|------------|----------------------------|-----------|------|
| GT17V-10DS-2C | 767-0036-3 | PBT / Dark Gray            | 1         | YES  |

### Outer terminal

| Part Number     | CL No.     | Material / Finish or Color | Packaging | Remarks                     | RoHS |
|-----------------|------------|----------------------------|-----------|-----------------------------|------|
| GT17VS-10DS-8CF | 767-0059-9 | Copper alloy / Tin plating | 1         | Conductor Size 7.5 to 8.0mm | YES  |

### Shield plate

| Part Number    | CL No.     | Material / Finish or Color | Packaging | RoHS |
|----------------|------------|----------------------------|-----------|------|
| GT17VS-10DS-SC | 767-0060-8 | Copper alloy / Tin plating | 1         | YES  |

### Retainer

| Part Number   | CL No.     | Material / Finish or Color | Packaging | RoHS |
|---------------|------------|----------------------------|-----------|------|
| GT17VS-10DS-R | 767-0063-6 | PBT / Dark Gray            | 1         | YES  |

### Center terminal

Used with 6,8, and 10 conductor cable

### Mating Table

| Color | Cable side connector | Board connector       |
|-------|----------------------|-----------------------|
| Gray  | GT17VS-10DS-HU       | GT17V-10DP-DS(70)     |
|       |                      | GT17V-10DP-DSA(70)    |
|       |                      | GT17V-10DP-DS-SB(70)  |
| Black | GT17VSA-10DS-HU      | GT17VA-10DP-DS(70)    |
|       |                      | GT17VA-10DP-DSA(70)   |
|       |                      | GT17VA-10DP-DS-SB(70) |

## GT17 Series

### 10-Conductor Printed Circuit Board Connectors

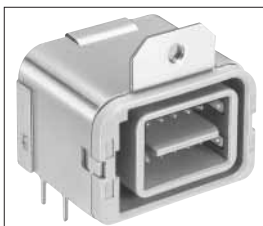
By using each of the two differently keyed types of housing for different purposes, incorrect insertion can be prevented.

#### Right-angle type

| Part Number          | CL No.        | Material / Finish or Color   | Packaging | Note                             | RoHS |
|----------------------|---------------|--|-----------|----------------------------------|------|
| GT17V-10DP-DS(70)    | 767-0034-8-70 | Housing: PBT/Light gray<br>Center terminal: Brass /Tin plating<br>Outer tube terminal: Copper alloy /Tin plating             | 1         | Products with enhanced shielding | YES  |
| GT17V-10DP-DS-SB(70) | 767-0069-2-70 | Housing: PBT/Light gray<br>Center terminal/Shield case: Brass /Tin plating<br>Outer tube terminal: Copper alloy /Tin plating | 1         |                                  |      |

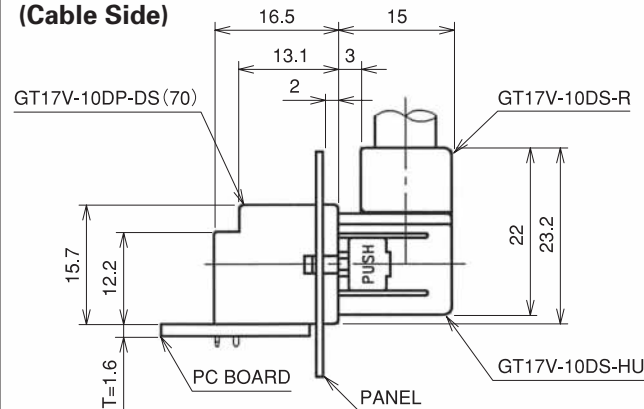


GT17V-10DP-DS(70)

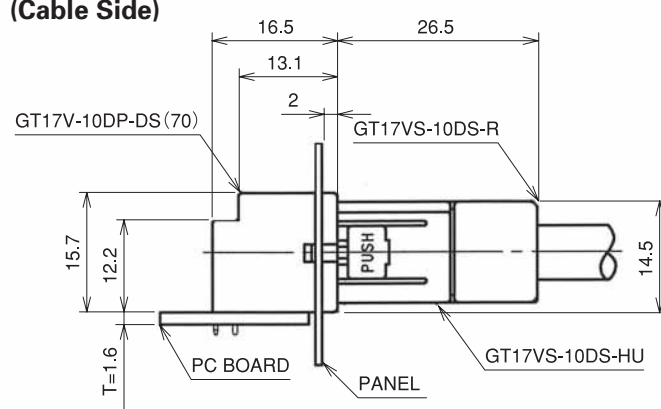


GT17V-10DP-DS-SB(70)

#### In Combination with a Right-angle Connector (Cable Side)

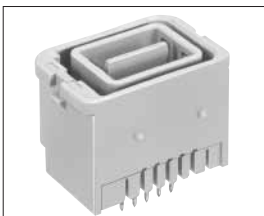


#### In Combination with a Straight Connector (Cable Side)



#### Straight-type

| Part Number        | CL No.        | Material / Finish or Color   | Packaging | RoHS |
|--------------------|---------------|--|-----------|------|
| GT17V-10DP-DSA(70) | 767-0067-7-70 | Housing: PBT/Black<br>Center terminal: Brass /Tin plating<br>Outer terminal: Copper alloy /Tin plating | 1         | YES  |
| GT17V-10DP-DSA-SB  | 767-0154-0    | Housing: PBT/Black<br>Center terminal: Brass /Tin plating<br>Outer terminal: Copper alloy /Tin plating | 1         |      |

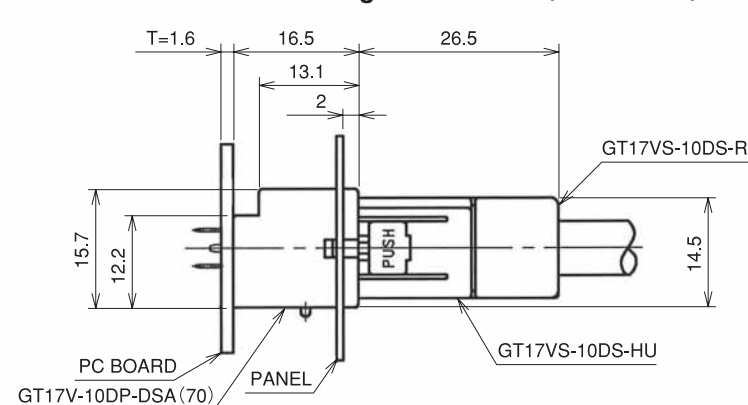


GT17V-10DP-DSA(70)



GT17V-10DP-DSA-SB

#### In Combination with a Straight Connector (Cable Side)



## 10-Conductor Printed Circuit Board Connectors

By using each of the two differently keyed types of housing for different purposes, incorrect insertion can be prevented.

### Right-angle type

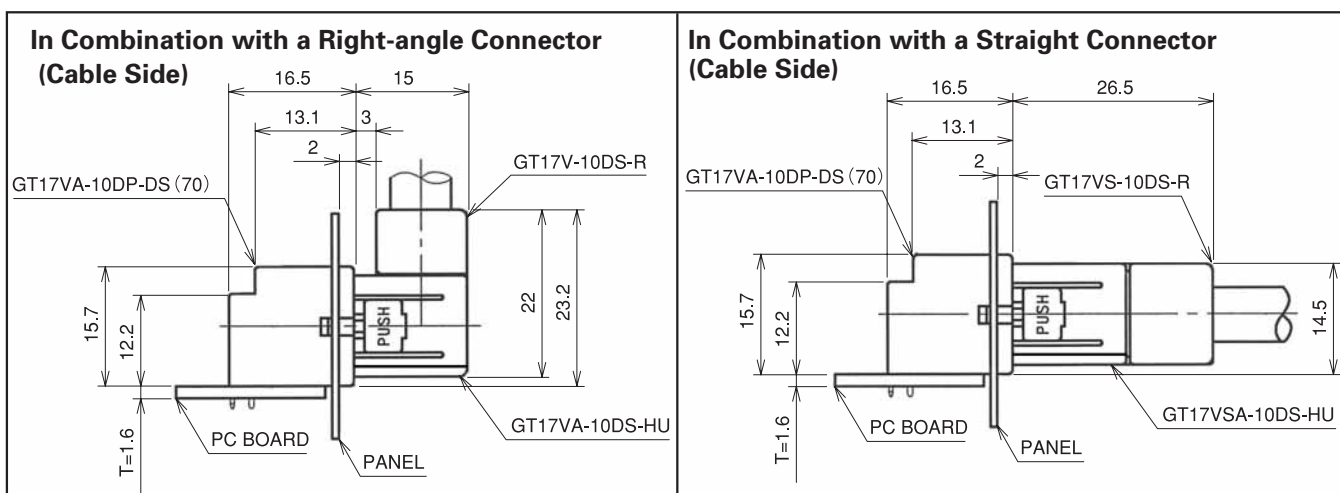
| Part Number           | CL No.        | Material / Finish or Color   | Packaging | Note                             | RoHS |
|-----------------------|---------------|--|-----------|----------------------------------|------|
| GT17VA-10DP-DS(70)    | 767-0035-0-70 | Housing: PBT/Black<br>Center terminal: Brass /Tin plating<br>Outer terminal: Copper alloy /Tin plating             | 1         | Products with enhanced shielding | YES  |
| GT17VA-10DP-DS-SB(70) | 767-0070-1-70 | Housing: PBT/Black<br>Center terminal/Shield case: Brass /Tin plating<br>Outer terminal: Copper alloy /Tin plating | 1         |                                  |      |



GT17VA-10DP-DS(70)

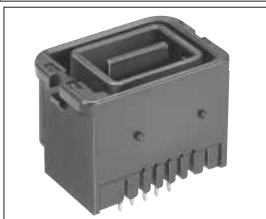


GT17VA-10DP-DS-SB(70)



### Straight-type

| Part Number        | CL No.        | Material / Finish or Color   | Packaging | RoHS |
|--------------------|---------------|--|-----------|------|
| GT17V-10DP-DSA(70) | 767-0068-0-70 | Housing: PBT/Black<br>Center terminal: Brass /Tin plating<br>Outer terminal: Copper alloy /Tin plating             | 1         | YES  |
| GT17V-10DP-DSA-SB  | 767-0174-7    | Housing: PBT/Black<br>Center terminal/Shield case: Brass /Tin plating<br>Outer terminal: Copper alloy /Tin plating | 1         |      |

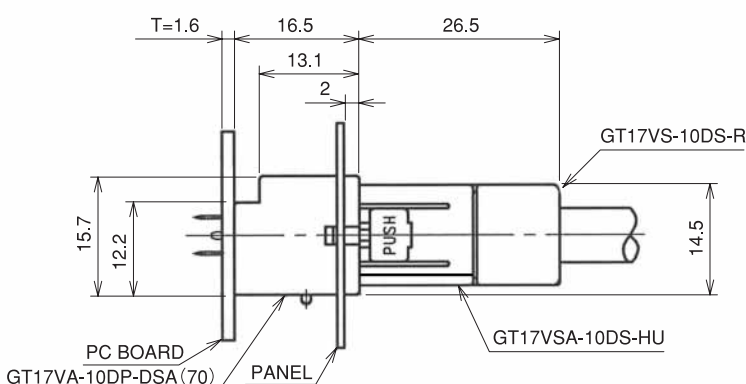


GT17VA-10DP-DSA(70)



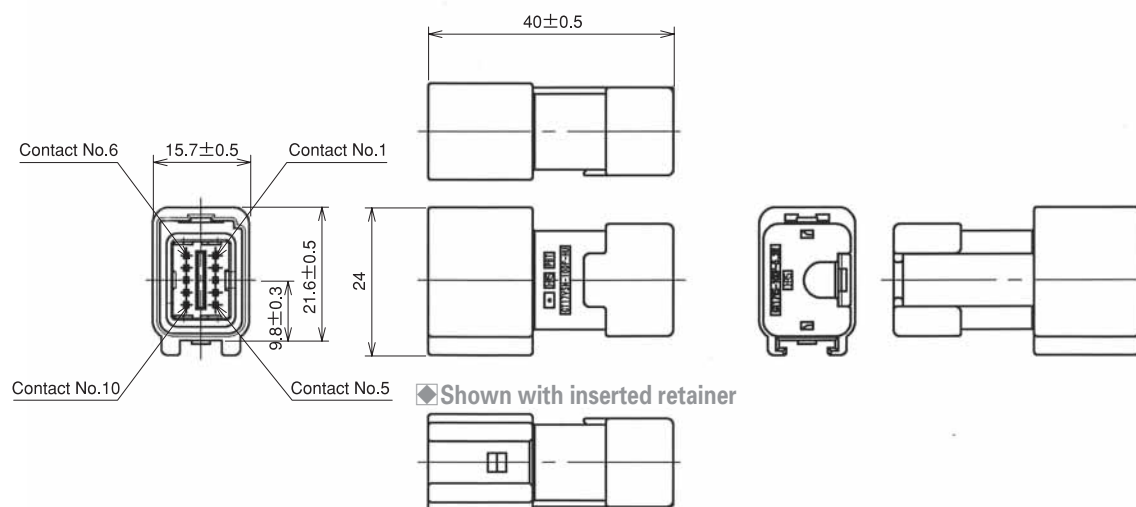
GT17VA-10DP-DSA-SB

### In Combination with a Straight Connector (Cable Side)



## GT17 Series

### 10-Conductor Inline Connectors



◆ The product comprises 6 parts.

(Housing, insulator case, outer terminal, shield plate, retainer, and center terminal)

#### ● Housing

| Part Number     | CL No.     | Material / Finish or Color | Packaging | RoHS |
|-----------------|------------|----------------------------|-----------|------|
| GT17VSN-10DP-HU | 767-0115-8 | PBT / Light Gray           | 1         | YES  |

#### ● Insulator

| Part Number   | CL No.     | Material / Finish or Color | Packaging | RoHS |
|---------------|------------|----------------------------|-----------|------|
| GT17V-10DP-2C | 767-0112-0 | PBT / Dark Gray            | 1         | YES  |

#### ● Outer terminal

| Part Number       | CL No.     | Material / Finish or Color | Packaging | Remarks          | RoHS |
|-------------------|------------|----------------------------|-----------|------------------|------|
| GT17VS-10DP-5.2CF | 767-0114-5 | Copper alloy / Tin plating | pack      | 1224pcs per pack | YES  |
| GT17VS-10DP-8CF   | 767-0130-1 | Copper alloy / Tin plating | pack      | 1224pcs per pack |      |

#### ● Shield plate

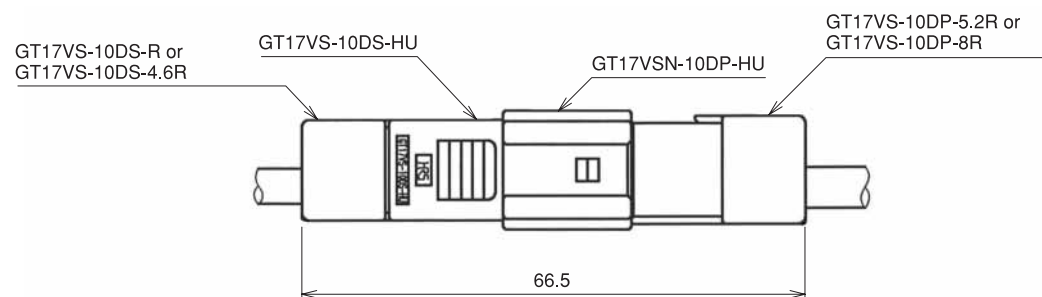
| Part Number    | CL No.     | Material / Finish or Color | Packaging | RoHS |
|----------------|------------|----------------------------|-----------|------|
| GT17VS-10DP-SC | 767-0113-2 | Copper alloy / Tin plating | 1         | YES  |

#### ● Retainer

| Part Number      | CL No.     | Material / Finish or Color | Packaging | RoHS |
|------------------|------------|----------------------------|-----------|------|
| GT17VS-10DP-5.2R | 767-0111-7 | PBT / Light Gray           | 1         | YES  |
| GT17VS-10DP-8R   | 767-0131-4 | PBT / Light Gray           | 1         |      |

#### ● Center terminal

Used with 6,8, and 10 conductor cable

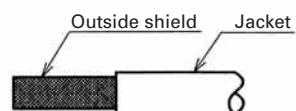


◆ Fully mated connector assemblies

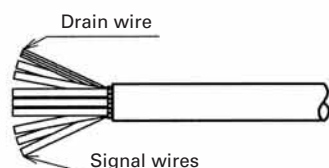


## ◆ Wiring Method

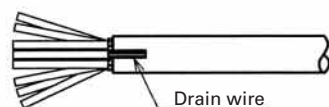
### ① Strip the Jacket.



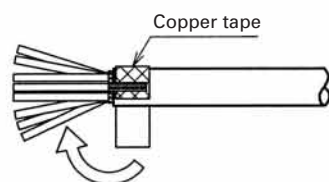
### ② Cut the shield and intermediate material to expose the wire and braid.



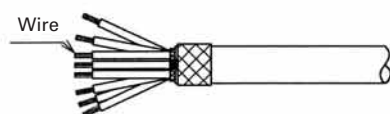
### ③ Bend back the drain wire over the Jacket.



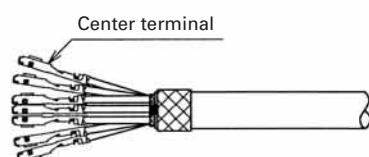
### ④ Wrap with copper tape.



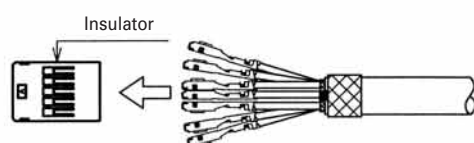
### ⑤ Strip the wire leads.



### ⑥ Crimp the center terminals.

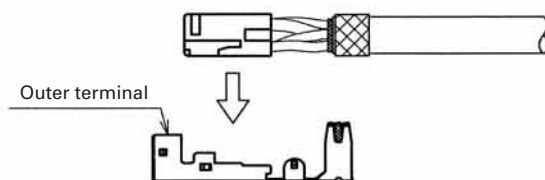


### ⑦ Insert the center terminals into the insulator.

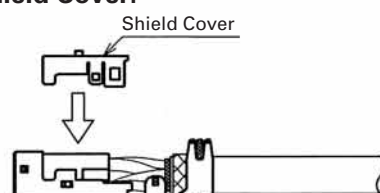


### GT17V-10DS-HU Harness Finish

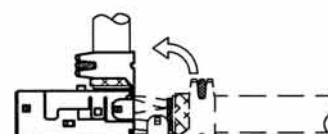
### ⑧ Insert the insulator into the Outer terminal.



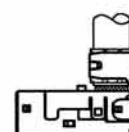
### ⑨ Insert the Shield Cover.



### ⑩ Fold back the Outer terminal.



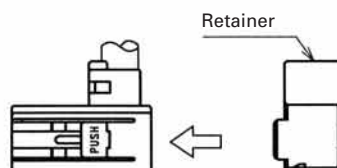
### ⑪ Crimp the Outer terminal.



### ⑫ Insert the Outer terminal into the housing.



### ⑬ Insert the retainer.



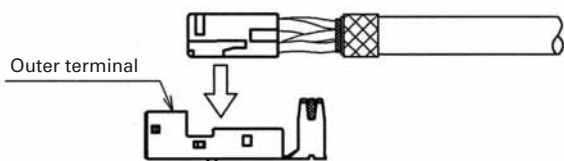
### ⑭ Completion



## GT17 Series

### GT17VS-10DS-HU Harness Finish

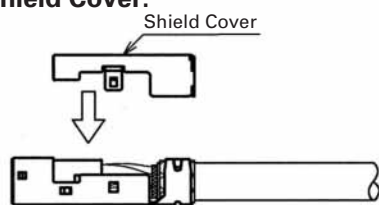
#### ⑧ Insert the insulator into the Outer terminal.



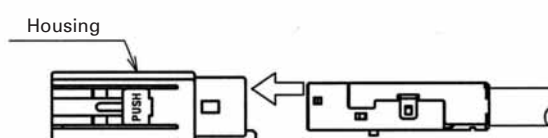
#### ⑨ Crimp the Outer terminal.



#### ⑩ Insert the Shield Cover.



#### ⑪ Insert the Outer terminal into the housing.



#### ⑫ Insert the retainer.



#### ⑬ Completion



## Termination Tools

User's manuals are available. Please ask your Hirose Electric account representative.

## Specifications

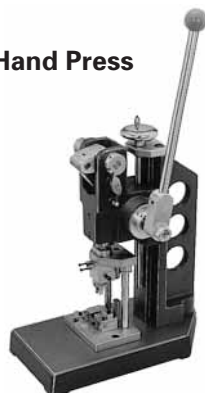
| Item              | Specification              | Remarks       |
|-------------------|----------------------------|---------------|
| Specification     | 1.5ton                     |               |
| Stroke Length     | 30mm                       |               |
| Number of strokes | 200spm (50Hz)              | 240spm (60Hz) |
| Weight            | 75kg                       |               |
| Motor             | 0.2kW                      | AC100V        |
| Crimping speed    | 2000 to 4000 pcs. per hour |               |

## Automatic Crimping Machine



Part Number CM-105

## Hand Press



## Harness Tools

| Product Number | HRS No.    | Applicator Product Number |
|----------------|------------|---------------------------|
| GT17-2022SCF   | 901-5083-5 | AP105-GT17-2022S          |
| GT17-2428SCF   | 901-5084-8 | AP105-GT17-2428S          |
| GT17-30SCF     | 901-5107-1 | AP105-GT17-30S            |

| Product Number    | HRS No.    | Type     | Applicator Product Number |
|-------------------|------------|----------|---------------------------|
| GT17H-4S-5CF      | 767-0087-4 | ANGLE    | GT17H-4S-5CF/CR-MP        |
| GT17HS-4S-5CF     | 767-0165-5 | STRAIGHT |                           |
| GT17V-6DS-3.8CF   | 767-0075-5 | ANGLE    | GT17V-6DS-3.8/CR-MP       |
| GT17V-6DS-5CF     | 767-0027-2 | ANGLE    | GT17VS-6DS-5/CR-MP        |
| GT17VS-6DS-5CF    | 767-0050-4 | STRAIGHT |                           |
| GT17VS-6DP-5CF    | 767-0080-5 | STRAIGHT | GT17VS-6DP-5/CR-MP        |
| GT17-8DS-7CF      | 767-0007-5 | ANGLE    | GT17S-8DS-7CR-MP          |
| GT17S-8DS-7CF     | 767-0106-7 | STRAIGHT |                           |
| GT17V-10DS-8CF    | 767-0037-6 | ANGLE    | GT17V-10DS/CR-MP          |
| GT17VS-10DS-8CF   | 767-0059-9 | STRAIGHT |                           |
| GT17VS-10DS-4.6CF | 767-0116-0 | STRAIGHT | GT17VS-10DS-4.6/CR-MP     |
| GT17VS-10DP-5.2CF | 767-0114-5 | STRAIGHT | GT17VS-10DP-5.2/CR-MP     |

\* Concerning the crimp height of terminals, crimp height settings have been prepared for each type of cable. Please contact a Hirose Electric account representative for further information.

Please note that new crimp height settings will be made for new cables and that this might take several days.

## 4-Conductor Right-angle Connectors



Key variation

|            |       |       |       |
|------------|-------|-------|-------|
|            |       |       |       |
| Standard   | Key A | Key B | Key C |
| Light gray | Brown | Green | Blue  |

◆The product comprises 5 parts.  
(Housing, insulator, outer terminal, retainer, center terminal)

### ● Housing

| Part Number | CL No.     | Material / Finish or Color | Packaging | RoHS |
|-------------|------------|----------------------------|-----------|------|
| GT17H-4S-HU | 767-0085-9 | PBT / Dark Gray            | 1         | YES  |

### ● Insulator

| Part Number    | CL No.     | Material / Finish or Color | Packaging | RoHS |
|----------------|------------|----------------------------|-----------|------|
| GT17H-4S-2C    | 767-0084-6 | PBT / Light Gray           | 1         | YES  |
| GT17H-4S-2C(A) | 767-0167-1 | PBT / Brown                | 1         |      |
| GT17H-4S-2C(B) | 767-0168-4 | PBT / Green                | 1         |      |
| GT17H-4S-2C(C) | 767-0169-7 | PBT /Blue                  | 1         |      |

### ● Outer terminal

| Part Number  | CL No.     | Material / Finish or Color | Packaging | RoHS |
|--------------|------------|----------------------------|-----------|------|
| GT17H-4S-5CF | 767-0027-2 | Copper alloy / Tin plating | 1         | YES  |

### ● Retainer

| Part Number | CL No.     | Material / Finish or Color | Packaging | RoHS |
|-------------|------------|----------------------------|-----------|------|
| GT17H-4S-R  | 767-0086-1 | PBT / Dark Gray            | 1         | YES  |

### ● Center terminal

| Part Number     | CL No.        | Material / Finish or Color    | Conductor Size(AWG) | Remarks             | RoHS |
|-----------------|---------------|-------------------------------|---------------------|---------------------|------|
| GT8-2428SCF(70) | 758-0001-8-70 | Phosphor Bronze / Tin plating | #24 to 28           | 10,000 pcs per reel | YES  |

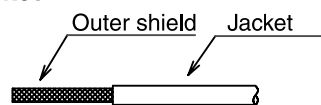
## ◆ Mating Table

| Color | Cable side connector     | Board connector |                 |                  |
|-------|--------------------------|-----------------|-----------------|------------------|
|       |                          | SMT Type        | DIP Type        |                  |
|       |                          |                 | Angle Type      | Straight Type    |
| Gray  | GT17H-4S-ASSY            | GT17H-4P-2H     | GT17H-4P-2DS    | GT17H-4P-2DSA    |
| Brown | GT17H-4S-ASSY(Key TypeA) | GT17H-4P-2H(A)  | GT17H-4P-2DS(A) | GT17H-4P-2DSA(A) |
| Green | GT17H-4S-ASSY(Key TypeB) | GT17H-4P-2H(B)  | GT17H-4P-2DS(B) | GT17H-4P-2DSA(B) |
| Blue  | GT17H-4S-ASSY(Key TypeC) | GT17H-4P-2H(C)  | GT17H-4P-2DS(C) | GT17H-4P-2DSA(C) |

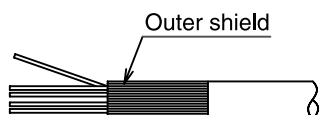
# GT17 Series

## Wiring Method (4-Conductor Right-angle Type)

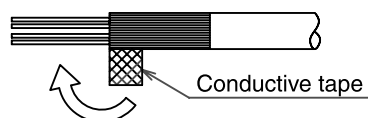
### ① Strip Jacket.



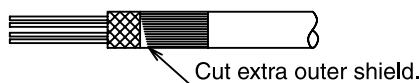
### ② Turn Outer shield to Backward.



### ③ Cover the cable by conductive tape.



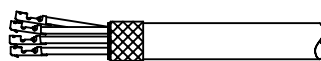
### ④ Cut extra outer shield.



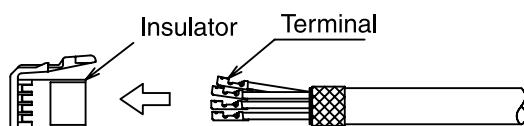
### ⑤ Strip Jacket.



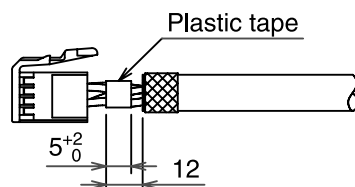
### ⑥ Crimp the terminal.



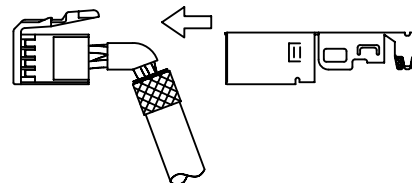
### ⑦ Insert terminal to the insulator.



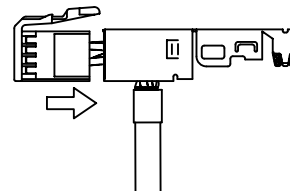
### ⑧ Cover middle of the cable by plastic tape.



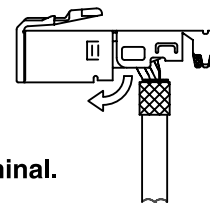
### ⑨ Insert insulator to the Outer tube terminal.



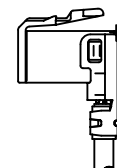
### ⑩



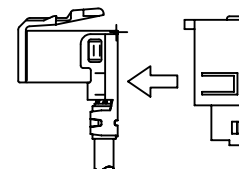
### ⑪ Bent the outer tube terminal 90.



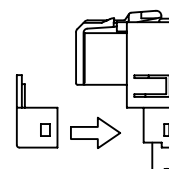
### ⑫ Crimp the outer tube terminal.



### ⑬ Insert the assembled outer tube terminal to the housing.



### ⑮ Set the Retainer.



## 4-Conductor Straight Connectors



Key variation

|            |       |       |       |
|------------|-------|-------|-------|
|            |       |       |       |
| Standard   | Key A | Key B | Key C |
| Light gray | Brown | Green | Blue  |

### ◆The product comprises 4 parts.

(Housing, insulator, outer terminal, center terminal)

#### ●Housing

| Part Number  | CL No.     | Material / Finish or Color | Packaging | RoHS |
|--------------|------------|----------------------------|-----------|------|
| GT17HS-4S-HU | 767-0133-0 | PBT / Dark Gray            | 1         | YES  |

#### ●Insulator

| Part Number    | CL No.     | Material / Finish or Color | Packaging | RoHS |
|----------------|------------|----------------------------|-----------|------|
| GT17H-4S-2C    | 767-0084-6 | PBT / Light Gray           | 1         | YES  |
| GT17H-4S-2C(A) | 767-0167-1 | PBT / Brown                | 1         |      |
| GT17H-4S-2C(B) | 767-0168-4 | PBT / Green                | 1         |      |
| GT17H-4S-2C(C) | 767-0169-7 | PBT /Blue                  | 1         |      |

#### ●Outer terminal

| Part Number   | CL No.     | Material / Finish or Color | Packaging | RoHS |
|---------------|------------|----------------------------|-----------|------|
| GT17HS-4S-5CF | 767-0135-5 | Copper alloy / Tin plating | 1         | YES  |

#### ●Center terminal

| Part Number     | CL No.        | Material / Finish or Color    | Conductor Size(AWG) | Remarks             | RoHS |
|-----------------|---------------|-------------------------------|---------------------|---------------------|------|
| GT8-2428SCF(70) | 758-0001-8-70 | Phosphor Bronze / Tin plating | #24 to 28           | 10,000 pcs per reel | YES  |

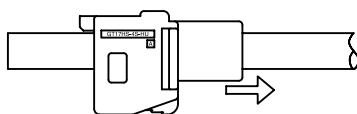
### ◆ Mating Table

| Color | Cable side connector     | Board connector |                 |                  |
|-------|--------------------------|-----------------|-----------------|------------------|
|       |                          | SMT Type        | DIP Type        |                  |
|       |                          |                 | Angle Type      | Straight Type    |
| Gray  | GT17H-4S-ASSY            | GT17H-4P-2H     | GT17H-4P-2DS    | GT17H-4P-2DSA    |
| Brown | GT17H-4S-ASSY(Key TypeA) | GT17H-4P-2H(A)  | GT17H-4P-2DS(A) | GT17H-4P-2DSA(A) |
| Green | GT17H-4S-ASSY(Key TypeB) | GT17H-4P-2H(B)  | GT17H-4P-2DS(B) | GT17H-4P-2DSA(B) |
| Blue  | GT17H-4S-ASSY(Key TypeC) | GT17H-4P-2H(C)  | GT17H-4P-2DS(C) | GT17H-4P-2DSA(C) |

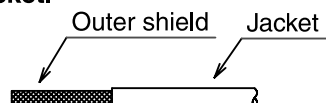
## GT17 Series

### ◆ Wiring Method (4-Conductor Straight Type)

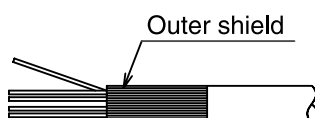
- ① Insert housing to the cable.



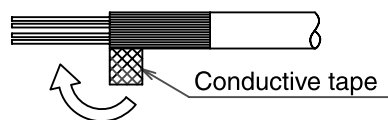
- ② Strip Jacket.



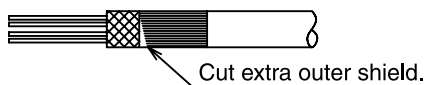
- ③ Turn Outer shield to backward.



- ④ Cover the cable by conductive tape.



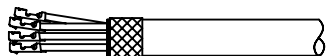
- ⑤ Cut extra outer shield.



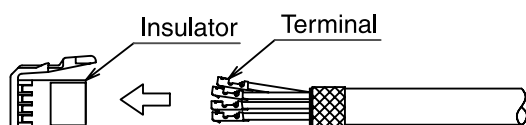
- ⑥ Strip Jacket.



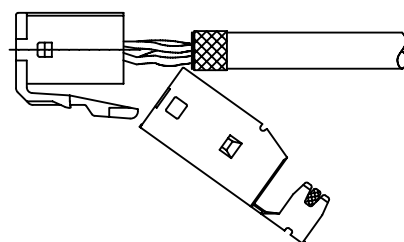
- ⑦ Crimp the terminal.



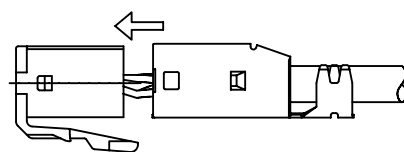
- ⑧ Insert terminal to the Insulator.



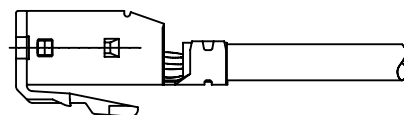
- ⑨ Set outer tube terminal to the insulator.



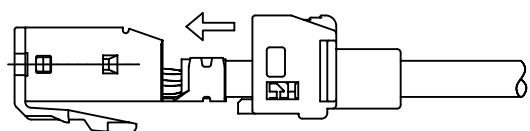
- ⑩ Set outer tube terminal to the insulator.



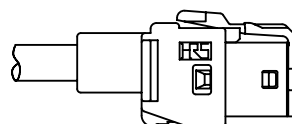
- ⑪ Crimp outertube terminal.



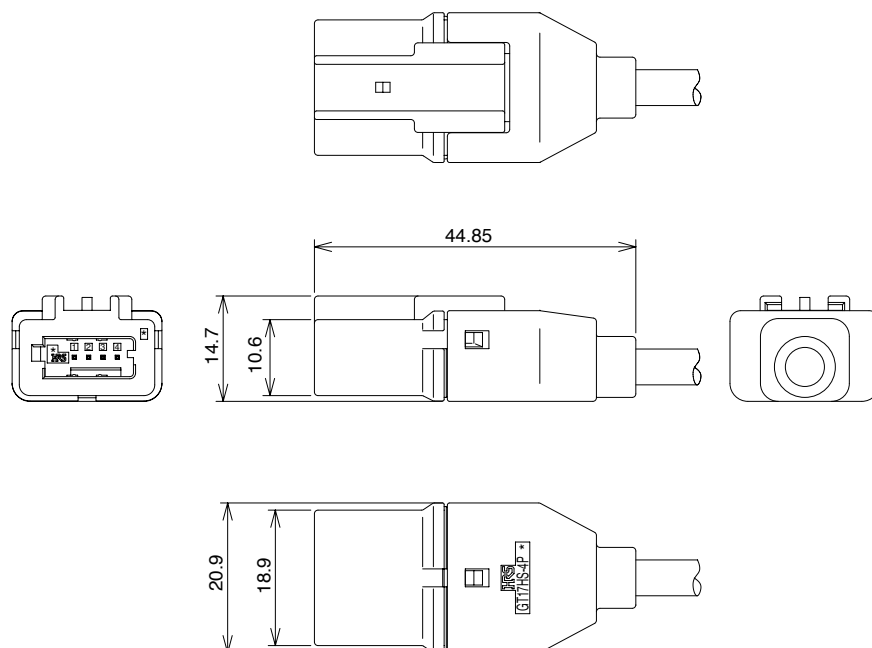
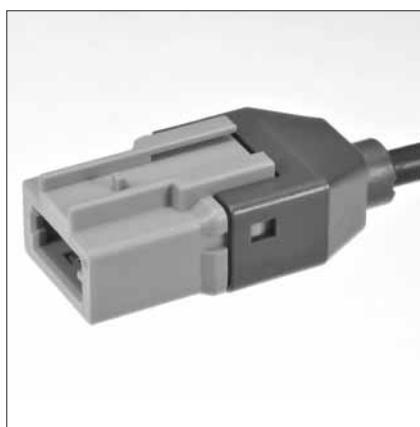
- ⑫ Slide up housing to outer tube terminal.



- ⑬ Finish.



## 4-Conductor Inline Connectors



### ◆The product comprises 6 parts.

(Housing, insulator, outer terminal, shield plate, retainer, and center terminal)

#### ● Housing

| Part Number   | CL No.     | Material / Finish or Color | Packaging | RoHS |
|---------------|------------|----------------------------|-----------|------|
| GT17HSP-4P-HU | 767-0158-0 | PBT / Light Gray           | 1         | YES  |

#### ● Insulator

| Part Number  | CL No.     | Material / Finish or Color | Packaging | RoHS |
|--------------|------------|----------------------------|-----------|------|
| GT17HS-4P-2C | 767-0155-2 | PBT / Light Gray           | 1         | YES  |

#### ● Outer terminal

| Part Number   | CL No.     | Material / Finish or Color | Packaging | Remarks         | RoHS |
|---------------|------------|----------------------------|-----------|-----------------|------|
| GT17HS-4P-5CF | 767-0156-5 | Copper alloy / Tin plating | reel      | 800pcs per reel | YES  |

#### ● Shield plate

| Part Number  | CL No.     | Material / Finish or Color | Packaging | RoHS |
|--------------|------------|----------------------------|-----------|------|
| GT17HS-4P-SC | 767-0157-8 | Copper alloy / Tin plating | 1         | YES  |

#### ● Retainer

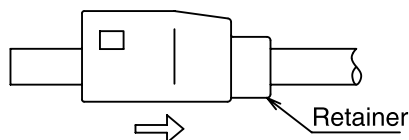
| Part Number | CL No.     | Material / Finish or Color | Packaging | RoHS |
|-------------|------------|----------------------------|-----------|------|
| GT17HS-4P-R | 767-0159-3 | PBT / Dark Gray            | 1         | YES  |

#### ● Center terminal

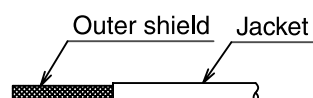
| Part Number  | CL No.     | Material / Finish or Color    | Conductor Size(AWG) | Remarks             | RoHS |
|--------------|------------|-------------------------------|---------------------|---------------------|------|
| GT8E-2428PCF | 758-0067-6 | Phosphor Bronze / Tin plating | #24 to 28           | 10,000 pcs per reel | YES  |

## ◆ Wiring Method (4-Conductor Right-angle Type)

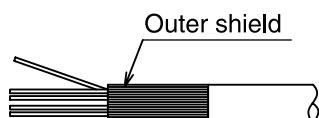
- ① Insert retainer to the cable.



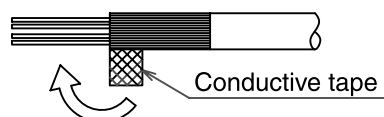
- ② Strip Jacket.



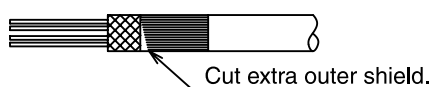
- ③ Turn Outer shield to backward.



- ④ Cover the cable by conductive tape.



- ⑤ Cut extra outer shield.



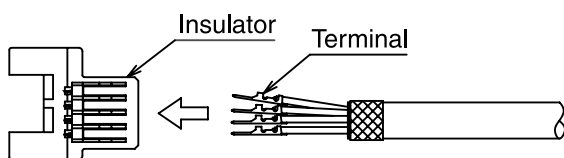
- ⑥ Strip Jacket.



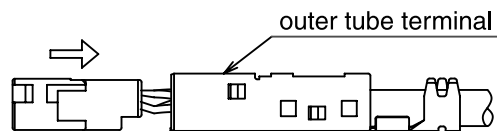
- ⑦ Crimp the terminal.



- ⑧ Insert terminal to the Insulator.



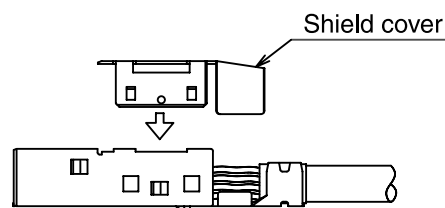
- ⑨ Set the insulator to the outer tube terminal.



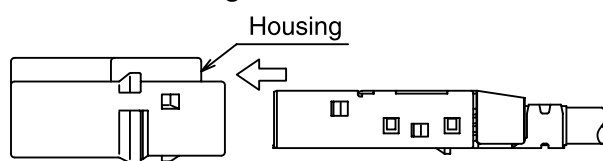
- ⑩ Crimp the outertube terminal.



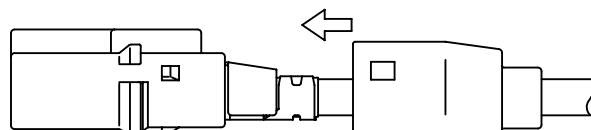
- ⑪ Set the shield cover to the outer tube terminal.



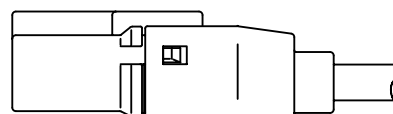
- ⑫ Insert the outer tube terminal to the housing.



- ⑬ Slide up the retainer to the housing.



- ⑭ Finish





## 4-Conductor Right-angle Connectors



Key variation

|       |       |       |
|-------|-------|-------|
|       |       |       |
| Key A | Key B | Key C |
| Brown | Green | Blue  |

### ◆The product comprises 5 parts.

(Housing, insulator, outer terminal, retainer, center terminal)

#### ● Housing

| Part Number   | CL No.     | Material / Finish or Color | Packaging | RoHS |
|---------------|------------|----------------------------|-----------|------|
| GT17HN-4DS-HU | 767-0141-8 | PBT / Dark Gray            | 1         | YES  |

#### ● Insulator

| Part Number      | CL No.     | Material / Finish or Color | Packaging | RoHS |
|------------------|------------|----------------------------|-----------|------|
| GT17HN-4DS-2C(A) | 767-0140-5 | PBT / Brown                | 1         | YES  |
| GT17HN-4DS-2C(B) | 767-0147-4 | PBT / Green                | 1         |      |
| GT17HN-4DS-2C(C) | 767-0148-7 | PBT / Blue                 | 1         |      |

#### ● Outer terminal

| Part Number    | CL No.     | Material / Finish or Color | Packaging | RoHS |
|----------------|------------|----------------------------|-----------|------|
| GT17HN-4DS-5CF | 767-0142-0 | Copper alloy / Tin plating | 1         | YES  |

#### ● Retainer

| Part Number  | CL No.     | Material / Finish or Color | Packaging | RoHS |
|--------------|------------|----------------------------|-----------|------|
| GT17HN-4DS-R | 767-0143-3 | PBT / Dark Gray            | 1         | YES  |

#### ● Center terminal

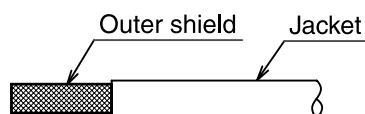
| Part Number     | CL No.        | Material / Finish or Color    | Conductor Size(AWG) | Remarks             | RoHS |
|-----------------|---------------|-------------------------------|---------------------|---------------------|------|
| GT8-2428SCF(70) | 758-0001-8-70 | Phosphor Bronze / Tin plating | #24 to 28           | 10,000 pcs per reel | YES  |

### ◆ Mating Table

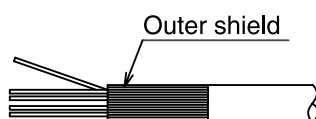
| Color | Cable side connector       | Board connector                         |                 |
|-------|----------------------------|---|-----------------|
|       |                            | Angle Type                              | Straight Type   |
| Brown | GT17HN-4DS-ASSY(Key TypeA) | GT17HN-4DP-2H(A)                        | GT17HJ-4DP-2DSA |
| Green | GT17HN-4DS-ASSY(Key TypeB) | GT17HN-4DP-2H(B)<br>GT17HN-4/4DP-2H(BC) |                 |
| Blue  | GT17HN-4DS-ASSY(Key TypeC) | GT17HN-4DP-2H(C)                        |                 |
|       |                            | GT17HN-4/4DP-2H(BC)                     |                 |

## ◆ Wiring Method (4-Conductor Right-angle Type)

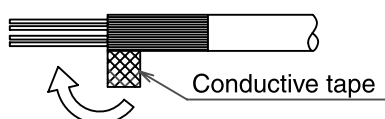
### ① Strip Jacket.



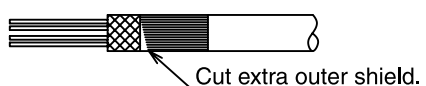
### ② Turn Outer shield to backward.



### ③ Cover the cable by conductive tape.



### ④ Cut extra outer shield.



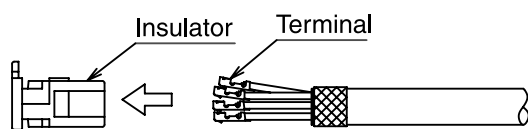
### ⑤ Strip Jacket.



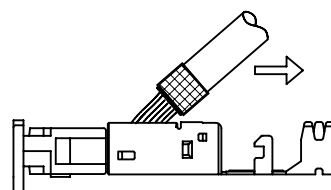
### ⑥ Crimp the terminal.



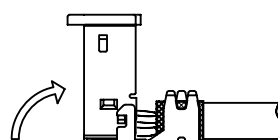
### ⑦ Insert terminal to the Insulator.



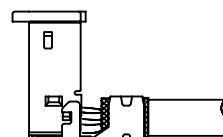
### ⑧ Insert insulator to the Outer tube terminal.



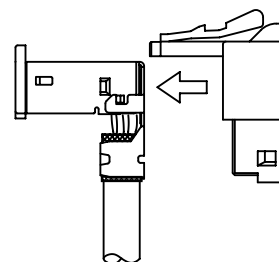
### ⑨ Bent the outer tube terminal 90.



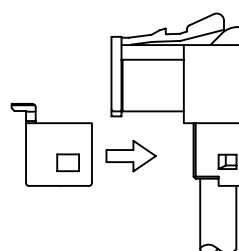
### ⑩ Crimp the outer tube terminal.



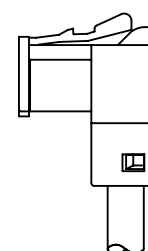
### ⑪ Insert the assembled outer tube terminal to the housing.



### ⑫ Set the Retainer.



### ⑬ Finish.



## 4-Conductor Straight Connectors



Key variation

|       |       |       |
|-------|-------|-------|
|       |       |       |
| Key A | Key B | Key C |
| Brown | Green | Blue  |

◆The product comprises 4 parts.  
(Housing, insulator, outer terminal, center terminal)

●Housing

| Part Number    | CL No.     | Material / Finish or Color | Packaging | RoHS |
|----------------|------------|----------------------------|-----------|------|
| GT17HNS-4DS-HU | 767-0150-9 | PBT / Dark Gray            | 1         | YES  |

●Insulator

| Part Number      | CL No.     | Material / Finish or Color | Packaging | RoHS |
|------------------|------------|----------------------------|-----------|------|
| GT17HN-4DS-2C(A) | 767-0140-5 | PBT / Brown                | 1         | YES  |
| GT17HN-4DS-2C(B) | 767-0147-4 | PBT / Green                | 1         |      |
| GT17HN-4DS-2C(C) | 767-0148-7 | PBT /Blue                  | 1         |      |

●Outer terminal

| Part Number     | CL No.     | Material / Finish or Color | Packaging | RoHS |
|-----------------|------------|----------------------------|-----------|------|
| GT17HNS-4DS-5CF | 767-0151-1 | Copper alloy / Tin plating | 1         | YES  |

●Center terminal

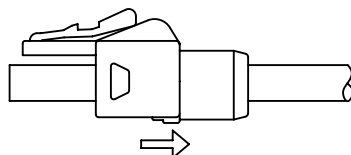
| Part Number     | CL No.        | Material / Finish or Color    | Conductor Size(AWG) | Remarks             | RoHS |
|-----------------|---------------|-------------------------------|---------------------|---------------------|------|
| GT8-2428SCF(70) | 758-0001-8-70 | Phosphor Bronze / Tin plating | #24 to 28           | 10,000 pcs per reel | YES  |

◆ Mating Table

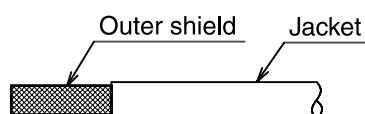
| Color | Cable side connector        | Board connector                         |                 |
|-------|-----------------------------|---|-----------------|
|       |                             | Angle Type                              | Straight Type   |
| Brown | GT17HNS-4DS-ASSY(Key TypeA) | GT17HN-4DP-2H(A)                        | GT17HJ-4DP-2DSA |
| Green | GT17HNS-4DS-ASSY(Key TypeB) | GT17HN-4DP-2H(B)<br>GT17HN-4/4DP-2H(BC) |                 |
| Blue  | GT17HNS-4DS-ASSY(Key TypeC) | GT17HN-4DP-2H(C)<br>GT17HN-4/4DP-2H(BC) |                 |

## ◆ Wiring Method (4-Conductor Straight Type)

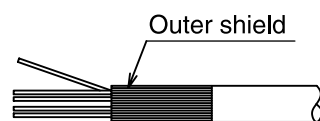
- ① Insert housing to the cable.



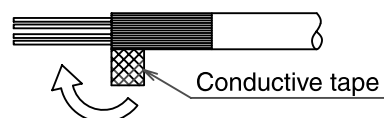
- ② Strip Jacket.



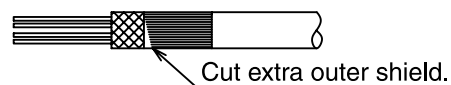
- ③ Turn Outer shield to backward.



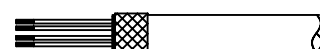
- ④ Cover the cable by conductive tape.



- ⑤ Cut extra outer shield.



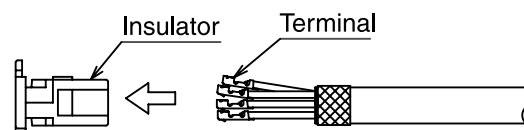
- ⑥ Strip Jacket.



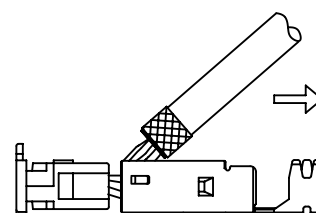
- ⑦ Crimp the terminal.



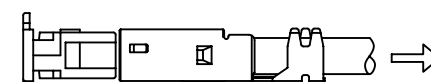
- ⑧ Insert terminal to the Insulator.



- ⑨ Set outer tube terminal to the insulator.



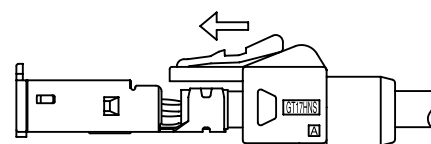
- ⑩ Set outer tube terminal to the insulator.



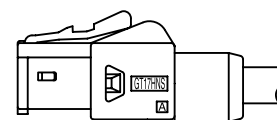
- ⑪ Crimp outertube terminal.



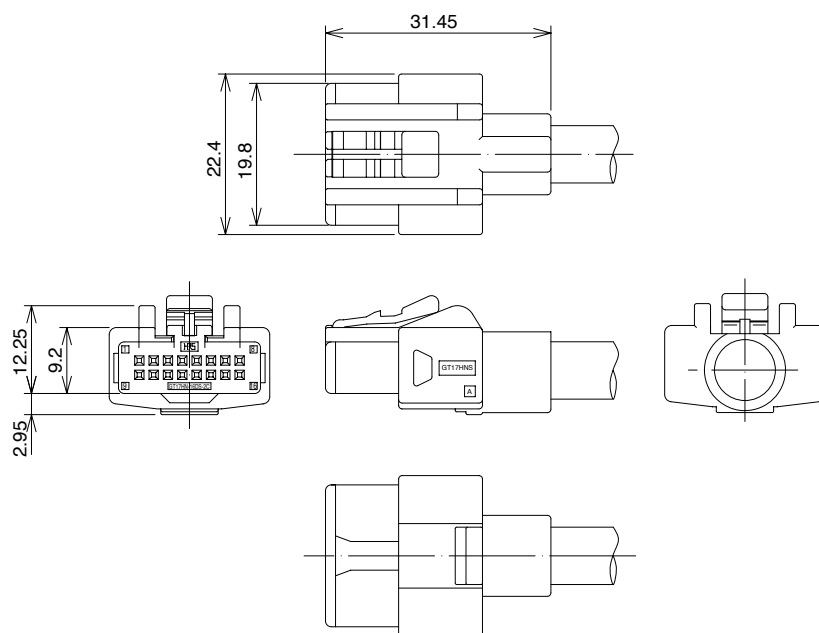
- ⑫ Slide up housing to outer tube terminal.



- ⑬ Finish.



## 16-Conductor Straight Connectors



◆ The product comprises 4 parts.  
(Housing, insulator, outer terminal, and center terminal)

### ● Housing

| Part Number     | CL No.     | Material / Finish or Color | Packaging | RoHS |
|-----------------|------------|----------------------------|-----------|------|
| GT17HNS-16DS-HU | 767-0164-3 | PBT / Dark Gray            | 1         | YES  |

### ● Insulator

| Part Number    | CL No.     | Material / Finish or Color | Packaging | RoHS |
|----------------|------------|----------------------------|-----------|------|
| GT17HN-16DS-2C | 767-0162-8 | PBT / Light Gray           | 1         | YES  |

### ● Outer terminal

| Part Number      | CL No.     | Material / Finish or Color | Packaging | RoHS |
|------------------|------------|----------------------------|-----------|------|
| GT17HNS-16DS-8CF | 767-0165-6 | Copper alloy / Tin plating | 1         | YES  |

### ● Center terminal

| Part Number     | CL No.        | Material / Finish or Color    | Conductor Size(AWG) | Remarks             | RoHS |
|-----------------|---------------|-------------------------------|---------------------|---------------------|------|
| GT8-2428SCF(70) | 758-0001-8-70 | Phosphor Bronze / Tin plating | #24 to 28           | 10,000 pcs per reel | YES  |

### ◆ Mating Table

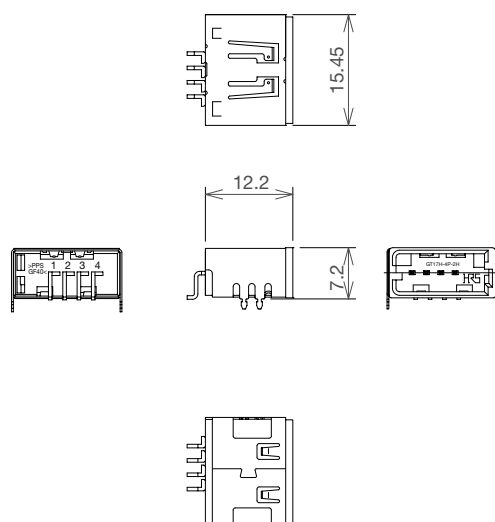
| Board connector |
|-----------------|
| GT17HN-16DP-2H  |

## GT17 Series

### 4-Conductor SMT Connector(Right side key)



GT17H-4P-2H



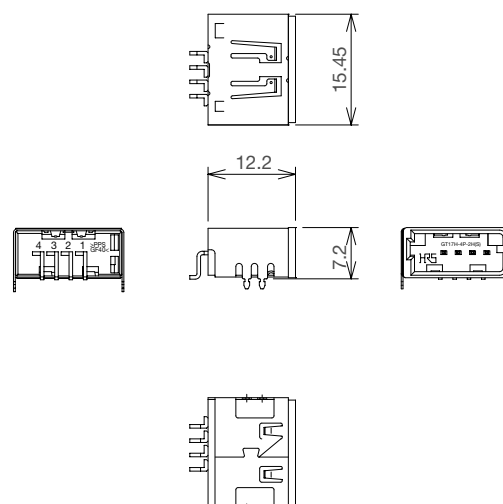
|                        |                |
|------------------------|----------------|
|                        |                |
| Standard<br>Light gray | Key B<br>Green |
|                        |                |
| Key A<br>Brown         | Key C<br>Blue  |

| Part Number    | CL No.     | Color      | Material / Finish   | Packaging        | RoHS |
|----------------|------------|------------|---|------------------|------|
| GT17H-4P-2H    | 767-0083-3 | Light Gray | Housing:PPS<br>Center terminal:Brass/Tin plating<br>Outer terminal:Copper alloy/Tin plating | 400 pcs.per reel | YES  |
| GT17H-4S-2C(A) | 767-0167-1 | Brown      |   |                  |      |
| GT17H-4S-2C(B) | 767-0168-4 | Green      |   |                  |      |
| GT17H-4S-2C(C) | 767-0169-7 | Blue       |   |                  |      |

### 4-Conductor SMT Connector(Left side key)



GT17HR-4P-2H



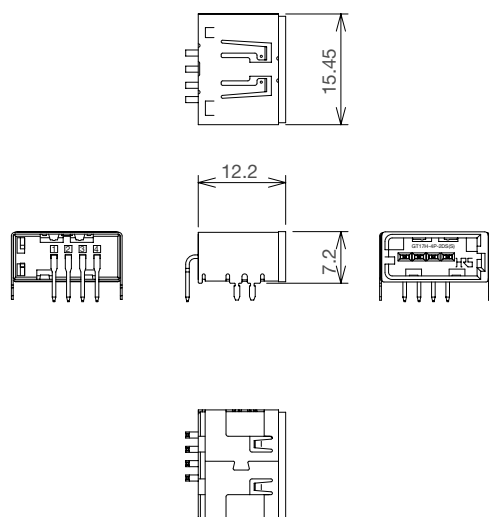
|                        |                |
|------------------------|----------------|
|                        | Planning       |
| Standard<br>Light gray | Key B<br>Green |
| Planning               | Planning       |
| Key A<br>Brown         | Key C<br>Blue  |

| Part Number  | CL No.     | Color      | Material / Finish   | Packaging        | RoHS |
|--------------|------------|------------|---|------------------|------|
| GT17HR-4P-2H | 767-0146-1 | Light Gray | Housing:PPS<br>Center terminal:Brass/Tin plating<br>Outer terminal:Copper alloy/Tin plating | 400 pcs.per reel | YES  |

## 4-Conductor Printed Circuit Board Connector



**GT17H-4P-2DS**



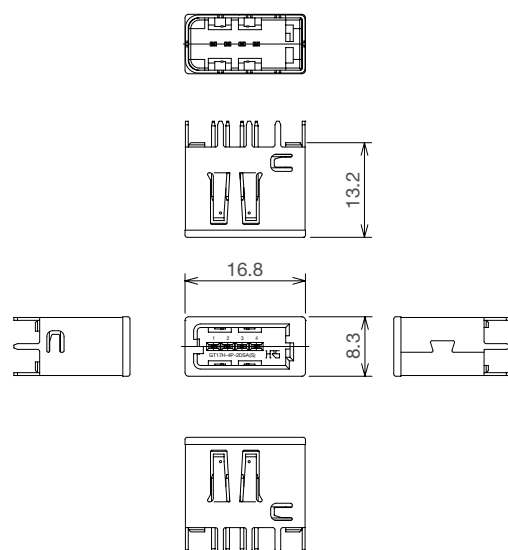
|            |       |
|------------|-------|
|            |       |
| Standard   | Key B |
| Light gray | Green |
|            |       |
| Key A      | Key C |
| Brown      | Blue  |

| Part Number     | CL No.     | Color      | Material / Finish   | Packaging        | RoHS |
|-----------------|------------|------------|---|------------------|------|
| GT17H-4P-2DS    | 767-0166-9 | Light Gray | Housing:PPS<br>Center terminal:Brass/Tin plating<br>Outer terminal:Copper alloy/Tin plating | 300 pcs.per reel | YES  |
| GT17H-4S-2DS(A) | 767-0210-9 | Brown      |   |                  |      |
| GT17H-4S-2DS(B) | 767-0211-1 | Green      |   |                  |      |
| GT17H-4S-2DS(C) | 767-0212-1 | Blue       |   |                  |      |

## 4-Conductor Printed Circuit Board Connector



**GT17H-4P-2DSA**



|            |       |
|------------|-------|
|            |       |
| Standard   | Key B |
| Light gray | Green |
|            |       |
| Key A      | Key C |
| Brown      | Blue  |

| Part Number      | CL No.     | Color      | Material / Finish   | Packaging       | RoHS |
|------------------|------------|------------|---|-----------------|------|
| GT17H-4P-2DSA    | 767-0181-2 | Light Gray | Housing:PPS<br>Center terminal:Brass/Tin plating<br>Outer terminal:Copper alloy/Tin plating | 80 pcs.per tray | YES  |
| GT17H-4P-2DSA(A) | 767-0182-5 | Brown      |   |                 |      |
| GT17H-4P-2DSA(B) | 767-0183-8 | Green      |   |                 |      |
| GT17H-4P-2DSA(C) | 767-0184-0 | Blue       |   |                 |      |

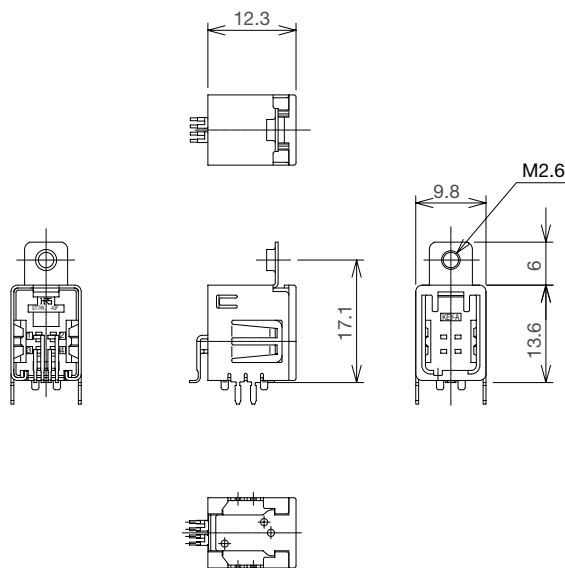
## GT17 Series

### 4-Conductor SMT Connector

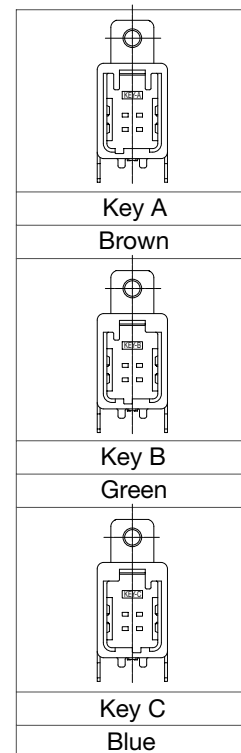
- With M2.6 screw flange



GT17HN-4DP-2H(A)



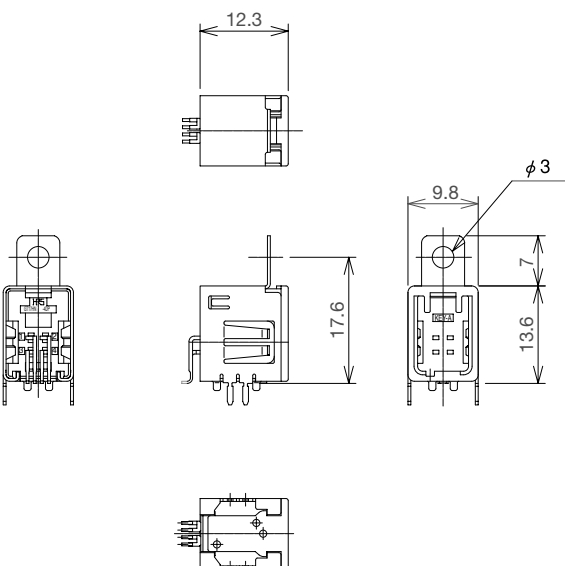
| Part Number      | CL No.     | Color | Material / Finish                       | Packaging       | RoHS |
|------------------|------------|-------|---|-----------------|------|
| GT17HN-4DP-2H(A) | 767-0144-6 | Brown | Housing:PPS                             | 60 pcs.per tray | YES  |
| GT17HN-4DP-2H(B) | 767-0175-0 | Green | Center terminal:Brass/Tin plating       |                 |      |
| GT17HN-4DP-2H(C) | 767-0176-2 | Blue  | Outer terminal:Copper alloy/Tin plating |                 |      |



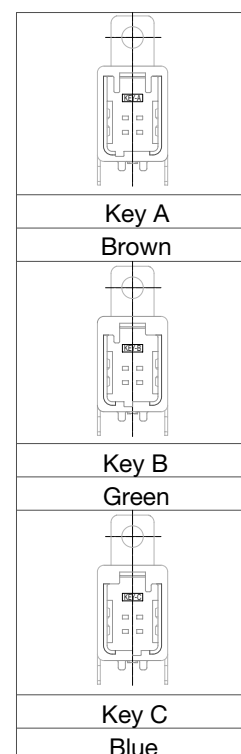
- With 3.2 dia. hole flange



GT17HN-4DP-2H(A)(11)



| Part Number          | CL No.        | Color | Material / Finish                       | Packaging       | RoHS |
|----------------------|---------------|-------|---|-----------------|------|
| GT17HN-4DP-2H(A)(11) | 767-0144-6-11 | Brown | Housing:PPS                             | 60 pcs.per tray | YES  |
| GT17HN-4DP-2H(B)(11) | 767-0175-0-11 | Green | Center terminal:Brass/Tin plating       |                 |      |
| GT17HN-4DP-2H(C)(11) | 767-0176-2-11 | Blue  | Outer terminal:Copper alloy/Tin plating |                 |      |

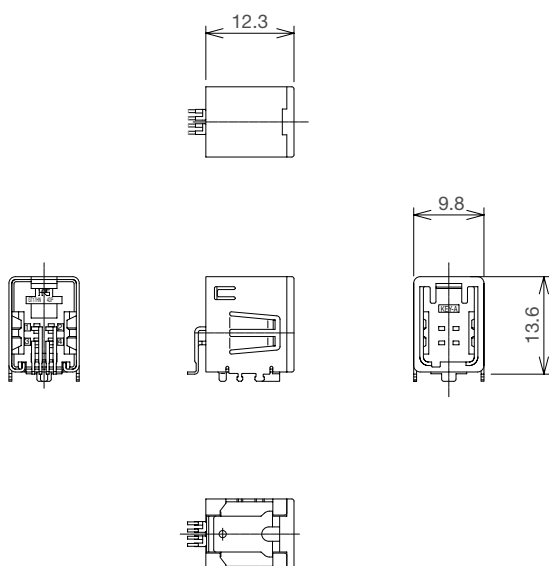




● Without flange



**GT17HN-4DP-2H(A)(14)**



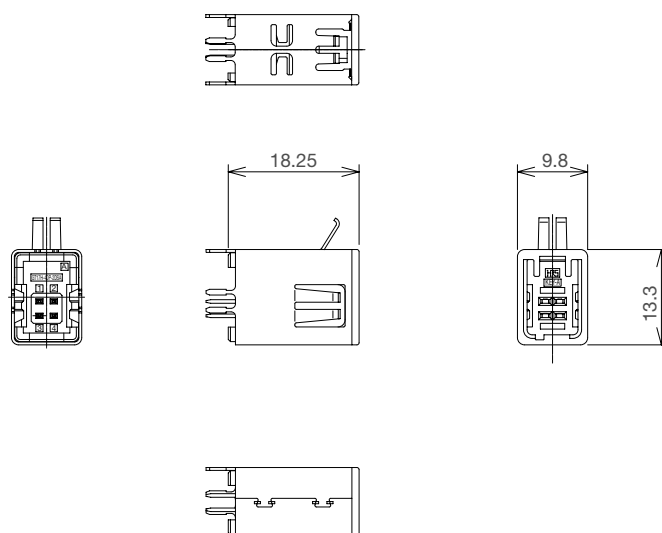
|       |
|-------|
|       |
| Key A |
| Brown |
|       |
| Key B |
| Green |
|       |
| Key C |
| Blue  |

| Part Number          | CL No.        | Color | Material / Finish                       | Packaging        | RoHS |
|----------------------|---------------|-------|---|------------------|------|
| GT17HN-4DP-2H(A)(14) | 767-0144-6-14 | Brown | Housing:PPS                             | 300 pcs.per reel | YES  |
| GT17HN-4DP-2H(B)(14) | 767-0175-0-14 | Green | Center terminal:Brass/Tin plating       |                  |      |
| GT17HN-4DP-2H(C)(14) | 767-0176-2-14 | Blue  | Outer terminal:Copper alloy/Tin plating |                  |      |

## 4-Conductor Printed Circuit Board Connector



**GT17HJ-4DP-2DSA**



| Part Number     | CL No.        | Color | Material / Finish   | Packaging       | RoHS |
|-----------------|---------------|-------|---|-----------------|------|
| GT17HJ-4DP-2DSA | 767-0144-6-14 | Brown | Housing:PPS<br>Center terminal:Brass/Tin plating<br>Outer terminal:Copper alloy/Tin plating | 65 pcs.per reel | YES  |

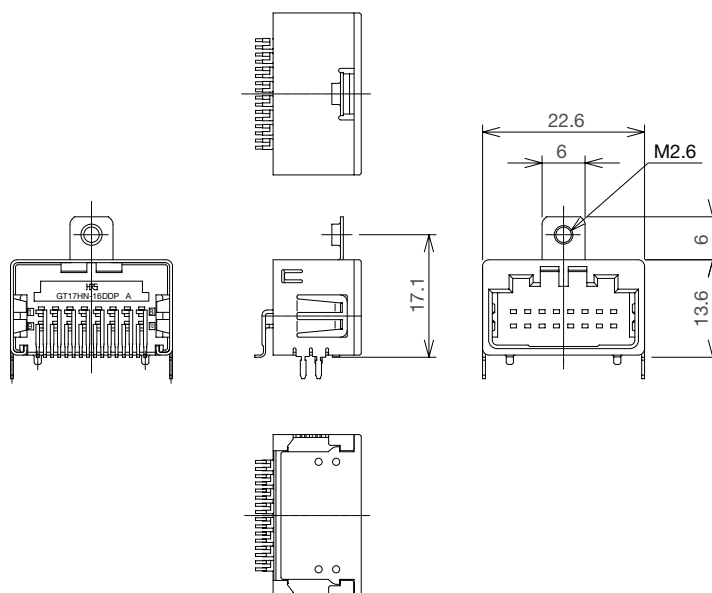
## GT17 Series

### 4/4 Conductor SMT Connector

● With M2.6 screw flange



**GT17HN-4/4DP-2H(BC)**

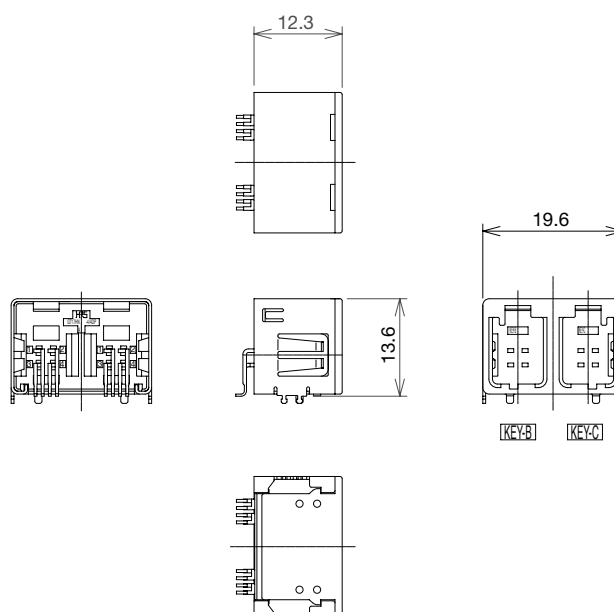


| Part Number         | CL No.     | Color      | Material / Finish   | Packaging       | RoHS |
|---------------------|------------|------------|---|-----------------|------|
| GT17HN-4/4DP-2H(BC) | 767-0145-9 | Light gray | Housing:PPS<br>Center terminal:Brass/Tin plating<br>Outer terminal:Copper alloy/Tin plating | 40 pcs.per tray | YES  |

● Without flange



**GT17HN-4/4DP-2H(BC)(14)**



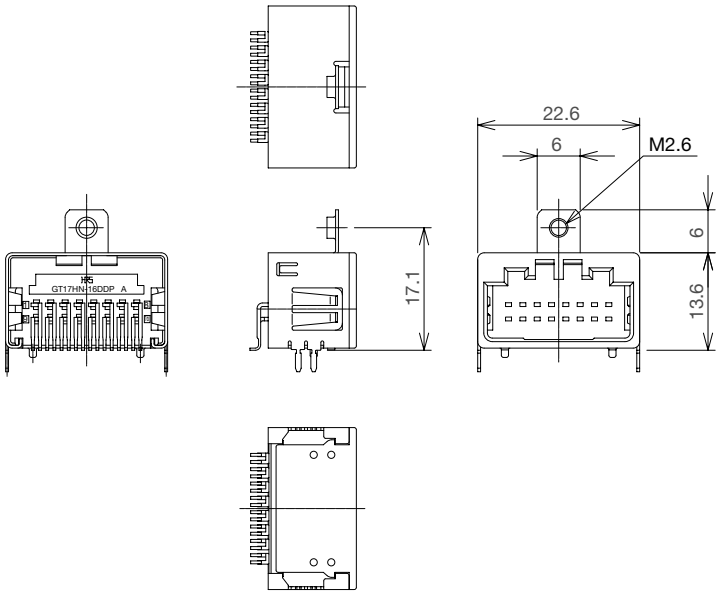
| Part Number             | CL No.        | Color      | Material / Finish   | Packaging        | RoHS |
|-------------------------|---------------|------------|---|------------------|------|
| GT17HN-4/4DP-2H(BC)(14) | 767-0145-9-14 | Light gray | Housing:PPS<br>Center terminal:Brass/Tin plating<br>Outer terminal:Copper alloy/Tin plating | 200 pcs.per reel | YES  |

16 Conductor SMT Connector

● With M2.6 screw flange



GT17HN-16DP-2H



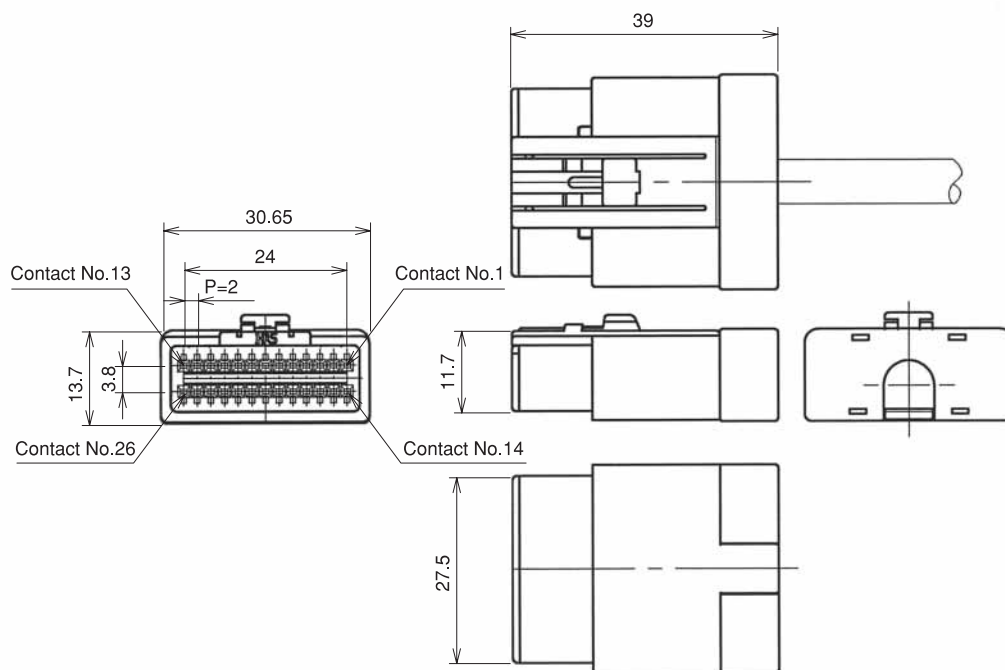
| Part Number    | CL No.     | Color      | Material / Finish   | Packaging       | RoHS |
|----------------|------------|------------|---|-----------------|------|
| GT17HN-16DP-2H | 767-0153-7 | Light gray | Housing:PPS<br>Center terminal:Brass/Tin plating<br>Outer terminal:Copper alloy/Tin plating | 40 pcs.per tray | YES  |

## GT17 Series

Coaxial cable connection of Antennas, Sensors, and Communication Trunk Lines

GT 5  
GT 13  
GT 16  
PO5G  
GT 11  
GT 14  
GT 17  
GT 19  
GT 3  
GT 6W  
GT 7  
GT 10  
GT 18W  
GT 15  
GT 8  
GT 9  
GT 25

### 26-Conductor Straight Connectors



#### ◆The product comprises 6 parts.

(Housing, insulator, outer terminal, shield plate, retainer, and center terminal)

##### ● Housing

| Part Number   | CL No.     | Material / Finish or Color | Packaging | RoHS |
|---------------|------------|----------------------------|-----------|------|
| GT17H-26DS-HU | 767-0094-0 | PBT / Light Gray           | 1         | YES  |

##### ● Insulator

| Part Number   | CL No.     | Material / Finish or Color | Packaging | RoHS |
|---------------|------------|----------------------------|-----------|------|
| GT17H-26DS-2C | 767-0095-2 | PBT / Dark Gray            | 1         | YES  |

##### ● Outer terminal

| Part Number      | CL No.     | Material / Finish or Color | Packaging | RoHS |
|------------------|------------|----------------------------|-----------|------|
| GT17H-26DS-6.5CF | 767-0097-8 | Copper alloy / Tin plating | pack      | YES  |

##### ● Shield plate

| Part Number   | CL No.     | Material / Finish or Color | Packaging | Remarks         | RoHS |
|---------------|------------|----------------------------|-----------|-----------------|------|
| GT17H-26DS-SC | 767-0096-5 | Copper alloy / Tin plating | pack      | 612pcs per pack | YES  |

##### ● Retainer

| Part Number  | CL No.     | Material / Finish or Color | Packaging | RoHS |
|--------------|------------|----------------------------|-----------|------|
| GT17H-26DS-R | 767-0098-0 | PBT / Dark Gray            | 1         | YES  |

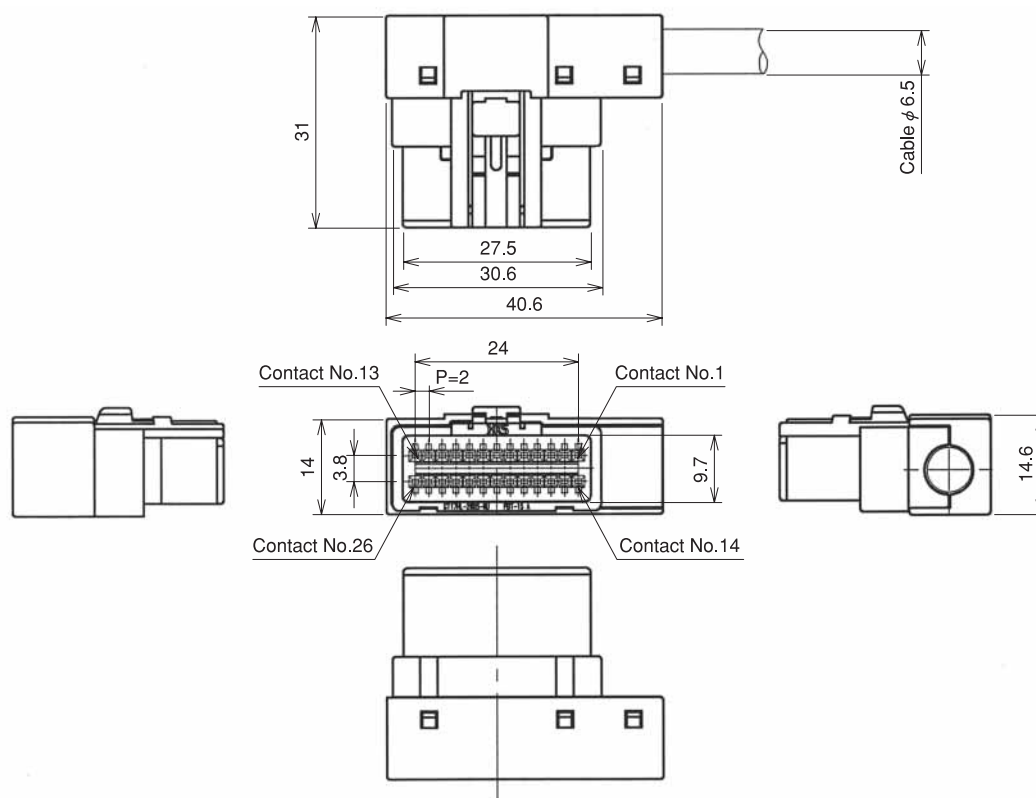
##### ● Center terminal

| Part Number  | CL No.     | Material / Finish or Color | Conductor Size | Sheath Diameter | Notes                  | RoHS |
|--------------|------------|----------------------------|----------------|-----------------|------------------------|------|
| GT25-2428SCF | 758-0013-2 | Copper alloy / Tin plating | AWG#24~28      | φ 1.3~1.5       | 1 reel (10,000 pieces) | YES  |
| GT25-2630SCF | 758-0012-0 | Copper alloy / Tin plating | AWG#26~30      | φ 0.7~1.0       | 1 reel (10,000 pieces) |      |

#### ◆ Mating Table

| Color | Cable side connector | Board connector             |
|-------|----------------------|-----------------------------|
| Gray  | GT17H-26DS-HU        | GT17H-26DP-DS(Board type)   |
|       |                      | GT17H-26DP-HU(In-line type) |

## 26-Conductor Right-angle Connectors (Left Bend)



◆The product comprises 6 parts.

(Housing, insulator, outer terminal, shield plate, retainer, and center terminal)

●Housing

| Part Number    | CL No.     | Material / Finish or Color | Packaging | RoHS |
|----------------|------------|----------------------------|-----------|------|
| GT17HL-26DS-HU | 767-0099-3 | PBT / Light Gray           | 1         | YES  |

●Insulator

| Part Number   | CL No.     | Material / Finish or Color | Packaging | RoHS |
|---------------|------------|----------------------------|-----------|------|
| GT17H-26DS-2C | 767-0095-2 | PBT / Dark Gray            | 1         | YES  |

●Outer terminal

| Part Number       | CL No.     | Material / Finish or Color | Packaging | Remarks         | RoHS |
|-------------------|------------|----------------------------|-----------|-----------------|------|
| GT17HL-26DS-6.5CF | 767-0101-3 | Copper alloy / Tin plating | pack      | 612pcs per pack | YES  |

●Shield plate

| Part Number      | CL No.     | Material / Finish or Color | Packaging | Remarks         | RoHS |
|------------------|------------|----------------------------|-----------|-----------------|------|
| GT17HL/R-26DS-SC | 767-0100-0 | Copper alloy / Tin plating | pack      | 612pcs per pack | YES  |

●Retainer

| Part Number   | CL No.     | Material / Finish or Color | Packaging | RoHS |
|---------------|------------|----------------------------|-----------|------|
| GT17HL-26DS-R | 767-0102-6 | PBT / Dark Gray            | 1         | YES  |

●Center terminal

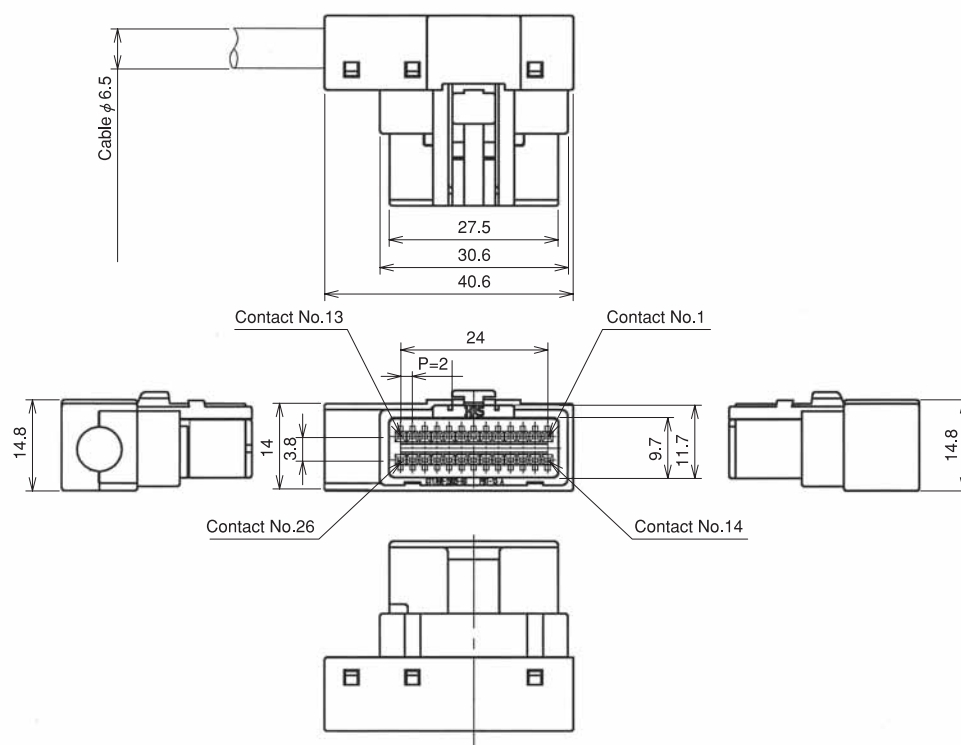
| Part Number  | CL No.     | Material / Finish or Color | Line Size | Cover Size | Note               | RoHS |
|--------------|------------|----------------------------|-----------|------------|--------------------|------|
| GT25-2428SCF | 758-0013-2 | Copper alloy / Tin plating | AWG#24~28 | φ 1.3~1.5  | 10,000pcs per pack | YES  |
| GT25-2630SCF | 758-0012-0 | Copper alloy / Tin plating | AWG#26~30 | φ 0.7~1.0  | 10,000pcs per pack |      |

### ◆ Mating Table

| Color | Cable side connector | Board connector             |
|-------|----------------------|-----------------------------|
| Gray  | GT17HL-26DS-HU       | GT17H-26DP-DS(Boad type)    |
|       |                      | GT17H-26DP-HU(In-line type) |

## GT17 Series

### 26-Conductor Straight Connectors (Right Bend)



◆The product comprises 6 parts.

(Housing, insulaor, outer terminal, shield plate, retainer, and center terminal)

#### ●Housing

| Part Number    | CL No.     | Material / Finish or Color | Packaging | RoHS |
|----------------|------------|----------------------------|-----------|------|
| GT17HR-26DS-HU | 767-0118-6 | PBT / Light Gray           | 1         | YES  |

#### ●Insulator

| Part Number   | CL No.     | Material / Finish or Color | Packaging | RoHS |
|---------------|------------|----------------------------|-----------|------|
| GT17H-26DS-2C | 767-0095-2 | PBT / Dark Gray            | 1         | YES  |

#### ●Outer terminal

| Part Number       | CL No.     | Material / Finish or Color | Packaging | Remarks         | RoHS |
|-------------------|------------|----------------------------|-----------|-----------------|------|
| GT17HR-26DS-6.5CF | 767-0119-9 | Copper alloy / Tin plating | pack      | 612pcs per pack | YES  |

#### ●Shield plate

| Part Number      | CL No.     | Material / Finish or Color | Packaging | Remarks         | RoHS |
|------------------|------------|----------------------------|-----------|-----------------|------|
| GT17HL/R-26DS-SC | 767-0100-0 | Copper alloy / Tin plating | pack      | 612pcs per pack | YES  |

#### ●Retainer

| Part Number   | CL No.     | Material / Finish or Color | Packaging | RoHS |
|---------------|------------|----------------------------|-----------|------|
| GT17HR-26DS-R | 767-0120-8 | PBT / Dark Gray            | 1         | YES  |

#### ●Center terminal

| Part Number  | CL No.     | Material / Finish or Color | Line Size | Cover Size | Note               | RoHS |
|--------------|------------|----------------------------|-----------|------------|--------------------|------|
| GT25-2428SCF | 758-0013-2 | Copper alloy / Tin plating | AWG#24~28 | φ 1.3~1.5  | 10,000pcs per pack | YES  |
| GT25-2630SCF | 758-0012-0 | Copper alloy / Tin plating | AWG#26~30 | φ 0.7~1.0  | 10,000pcs per pack |      |

#### ◆ Mating Table

| Color | Cable side connector | Board connector             |
|-------|----------------------|-----------------------------|
| Gray  | GT17HR-26DS-HU       | GT17H-26DP-DS(Board type)   |
|       |                      | GT17H-26DP-HU(In-line type) |

## 26-Conductor Printed Circuit Board Connectors (Color: Light Gray)

| Part Number   | CL No.     | Material / Finish or Color  | Packaging | RoHS |
|---------------|------------|---|-----------|------|
| GT17H-26DP-DS | 767-0088-7 | Housing: PBT/Light gray<br>Center terminal: Brass /Tin plating<br>Outer terminal: Copper alloy /Tin plating | 1         | YES  |

