



ESSENTRA

MILES OF PIPE AND FLANGE PROTECTION

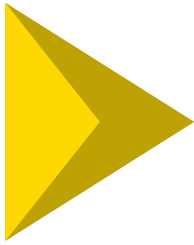
Essentra Components offer a wide range of plastic products for the protection of Pipes and Flanges.

The extensive range protects against corrosion and damage during manufacture, transit and storage.

- Large selection of sizes with optional vent holes
- Choice of colours
- Bevel protection and inner wall protection for crane hook handling
- Light and flexible materials for an easy application and a reliable protection
- Wide range of pressure group compatibility



www.essentracomponents.co.uk



PIPE AND FLANGE PROTECTION

Pipe Caps

110-114



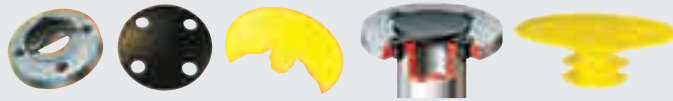
Pipe Plugs

115



Flange Protection

116-127

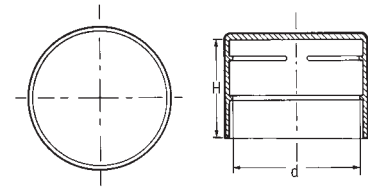


Caps for Standard Pipe Sizes

SR 1358/1352

Yellow LDPE

- Low cost and high quality
- Internal ribs ensure tight fit and release pressure build-up



Part Number No Vent Hole	Part Number Vent Hole	Nominal Pipe Size	Dimensions (mm)	
			d	H
10286	43558	DN 15 1/2"	21.3	20.0
10287	43559	DN 20 3/4"	26.9	25.0
10288	43560	DN 25 1"	33.7	30.0
10294	10268	DN 32 1 3/4"	42.4	28.0
10295	10269	DN 40 1 1/2"	48.3	30.0
10296	10267	DN 50 2"	60.3	30.0
10298	10266	DN 65 2 1/2"	76.1	35.0
199480	199481	DN 80 3"	88.9	36.0
199482	199483	DN 90 3 1/2"	101.6	40.0
199484	199485	DN 100 4"	114.3	40.0
199486		DN 115 4 1/2"	127.0	40.0
199488	199489	DN 125 5"	139.7	40.0
199490		DN 140 5 1/2"	152.4	40.0
199492	199493	DN 150 6"	168.3	40.0
199494	199495	DN 200 8"	219.1	40.0
199496	199497	DN 250 10"	273.0	45.0
199498	199499	DN 300 12"	323.9	50.0
43970		DN 350 14"	355.6	57.0
43971	43455	DN 400 16"	406.4	60.5

Part Number No Vent Hole	Part Number Vent Hole	Nominal Pipe Size	Dimensions (mm)	
			d	H
43972		DN 450 18"	457.2	63.0
43973	43457	DN 500 20"	508.0	65.0
31710		DN 550 22"	558.8	60.0
43974	43458	DN 600 24"	609.6	67.0
31713**		DN 650 26"	660.4	100.0
110284*	110300*	DN 700 28"	711.2	120.0
110285*	110303*	DN 750 30"	762.0	120.0
110286*	110306*	DN 800 32"	812.8	120.0
34240**		DN 850 34"	863.6	170.0
110287*	110309*	DN 900 36"	914.4	150.0
34244**		DN 950 38"	965.2	180.0
31727**		DN 1000 40"	1016.0	180.0
31731**	42013**	DN 1050 42"	1066.8	185.0
34248**		DN 1100 44"	1117.8	185.0
31725				200.0
34252**		DN 1400 56"	1422.4	215.0
34254**		DN 1500 60"	1524.0	220.0
34256**		DN 1600 64"	1625.6	230.0

* Black LDPE ** Flexible PE

Maximum vent hole size is 4mm on 1 1/4" to 12" pipe caps and as specified for larger sizes.

Nominal diameters above DN 300 - 12" are the exact conversion of the d dimension.

Ribbed Pipe-End Plug

SR 1171

Red LDPE



Part Number	Pipe Outside Diameter (mm)	Max Wall Thickness (mm)	Number of Fin	Dimensions (mm)						Std Pack Qty
				d1	d2	d3	d4	D	H	
492200	10.0	-	2	11.7	5.7	-	-	9.9	11.5	2000
492201	12.0	4.5	2	11.8	6.0	-	-	11.7	20.0	2000
492202	15.0	5.0	2	17.7	9.8	-	-	14.7	20.0	2000
492203	16.0	5.0	2	17.6	9.8	-	-	15.7	20.0	2000
492204	18.0	6.0	2	17.6	9.8	-	-	17.7	20.0	2000
492205	20.0	4.0	3	22.0	19.3	14.4	12.0	19.7	31.4	2000
492206	21.3	4.5	3	22.0	19.5	14.7	11.8	20.8	31.4	2000
492207	22.0	4.5	3	22.0	19.6	14.5	11.9	21.7	31.4	2000
492208	24.8-25.0	4.5	2	-	30.1	25.0	15.8	24.7	31.4	2000
492209	26.0-26.9	5.5	2	-	30.1	25.0	16.0	26.0	31.4	2000
492210	28.0-28.5	5.5	2	-	30.1	25.0	15.4	27.7	31.4	2000
492211	30.0	8.0	2	-	30.1	25.0	15.5	29.7	30.8	2000
492212	33.7	8.0	2	-	38.0	31.7	17.9	32.5	30.8	2000
492213	35.0	8.0	2	-	38.0	31.7	18.1	34.7	30.8	1000

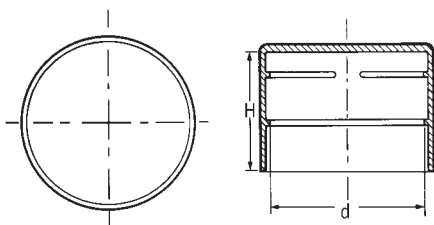
Part Number	Pipe Outside Diameter (mm)	Max Wall Thickness (mm)	Number of Fin	Dimensions (mm)						Std Pack Qty
				d1	d2	d3	d4	D	H	
492214	38.0	8.0	2	-	38.0	31.7	17.9	37.7	30.8	1000
492215	40.0	8.0	2	-	46.7	36.9	25.0	39.7	30.8	1000
492216	41.3-42.4	8.0	2	-	46.7	36.9	25.9	41.0	30.8	1000
492217	47.5-48.3	9.0	2	-	54.5	45.5	28.9	47.5	25.0	500
492218	50.0	10.0	2	-	54.7	45.5	29.3	49.7	25.0	500
492219	54.0	10.0	2	-	54.7	45.1	29.0	53.7	25.0	500
492220	60.3	14.0	2	-	61.0	55.4	35.9	59.7	20.0	500
492221	63.5	12.0	2	-	61.0	55.4	36.0	63.0	30.0	500
492222	73.0	16.0	2	-	74.0	65.3	48.2	72.7	30.0	200
492223	75.0-76.2	16.0	2	-	74.0	65.3	48.7	75.0	31.5	200
492224	85.0	17.0	2	-	88.4	79.0	60.3	84.0	31.5	200
492225	88.9	17.0	2	-	88.4	79.0	60.3	88.0	31.5	200
492226	114.3	20.0	2	-	113.0	108.5	70.0	113.6	35.0	100

Ribbed Pipe Caps

SR 1387

LDPE

- Injection-moulded caps with internal ribs
- Meet ANSI and DIN specifications



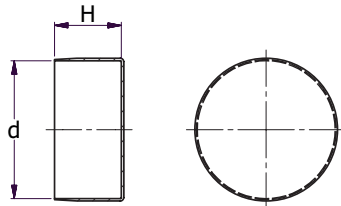
Part Number	Nominal Diameter	Dimensions (mm)		Colour
		d	H	
34098	-	10.0	13.0	Grey
12773	-	10.2	16.0	Red
12774	-	12.0	16.0	Red
462573	-	12.7	15.0	Black
34101	1/4"	13.7	13.0	Grey
34102	-	14.0	13.0	Grey
34103	-	15.0	13.0	Grey
12775	-	15.0	20.0	Red
34104	-	16.0	13.0	Grey
12776	-	16.0	20.0	Red
34105	3/8"	17.2	13.0	Grey
34106	-	18.0	13.0	Grey
12849	-	18.0	20.0	Red
34108	-	20.0	20.0	Grey
12777	-	20.0	20.0	Red
34110	-	22.0	20.0	Grey
12850	-	22.0	20.0	Red
34111	-	24.0	20.0	Grey
34112	-	25.0	20.0	Grey
12779	-	25.0	20.0	Red
34113	-	26.0	20.0	Grey
34115	-	28.0	20.0	Grey
12780	-	28.0	26.5	Red
12846	-	30.0	26.5	Red
34118	-	32.0	30.0	Grey
12956	-	32.0	26.8	Yellow
462574	-	35.0	28.0	Black
34120	-	35.0	30.0	Grey
12781	-	35.0	26.5	Red
34121	-	38.0	30.0	Grey
12782	-	38.0	27.0	Red
12616	-	39.3	25.0	Yellow
34123	-	40.0	30.0	Grey
12957	-	40.0	26.7	Yellow
34124	-	41.5	30.0	Grey
12783	-	41.5	27.0	Red
34128	-	50.0	30.0	Grey
462576	-	50.8	29.0	Black
34130	-	51.0	30.0	Grey
34131	-	52.0	30.0	Grey
462577	-	54.0	36.0	Black
34132	1 3/4"	54.0	30.0	Grey
12982	-	54.0	27.8	Red
34134	-	57.0	30.0	Grey
34135	-	59.0	30.0	Grey

Part Number	Nominal Diameter	Dimensions (mm)		Colour
		d	H	
34138	-	63.5	30.0	Grey
12617	-	63.5	29.0	Yellow
462578	-	63.5	33.0	Yellow
34139	-	66.5	30.0	Grey
34141	-	70.0	30.0	Grey
34142	-	73.0	30.0	Grey
462579	-	75.0	38.0	Black
34143	-	75.0	30.0	Grey
12618	-	75.0	31.0	Yellow
462580	-	77.0	32.0	Black
34145	-	77.0	30.0	Grey
462581	-	78.0	32.0	Black
462582	-	79.4	28.0	Black
462583	-	80.5	28.0	Black
34146	-	82.0	30.0	Grey
34149	-	83.0	30.0	Grey
34150	-	85.0	40.0	Grey
34153	-	90.0	40.0	Grey
12959	-	92.0	34.5	Yellow
462584	-	92.4	32.0	Yellow
10076	-	94.0	40.0	Red
34155	-	95.0	40.0	Grey
12633	-	95.5	33.0	Yellow
462585	-	96.5	39.0	Red
462586	-	100.3	40.0	Red
34162	-	104.0	40.0	Grey
34165	-	108.0	40.0	Grey
34166	-	110.0	40.0	Grey
12960	-	110.0	34.6	Yellow
34167	-	111.0	40.0	Grey
34172	-	125.0	40.0	Grey
12619	-	125.0	35.0	Yellow
12961	-	125.0	34.1	Yellow
31702	-	133.0	40.0	Grey
12620	-	137.0	35.0	Yellow
31635	5"	141.3	40.0	Grey
31712	-	159.0	40.0	Grey
31715	-	160.0	40.0	Grey
31638	-	177.8	40.0	Grey
31717	-	185.0	40.0	Grey
31707	-	193.7	40.0	Grey
34183	-	200.0	40.0	Grey
34185	-	210.0	40.0	Grey
31639	8"	219.1	50.0	Grey
34188	9 1/2"	242.0	50.0	Grey
462589	-	243.0	50.0	Grey

Flexible Pipe Caps

SR 1388

Flexible PE



- Rotational moulded caps in more flexible PE material
- Softer material allows easier fitting on pipe
- Range covers wide range of larger sizes

Part Number	Dimensions (mm)		Nominal Diameter
	d	H	
44100	37.7	45.0	-
34129	50.8	90.0	-
31143	55.7	43.0	-
44029	59.4	52.0	-
41056	60.0	70.0	-
48092	60.3	100.0	DN 50 - 2"
34137	60.3	60.0	DN 50 - 2"
41122	61.0	75.0	-
34140	69.0	36.0	-
48100	70.0	45.0	-
48211	75.0	92.0	-
34148	82.5	40.0	-
34151	86.0	43.0	-
48212	86.0	60.0	-
39866	87.0	42.0	-
601500	88.9	60.0	DN 80 - 3"
34154	92.0	43.0	-
34157	97.0	60.0	-
34156	97.0	43.0	-
34158	100.0	46.0	-
34159	100.0	65.0	-
32709	101.6	100.0	DN 90 - 3½"
34161	103.0	43.0	-
461199	104.0	100.0	-
34163	105.0	43.0	-
34164	107.7	45.0	-
44031	112.7	52.0	-
32710	114.3	100.0	DN 100 - 4"
34169	114.3	50.0	DN 100 - 4"
41113	116.0	60.0	-
41102	117.9	50.0	-
34170	120.9	45.0	-
34171	122.0	45.0	-
32711	127.0	100.0	DN 115 - 4½"
34173	127.0	45.0	DN 115 - 4½"
31641	128.5	90.0	-
34174	136.0	47.0	-
34175	139.7	65.0	DN 125 - 5"
32712	141.3	100.0	-
461038	145.0	20.0	-
34835	148.0	50.0	-
461051	148.5	100.0	-
37010	149.2	8.0	-
41094	150.0	65.0	-
32713	152.4	100.0	DN 140 - 5½"
803083	152.4	40.0	DN 140 - 5½"
32714	155.8	100.0	-
32790	159.0	100.0	-
48231	159.5	20.0	-
41180	160.0	47.0	-
34178	160.0	47.0	-
601313	165.1	100.0	-
39565	165.1	40.0	-
34803	168.3	100.0	DN 150 - 6"

Part Number	Dimensions (mm)		Nominal Diameter
	d	H	
34179	168.3	50.0	DN 150 - 6"
34180	171.0	50.0	-
35282	171.0	100.0	-
34839	176.8	74.0	-
34181	177.8	65.0	-
34182	180.0	50.0	-
41057	180.0	100.0	-
34804	185.0	100.0	-
34805	193.7	100.0	-
41139	193.7	40.0	-
34806	200.0	100.0	-
31704	200.0	50.0	-
34184	203.0	120.0	-
34807	210.0	100.0	-
31781	210.0	50.0	-
34841	212.0	78.0	-
31785	216.0	50.0	-
41017	217.1	65.0	-
34808	219.1	100.0	DN 200 - 8"
34809	219.1	120.0	DN 200 - 8"
31733	219.1	55.0	DN 200 - 8"
34186	225.0	55.0	-
34842	230.0	55.0	-
39162	232.0	55.0	-
34187	235.0	55.0	-
34817	236.0	100.0	-
31746	244.5	55.0	-
34189	250.0	60.0	-
41082	260.0	60.0	-
34190	264.0	60.0	-
34191	267.0	60.0	-
41018	271.3	71.0	-
34810	273.0	100.0	DN 250 - 10"
31724	273.0	115.0	DN 250 - 10"
31735	273.0	65.0	DN 250 - 10"
34192	281.0	65.0	-
34193	285.0	65.0	-
34812	286.0	100.0	-
34194	293.0	80.0	-
34818	298.0	80.0	-
34195	300.0	65.0	-
34196	305.0	80.0	-
34197	311.0	70.0	-
34198	315.0	70.0	-
34199	317.0	80.0	-
31789	318.0	70.0	-
41019	322.2	78.0	-
34814	323.9	100.0	DN 300 - 12"
31694	323.9	75.0	DN 300 - 12"
601152	330.0	100.0	-
34200	330.0	75.0	-
34201	334.0	75.0	-
48213	335.0	100.0	-
34202	338.0	75.0	-

CONTINUED ON NEXT PAGE

Flexible Pipe Caps *CONTINUED*

SR 1388



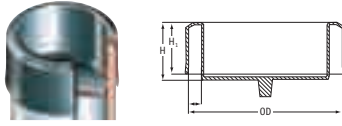
Part Number	Dimensions (mm)		Nominal Diameter
	d	H	
34203	343.0	75	-
34204	350.0	80	-
41020	353.8	89	-
34815	355.6	100	DN 350 - 14"
31726	355.6	30	DN 350 - 14"
31685	355.6	80	DN 350 - 14"
34816	360.0	100	-
34205	368.0	160	-
31709	368.0	80	-
31642	376.0	185	-
600777	376.0	80	-
601168	378.0	100	-
34206	381.0	80	-
34207	388.0	80	-
600776	392.0	100	-
34208	394.0	80	-
34209	400.0	75	-
41021	404.1	103	-
34819	406.4	120	DN 400 - 16"
31664	406.4	85	DN 400 - 16"
34820	410.0	120	-
31706	419.0	90	-
41061	429.0	100	-
36407	432.0	80	-
31730	433.0	100	-
601162	440.0	100	-
34210	445.0	90	-
34211	455.0	80	-
48227	457.2	150	DN 450 - 18"
31687	457.2	95	DN 450 - 18"
34212	463.0	75	-
43139	463.0	80	-
34213	470.0	80	-
34214	482.0	80	-
34215	490.0	95	-
34216	495.0	100	-
600001	505.0	100	-
31689	508.0	105	DN 500 - 20"
48226	508.0	170	DN 500 - 20"
600963	512.8	100	-
34217	514.0	80	-
31708	521.0	110	-
31650	530.0	80	-
34218	532.0	80	-
34219	534.0	80	-
600807	550.0	100	-
31710	558.8	115	DN 550 - 22"
34220	564.0	85	-
601146	570.0	100	-
601127	570.0	85	-
34221	574.0	80	-
34222	585.0	120	-
31729	586.0	90	-
34223	597.0	115	-
31739	609.6	125	DN 600 - 24"
41183	616.0	65	-

Part Number	Dimensions (mm)		Nominal Diameter
	d	H	
34224	616.0	95	-
31711	622.0	130	-
43236	625.4	-	-
34225	635.0	130	-
34226	648.0	80	-
31713	660.4	135	DN 650 - 26"
34227	667.0	100	-
34228	673.0	135	-
34229	686.0	135	-
31718	711.2	145	DN 700 - 28"
34230	711.2	260	DN 700 - 28"
34231	719.0	105	-
31690	730.0	145	-
34232	736.6	145	-
34233	746.0	150	-
31696	762.0	155	DN 750 - 30"
34234	770.0	115	-
601324	773.2	350	-
34235	793.0	80	-
34236	800.0	155	-
31722	812.8	165	DN 800 - 32"
34237	820.0	120	-
34238	825.0	165	-
34239	851.0	80	-
34240	863.6	170	DN 850 - 34"
34241	872.0	125	-
31728	890.0	170	-
34242	902.0	175	-
31701	914.4	175	DN 900 - 36"
34243	921.0	135	-
34244	965.2	180	DN 950 - 38"
34245	975.0	170	-
41071	1000.0	180	-
31727	1016.0	180	DN 1000 - 40"
34246	1026.0	145	-
31731	1066.8	185	DN 1050 - 42"
34247	1078.0	150	-
34248	1117.8	185	DN 1100 - 44"
34249	1129.0	160	-
600803	1150.0	350	-
600937	1168.0	185	DN 1150 - 46"
31725	1219.2	200	DN 1200 - 48"
34250	1231.0	170	-
461006	1270.0	200	DN 1250 - 50"
41138	1320.8	180	DN 1300 - 52"
34251	1340.0	180	-
39127	1371.6	180	DN 1350 - 54"
43155	1384.7	206	-
34252	1422.4	215	DN 1400 - 56"
34253	1437.0	180	-
41101	1450.0	180	-
44127	1455.0	185	-
34254	1524.0	220	DN 1500 - 60"
34256	1625.6	230	DN 1600 - 64"
34257	1642.0	180	-

Heavy-Duty Recessed Caps

SR 1370

Black LDPE

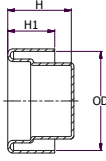
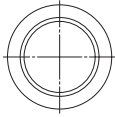


- Protect pipe bevels and internal walls from corrosion and damage
- Accept crane hooks for moving pipes during storage, transit and laying
- Resistant to temperatures from -30 °C to +60 °C
- WT is wall thickness

Part Number	To Fit Pipe Specification		Dimensions (mm)				Std Pack Qty
	DIN	Nominal Diameter	OD	WT	H	H1	
110423	DN 150	6"	168.3	15.0	100.0	90.0	30
110424	DN 150	6"	168.3	23.0	100.0	90.0	30
110425	DN 200	8"	219.1	15.0	100.0	90.0	20
110426	DN 200	8"	219.1	23.0	100.0	90.0	20
110427	DN 250	10"	273.0	15.0	100.0	90.0	12
110428	DN 250	10"	273.0	23.0	100.0	90.0	10
110429	DN 250	10"	273.0	32.0	100.0	90.0	12
110430	DN 300	12"	323.9	15.0	100.0	90.0	25
110431	DN 300	12"	323.9	23.0	100.0	90.0	25
110432	DN 300	12"	323.9	32.0	100.0	90.0	25
110433	DN 350	14"	355.6	23.0	100.0	90.0	50
110434	DN 350	14"	355.6	32.0	100.0	90.0	50
110435	DN 400	16"	406.4	23.0	100.0	90.0	50
110436	DN 400	16"	406.4	32.0	100.0	90.0	50

Flexible Recessed Caps

Yellow PE



- Protect pipe bevels and internal walls from corrosion and damage
- Soft material for easy fitting on large sizes
- Accept crane hooks for moving pipes during storage, transit and laying
- WT is wall thickness

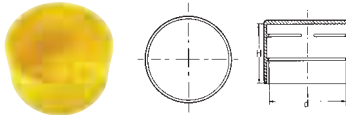
Part Number	To Fit Pipe Specification		Dimensions (mm)			
	DIN	Nominal Diameter	OD	WT	H	H1
31018	DN 180	6"	168.3	28.0	100.0	55.0
34846	DN 200	8"	219.1	23.2	100.0	55.0
34848	DN 250	10"	273.0	18.1	100.0	55.0
34853	DN 300	12"	323.9	26.0	105.0	55.0
34855	DN 350	14"	355.6	28.3	105.0	55.0
34858	DN 400	16"	406.4	26.2	105.0	70.0
34860	DN 450	18"	457.2	26.2	105.0	70.0
34862	DN 500	20"	508.0	27.7	105.0	70.0

Part Number	To Fit Pipe Specification		Dimensions (mm)			
	DIN	Nominal Diameter	OD	WT	H	H1
34865	DN 600	24"	609.6	20.8	105.0	80.0
31130	DN 650	26"	660.4	15.4	105.0	80.0
34867	DN 700	28"	711.2	22.7	105.0	80.0
34868	DN 750	30"	762.0	28.0	105.0	90.0
34869	DN 800	32"	812.8	22.6	105.0	90.0
34871	DN 900	36"	914.4	29.2	120.0	100.0
31138	DN 1000	40"	1016.0	26.5	130.0	110.0

Heavy Duty Pipe Caps

SR 1389

Black and Yellow LDPE



- Reinforced design
- Fit smaller pipe sizes

Part Number	Nominal Diameter	Dimensions (mm)		Colour
		d	H	
12080	-	19.0	12.7	Yellow
12081	1/2"	21.4	17.2	Yellow
12082	-	22.2	17.7	Yellow
12084	-	25.4	22.0	Yellow
50248	-	27.0	25.4	Black
12085	3/4"	27.0	25.4	Yellow
10275	-	31.8	25.4	Yellow
10677	1"	33.4	24.8	Yellow
12086	-	34.1	22.8	Yellow
11356	-	35.0	24.6	Yellow
10989	-	38.0	28.4	Yellow
51061	-	41.3	26.6	Black
11118	-	41.3	26.6	Yellow
60606	1 1/4"	42.9	25.4	Black
12087	1 1/4"	42.9	25.4	Yellow

Part Number	Nominal Diameter	Dimensions (mm)		Colour
		d	H	
11236	-	44.5	26.6	Yellow
11360	-	47.7	28.4	Yellow
51200	1 1/2"	48.3	27.0	Black
11238	1 1/2"	48.3	27.0	Yellow
10146	-	50.8	24.3	Yellow
10834	1 3/4"	54.0	28.4	Yellow
11217	-	57.2	25.4	Yellow
51109	2"	60.3	26.6	Black
10195	2"	60.3	26.6	Yellow
10648	-	63.5	30.4	Yellow
11337	-	70.0	30.0	Yellow
86470	2 1/2"	76.1	31.0	Black
11198	2 1/2"	76.1	31.0	Yellow
11408	-	82.5	31.0	Yellow

Bevel Edge Protectors and Plugs

SR 1360

Bevel Edge Protector - Steel Bevel

Pipe Plug - PE/Flexible PE

- Bevel protector designed for use with pipes from 8" to 120"
- The bevel protector is easy to apply by pushing onto the pipe-end and hammering down the clamping system
- The clamping system will expand and force the protector against the inner pipe surface
- Bevel protector combines with pipe plug in sizes 8" to 64" for optimal protection and pipe closure
- Pipe plug has depth of at least 100 mm to accept crane hook
- The steel bevel protector keeps the pipe plug firmly in position during handling, transportation and storage
- Available with a corrosion inhibitor to protect inside pipe against damage from moisture

We recommend that you contact our office to select the clamping system to fit your requirement.



Figure 1

Steel bevel protector and pipe plug



Figure 2

Steel bevel protector and pipe plug combined together in a pipe-end, sealing the pipe completely



Figure 3

Clamping system of the steel bevel protector



Figure 4

By giving a few taps with a hammer on top of the clamping system the bevel protector expands and forces itself against the inner pipe surface

Part Number	Nominal Pipe Size	Pipe Wall Thickness (mm)	Plug Diameter (mm)	Height (mm)
41023	16"	25.4	355.6	105
41114	16"	12.7	381.0	105
464623	16"	6.4	393.7	200
601482	18"	25.4	406.4	55
601258	18"	19.1	419.1	105
41024	18"	12.7	431.8	105
601134	18"	9.3	438.6	150
464621	18"	6.4	444.5	200
41130	20"	25.4	457.2	105
601257	20"	19.1	469.9	105
41116	20"	12.7	482.6	105
601530	20"	6.4	495.3	105
41140	22"	25.4	508.0	105
41026	22"	12.7	533.4	105
41045	24"	25.4	558.8	105
41027	24"	12.7	584.2	105
44115	26"	25.4	609.6	105
41028	26"	12.7	635.0	105
461580	28"	25.4	660.4	105
41029	28"	12.7	685.8	105
41031	30"	25.4	711.2	105
41030	30"	12.7	736.6	105

Part Number	Nominal Pipe Size	Pipe Wall Thickness (mm)	Plug Diameter (mm)	Height (mm)
461082	32"	25.4	762.0	110
41032	32"	12.7	787.4	105
601267	32"	6.4	800.1	105
44122	34"	25.4	812.8	105
41033	34"	12.7	838.2	105
48215	36"	25.4	863.6	105
41034	36"	12.7	889.0	105
464619	38"	25.4	914.4	200
41035	38"	12.7	939.8	105
461081	40"	25.4	965.2	105
41036	40"	12.7	990.6	105
461080	42"	25.4	1016.0	105
41037	42"	12.7	1041.4	105
601321	44"	25.4	1066.8	105
41038	44"	12.7	1092.2	105
41039	46"	12.7	1143.0	105
461079	48"	25.4	1168.4	105
41072	48"	12.7	1193.8	105
601140	50"	12.7	1244.6	105
41129	52"	12.7	1295.4	105
41125	54"	12.7	1346.2	105
464654	56"	25.4	1371.6	105
41126	56"	12.7	1397.0	105

Face Self-Adhesive Discs

SR 1361

Black Rubber

- Provide full flange face protection
- Ozone and weather resistant
- Withstand temperatures from -15°C to +70°C
- Resistant to petrol, oil and non-oxidisation acids
- Available with holes for internal bore sand blasting
- Standard thickness 1.5mm



Alternative Sizes

Part Number	Disc Diameter (mm)
462878	38.0
48171	47.0
48250	51.0
601437	62.5
600062	70.0
601552	72.0
43267	90.0
48359	92.0
48360	105.0
48235	110.0
601554	124.0
601173	125.0
48363	127.0
552320	152.4
601556	156.0
601398	168.0
600956	180.0
601557	182.0
48370	217.0
48233	223.0
601558	247.0
600967	250.0
48083	255.0
461935	270.0
552322	292.0
601498	300.0
601175	308.0
601559	318.0
48216	325.0
48383	340.0
552324	346.0
601881	356.0
601882	362.0
48134	385.0
552325	406.4
464641	430.0
48197	435.0
601584	438.0
48251	470.0
48392	490.0
48249	535.0
601340	584.0
461941	585.0
552328	622.3
552329	660.4
600115	774.0
600808	780.0
552330	793.8
464642	885.0
464519	914.0
601569	1085.0
462889	1100.0
44010	1170.0
601801	1194.0
552158	1333.0
601802	1359.0
601803	1511.0
601822	2197.0

ANSI

Part Number	Nominal Diameter	Disc Diameter (mm)
48326	1/2"	36.0
48327	3/4"	45.0
48328	1"	54.0
48329	1 1/2"	75.0
48330	2"	95.0
48362	2 1/2"	115.0
48331	3"	130.0
48332	4"	160.0
48333	5"	200.0
48334	6"	220.0
48335	8"	275.0
48336	10"	330.0
48337	12"	390.0
48338	14"	415.0
48339	16"	475.0
48340	18"	540.0
48341	20"	590.0
600049	22"	642.0
48342	24"	700.0
43899	26"	750.0
44003	28"	810.0
464559	30"	857.2
44007	36"	1022.0

DIN

Part Number	Nominal Diameter	Disc Diameter (mm)
48311	DN 10	40.0
48312	DN 15	45.0
48313	DN 20	58.0
48314	DN 25	68.0
48315	DN 32	78.0
48316	DN 40	88.0
48317	DN 50	102.0
48318	DN 65	122.0
48319	DN 80	138.0
48320	DN 100	158.0
48321	DN 125	188.0
48322	DN 150	212.0
48323	DN 200	268.0
48324	DN 250	320.0
48325	DN 300	380.0
48163	DN 350	450.0
48237	DN 400	505.0
464626	DN 500	615.0
464516	DN 600	692.0
461120	DN 800	910.0

Face Protectors

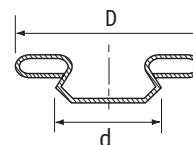
SR 1354

Yellow Polyethylene

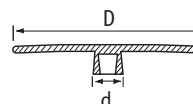
- Protect against dirt, moisture, paint and sand blasting
- Suitable for DIN and ANSI flanges



Type 1



Type 2



Type 3



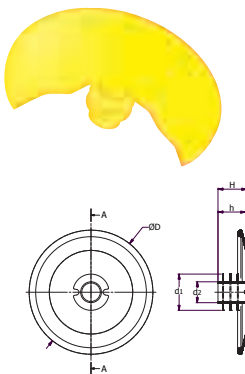
Part Number	Type	Nominal Diameter	Dimensions (mm)		
			D	d	H
31648	2	DN 15 1/2"	45.0	15.8	-
31653	2	DN 20 3/4"	58.0	20.8	-
34325	2	DN 25 1"	68.0	26.0	-
31649	2	DN 32 1 1/4"	78.0	33.5	-
34326	2	DN 40 1 1/2"	88.0	41.5	-
32440	1	DN 50 2"	102.0	49 - 55	-
110295	2	DN 50 2"	103.0	51.0	-
32441	1	DN 65 2 1/2"	122.0	63 - 70	-
32442	1	DN 80 3"	138.0	76 - 83	-
32443	1	DN 100 4"	162.0	100 - 107	-
34335	1	-	165.0	90 - 100	-
32444	1	DN 125 5"	188.0	123 - 132	-
32445	1	DN 150 6"	218.0	149 - 159	-
34336	1	-	240.0	130 - 140	-
34337	1	-	245.0	140 - 150	-
32446	1	DN 200 8"	285.0	196 - 207	-
34338	1	-	310.0	185 - 200	-
32447	1	DN 250 10"	345.0	247 - 260	-
34339	1	-	370.0	220 - 240	-
32448	1	DN 300 12"	410.0	295 - 310	-
32449	1	DN 350 14"	465.0	325 - 341	-
32450	1	DN 400 16"	530.0	374 - 392	-
32451	1	DN 450 18"	570.0	424 - 443	-
32452	1	DN 500 20"	625.0	472 - 494	-
34370	1	DN 600 24"	725.0	570 - 596	-
494283	3	DN 15 1/2"	45.0	19.0	16.5
494284	3	DN 20 3/4"	58.0	24.0	16.5
494285	3	DN 25 1"	70.0	30.0	19.5
494286	3	DN 32 1 1/4"	78.0	39.0	29.5
494287	3	DN 40 1 1/2"	88.0	45.0	29.5
494288	3	DN 50 2"	102.0	56.0	29.5
494289	3	DN 65 2 1/2"	122.0	72.0	34.5
494290	3	DN 80 3"	138.0	85.0	34.5
494291	3	DN 100 4"	163.0	119.0	36.5
494292	3	DN 125 5"	190.0	143.0	36.5
494293	3	DN 150 6"	215.0	170.0	36.5
494294	3	DN 200 8"	270.0	221.0	41.5
494295	3	DN 250 10"	345.0	275.0	41.5
494296	3	DN 300 12"	408.0	325.0	41.5

Full-Face Flange Protectors

SR 1365

Yellow LDPE

- Flexible fins ensure snug fit into bores
- For flanges to DN 2627-2638,150, BS5504 and ANSIB16, 5



Part Number	DIN	Nominal Bore	Dimensions (mm)					Std Pack Qty.
			d2	d1	D	h	H	
552067	DN10	3/8"	6.8	14.2	86.0	20.0	21.0	800
552068	DN15	1/2"	8.5	19.0	90.0	20.0	21.0	500
552069	DN20	3/4"	13.0	24.0	100.0	20.0	21.0	350
552070	DN25	1"	18.0	30.0	110.0	24.0	25.0	300
552071	DN32	1 1/4"	23.0	39.0	136.0	30.0	32.0	200
552072	DN40	1 1/2"	30.0	45.5	146.0	30.0	32.0	200
552073	DN50	2"	40.0	56.5	160.0	30.0	32.0	100
552074	DN65	2 1/2"	53.0	72.5	180.0	34.0	36.0	80
552075	DN80	3"	66.0	85.5	196.0	34.0	36.0	75
552076	DN100	4"	86.0	110.0	216.0	44.0	46.0	50
552077	DN125	5"	110.0	134.0	246.0	44.0	46.0	35
552078	DN150	6"	139.0	163.0	280.0	48.0	50.0	25
552079	DN200	8"	186.0	210.0	336.0	50.0	52.0	16
552080	DN250	10"	237.0	263.0	403.0	50.0	52.0	7
43989	DN 300	12"	284.0	319.0	450.0	-	48.5	10

Flange Covers

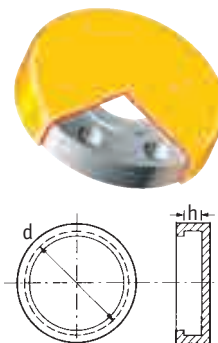
SR 1353

Yellow Flexible Polyethylene

DIN

Part Number	Nominal Diameter	Series Pressure Group (Bar)	Dimensions (mm)	
			d	h
34278	DN 10	6	75.0	10.0
34281		25, 40	90.0	14.0
34279		6	80.0	10.0
34282	DN 15	10, 16	95.0	12.0
110318*		25, 40	95.2	14.2
34301		-	95.0	16.0
110317*	DN 20	6	90.0	12.0
31996		10, 16	105.0	14.0
32259		25, 40	105.0	16.0
110319*	DN 25	6	100.2	12.2
31967		10, 16	115.0	14.0
32260		25, 40	115.0	16.0
32261	DN 32	6, 10	120.0	12.0
31968		-	140.0	14.0
32264		16	140.0	16.0
34303	DN 40	25, 40	140.0	18.0
32262		6	130.0	11.0
32265		10, 16	150.0	13.0
110322*	DN 50	-	150.5	15.0
31969		-	150.5	15.0
34304		25, 40	150.0	17.0
32263	DN 65	6	140.0	11.0
32267		10, 16	165.0	15.0
31970		25, 40	165.0	17.0
32266	DN 80	6	160.0	11.0
31971		10, 16	185.0	15.0
32268		25, 40	185.0	19.0
32269	DN 100	6	190.0	13.0
31972		10, 16	200.0	17.0
32270		25, 40	200.0	21.0
34306	DN 125	-	200.0	24.0
32271		6	210.0	13.0
31973		10, 16	220.0	17.0
34307	DN 150	-	220.0	21.0
34308		-	220.0	24.0
32272		25, 40	235.0	21.0
32273	DN 200	6	240.0	15.0
31921		10, 16	250.0	19.0
31652		-	250.0	25.0
32275	DN 300	25, 40	270.0	23.0
32274		6	265.0	15.0
31915		10, 16	285.0	19.0
34310	DN 400	-	285.0	22.0
34311		-	285.0	24.0
34312		-	285.0	29.0
34283	DN 500	25, 40	300.0	25.0

- Ideal for protecting internally-coated flanges
- Provide complete all-round flange protection
- Cover ANSI B 16.5, DIN 2631-2635 and BS4504
- Easy to fit
- Durable and flexible
- Also protect bolt holes
- Suit all types of flange faces



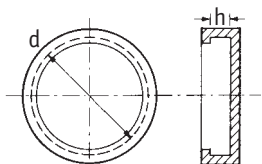
Part Number	Nominal Diameter	Series Pressure Group (Bar)	Dimensions (mm)	
			d	h
34284	DN 175	10, 16	315.0	21.0
31917		25	330.0	25.0
34285		40	350.0	29.0
31916	DN 200	6	320.0	17.0
32310		10, 16	340.0	21.0
34314		-	340.0	24.0
31651	DN 250	-	340.0	32.0
34286		25	360.0	27.0
34288		40	375.0	31.0
34287	DN 300	6	375.0	19.0
34289		10	395.0	23.0
34315		-	395.0	28.0
32311	DN 350	16	405.0	23.0
34290		25	425.0	29.0
34292		40	450.0	35.0
34291	DN 400	6	440.0	18.0
31922		10	445.0	22.0
34316		-	445.0	30.0
32312	DN 500	16	460.0	24.0
31874		25	485.0	30.0
34295		40	515.0	38.0
32320	DN 600	10	505.0	22.0
34296		16	520.0	26.0
34297		6	540.0	18.0
32321	DN 800	10	565.0	22.0
34299		16	580.0	28.0
32276		25	620.0	36.0
32278	DN 1000	40	660.0	46.0
32322		10	670.0	24.0
32281		16	715.0	30.0
32282	DN 1200	25	730.0	40.0
31942		40	749.3	46.0
32307		16	840.0	31.0

* Injection-moulded flange cover

CONTINUED ON NEXT PAGE

Flange Covers *CONTINUED*

SR 1353



ANSI

Part Number	Nominal Diameter	Series Pressure Group (lbs)	Dimensions (mm)	
			d	h
31836	1/2"	150	88.9	11.2
110318*		300/400/600	95.2	14.2
31963		300/400/600	95.2	14.2
34258		900/1500	120.6	22.3
31837	3/4"	150	98.6	12.7
31965		300/400/600	117.3	15.7
34260		300/400/600	133.4	19.0
31896		900/1500	130.0	25.4
110320*	1"	150	108.0	14.2
31938		300/400/600	124.0	17.5
31891		900/1500	149.3	28.4
110321*	1 1/2"	150	127.0	17.5
31793		150	127.0	17.5
31886		300	155.4	20.6
32284		400/600	155.4	22.4
31892	2"	900/1500	177.8	31.7
110323*		150	152.4	19.1
31791		150	152.4	19.1
110324*		300	165.5	22.5
31783	2 1/2"	300	165.5	22.5
32285		400/600	165.1	25.4
32293		900/1500	215.9	38.1
32313		150	177.8	22.4
31888	3"	300	190.5	25.4
31890		400/600	190.5	28.4
31766		150	190.5	23.9
31867		300	209.5	28.4
32286	3 1/2"	400/600	209.5	31.8
32294		900	241.3	38.1
34319		1500	270.0	51.5
34262		150	215.9	23.9
34263	4"	300	228.6	30.2
34264		400/600	228.6	35.1
31763		150	228.6	23.9
31868		300	254.0	31.7
32287	5"	600	273.1	38.1
32291		900	292.1	44.4
34322		2500	356.0	76.0
34265		150	254.0	23.9
34266	6"	300	279.4	35.0
34267		600	330.2	44.5
31760		150	279.4	25.4
31869		300	317.5	36.5
32296	900	600	355.6	47.8
31647		900	381.0	55.6

ANSI continued

Part Number	Nominal Diameter	Series Pressure Group (lbs)	Dimensions (mm)	
			d	h
31870	8"	150	342.9	28.4
34321		-	343.0	33.0
31871		300	381.0	41.1
32298		600	419.1	55.6
32299	10"	900	469.9	63.5
34323		1500	479.0	93.0
34324		2500	551.0	111.0
31872		150	406.4	30.2
31873	12"	300	444.5	47.7
32300		600	508.0	63.5
32303		900	546.1	69.8
31874		150	485.0	30.0
31875	14"	300	520.7	50.8
32301		600	558.8	66.5
32302		900	609.6	79.2
31876		150	533.4	35.1
31847	16"	300	584.2	53.8
34268		600	603.3	69.9
34269		900	641.3	85.8
31877		150	596.9	36.6
31878	18"	300	647.7	57.1
34270		600	685.8	76.2
34271		900	704.8	88.9
31879		150	635.0	39.6
31880	20"	300	711.2	60.4
34272		600	743.0	82.6
34273		900	787.4	101.6
31881		150	698.5	42.9
31882	22"	300	774.7	63.5
34274		600	812.8	88.9
34275		900	857.2	107.9
31942		150	749.3	46.0
31943	24"	150	812.8	47.8
32088		300	914.4	69.8
34276		600	930.0	98.0
34277		900	1041.4	139.7

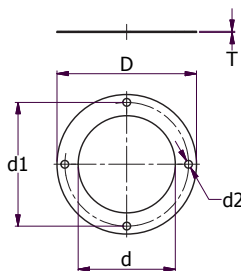
* Injection-moulded flange cover

Flange Gaskets

SR 5764

MP Rubber

- Flanges according to ASA B16,5 with Bolt Holes
- Withstand temperatures from -20°C to +80°C
- Ozone and weather resistant
- Hardness: Shore 70



ANSI- 150 lbs Range

Part Number			Nominal Diameter	Dimensions (mm)					Std Pack Qty
MP Thickness 2mm	MP Thickness 3mm - 1 inlay	MP Thickness 5mm - 1 inlay		I.D. (d)	O.D. (D)	Bolt Circle Diameter (d1)	Bolt Hole size (d2)	Nr of Bolt Holes	
550502	550521	550540	1/2"	21	89	60	16	4	50
550503	550522	550541	3/4"	27	98	70	16	4	50
550504	550523	550542	1"	33	108	79	16	4	50
550505	550524	550543	1 1/4"	42	117	89	16	4	50
550506	550525	550544	1 1/2"	48	127	98	16	4	50
550507	550526	550545	2"	60	152	121	19	4	50
550508	550527	550546	2 1/2"	73	178	140	19	4	50
550509	550528	550547	3"	89	190	152	19	4	50
550510	550529	550548	3 1/2"	102	216	178	19	8	50
550511	550530	550549	4"	114	229	190	19	8	50
550512	550531	550550	5"	141	254	216	22	8	50
550513	550532	550551	6"	168	279	241	22	8	25
550514	550533	550552	8"	219	343	298	22	8	25
550515	550534	550553	10"	273	406	362	25	12	25
550516	550535	550554	12"	324	483	432	25	12	25
550517	550536	550555	14"	356	535	476	29	12	10
550518	550537	550556	16"	406	595	540	29	16	10
550519	550538	550557	18"	457	635	578	33	16	10
550520	550539	550558	20"	510	700	635	33	20	10

ANSI- 300 lbs Range

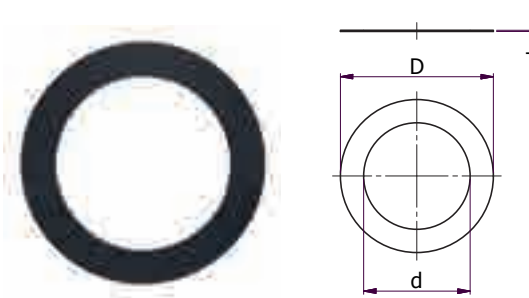
Part Number			Nominal Diameter	Dimensions (mm)					Std Pack Qty
MP Thickness 2mm	MP Thickness 3mm - 1 inlay	MP Thickness 5mm - 1 inlay		I.D. (d)	O.D. (D)	Bolt Circle Diameter (d1)	Bolt Hole size (d2)	Nr of Bolt Holes	
550559	550578	550597	1/2"	21	95	67	16	4	50
550560	550579	550598	3/4"	27	117	83	19	4	50
550561	550580	550599	1"	33	123	89	19	4	50
550562	550581	550600	1 1/4"	42	133	98	19	4	50
550563	550582	550601	1 1/2"	48	155	114	22	4	50
550564	550583	550602	2"	60	165	127	19	8	50
550565	550584	550603	2 1/2"	73	190	149	22	8	50
550566	550585	550604	3"	89	209	168	22	8	50
550567	550586	550605	3 1/2"	102	228	184	22	8	50
550568	550587	550606	4"	114	254	200	22	8	50
550569	550588	550607	5"	141	279	235	22	8	50
550570	550589	550608	6"	168	317	270	22	12	25
550571	550590	550609	8"	219	381	330	25	12	25
550572	550591	550610	10"	273	444	387	29	16	25
550573	550592	550611	12"	324	520	451	32	16	25
550574	550593	550612	14"	356	584	514	32	20	10
550575	550594	550613	16"	406	647	572	35	20	10
550576	550595	550614	18"	457	711	629	35	24	10
550577	550596	550615	20"	510	774	686	35	24	10

Flange Gaskets

SR5764

MP Rubber

- Flanges according to ASA B16,5 NO Bolt Holes
- Withstand temperatures from -20°C to +80°C
- Ozone and weather resistant
- Hardness: Shore 70



ANSI- 150 lbs Range

Part Number			Nominal Diameter	Dimensions (mm)		Std Pack Qty
MP Thickness 2mm	MP Thickness 3mm - 1 inlay	MP Thickness 5mm - 1 inlay		I.D. (d)	O.D. (D)	
550616	550635	550654	1/2"	21	48	50
550617	550636	550655	3/4"	27	57	50
550618	550637	550656	1"	33	67	50
550619	550638	550657	1 1/4"	42	76	50
550620	550639	550658	1 1/2"	48	86	50
550621	550640	550659	2"	60	105	50
550622	550641	550660	2 1/2"	73	124	50
550623	550642	550661	3"	89	137	50
550624	550643	550662	3 1/2"	102	162	50
550625	550644	550663	4"	114	175	50
550626	550645	550664	5"	141	197	50
550627	550646	550665	6"	168	222	25
550628	550647	550666	8"	219	279	25
550629	550648	550667	10"	273	340	25
550630	550649	550668	12"	324	410	25
550631	550650	550669	14"	356	451	10
550632	550651	550670	16"	406	514	10
550633	550652	550671	18"	457	550	10
550634	550653	550672	20"	508	606	10

ANSI- 300 lbs Range

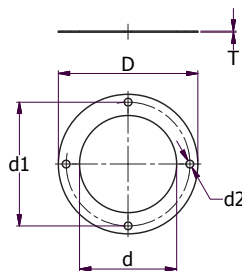
Part Number			Nominal Diameter	Dimensions (mm)		Std Pack Qty
MP Thickness 2mm	MP Thickness 3mm - 1 inlay	MP Thickness 5mm - 1 inlay		I.D. (d)	O.D. (D)	
550673	550692	550711	1/2"	21	54	50
550674	550693	550712	3/4"	27	67	50
550675	550694	550713	1"	33	73	50
550676	550695	550714	1 1/4"	42	83	50
550677	550696	550715	1 1/2"	48	95	50
550678	550697	550716	2"	60	111	50
550679	550698	550717	2 1/2"	73	130	50
550680	550699	550718	3"	89	149	50
550681	550700	550719	3 1/2"	102	165	50
550682	550701	550720	4"	114	181	50
550683	550702	550721	5"	141	216	50
550684	550703	550722	6"	168	251	25
550685	550704	550723	8"	273	362	25
550686	550705	550724	10"	324	422	25
550687	550706	550725	12"	356	486	25
550688	550707	550726	14"	406	540	10
550689	550708	550727	16"	457	597	10
550690	550709	550728	18"	508	654	10
550691	550710	550729	20"	610	775	10

Flange Gaskets

SR 5764

MP Rubber

- Flanges according to DIN 2690, with Bolt Holes
- Withstand temperatures from -20°C to +80°C
- Ozone and weather resistant
- Hardness: Shore 70



DIN - PN 10 Range

Part Number			Nominal Diameter	Dimensions (mm)					Std Pack Qty
MP Thickness 2mm	MP Thickness 3mm - 1 inlay	MP Thickness 5mm - 1 inlay		I.D. (d)	O.D. (D)	Bolt Circle Diameter (d1)	Bolt Hole size (d2)	Nr of Bolt Holes	
550730	550749	550768	DN 15	22	95	65	14	4	50
550731	550750	550769	DN 20	28	105	75	14	4	50
550732	550751	550770	DN 25	35	115	85	14	4	50
550733	550752	550771	DN 32	43	140	100	18	4	50
550734	550753	550772	DN 40	49	150	110	18	4	50
550735	550754	550773	DN 50	61	165	125	18	4	50
550736	550755	550774	DN 65	77	185	145	18	4	50
550737	550756	550775	DN 80	90	200	160	18	8	50
550738	550757	550776	DN 100	115	220	180	18	8	50
550739	550758	550777	DN 125	141	250	210	18	8	50
550740	550759	550778	DN 150	169	285	240	18	8	25
550741	550760	550779	DN 175	195	315	270	22	8	25
550742	550761	550780	DN 200	220	340	295	22	8	25
550743	550762	550781	DN 250	274	395	350	22	12	25
550744	550763	550782	DN 300	325	445	400	22	12	25
550745	550764	550783	DN 350	368	505	460	22	16	25
550746	550765	550784	DN 400	420	565	515	26	16	10
550747	550766	550785	DN 450	470	615	565	26	20	10
550748	550767	550786	DN 500	520	670	620	26	20	10

DIN - PN 16 Range

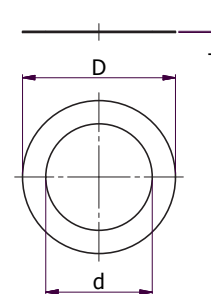
Part Number			Nominal Diameter	Dimensions (mm)					Std Pack Qty
MP Thickness 2mm	MP Thickness 3mm - 1 inlay	MP Thickness 5mm - 1 inlay		I.D. (d)	O.D. (D)	Bolt Circle Diameter (d1)	Bolt Hole size (d2)	Nr of Bolt Holes	
550730	550749	550768	DN 15	22	95	65	14	4	50
550731	550750	550769	DN 20	28	105	75	14	4	50
550732	550751	550770	DN 25	35	115	85	14	4	50
550733	550752	550771	DN 32	43	140	100	18	4	50
550734	550753	550772	DN 40	49	150	110	18	4	50
550735	550754	550773	DN 50	61	165	125	18	4	50
550736	550755	550774	DN 65	77	185	145	18	4	50
550737	550756	550775	DN 80	90	200	160	18	8	50
550738	550757	550776	DN 100	115	220	180	18	8	50
550739	550758	550777	DN 125	141	250	210	18	8	50
550740	550759	550778	DN 150	169	285	240	18	8	25
550741	550760	550779	DN 175	195	315	270	22	8	25
550742	550761	550780	DN 200	220	340	295	22	12	25
551089	551108	551127	DN 250	274	405	355	26	12	25
551090	551109	551128	DN 300	325	460	410	26	12	25
551091	551110	551129	DN 350	368	520	470	26	16	25
551092	551111	551130	DN 400	420	580	525	30	16	10
551093	551112	551131	DN 450	470	640	585	30	20	10
551094	551113	551132	DN 500	520	715	650	33	20	10

Flange Gaskets

SR 5764

MP Rubber

- Flanges according to DIN 2690, NO Bolt Holes
- Withstand temperatures from -20°C to +80°C
- Ozone and weather resistant
- Hardness: Shore 70



DIN - PN 10 Range

MP Thickness 2mm	Part Number MP Thickness 3mm - 1 inlay	MP Thickness 5mm - 1 inlay	Nominal Diameter	Dimensions (mm)		Std Pack Qty
				I.D. (d)	O.D. (D)	
550787	550809	550831	DN 6	10	38	50
550788	550810	550832	DN 8	14	43	50
550789	550811	550833	DN 10	18	46	50
550790	550812	550834	DN 15	22	51	50
550791	550813	550835	DN 20	28	61	50
550792	550814	550836	DN 25	34	71	50
550793	550815	550837	DN 32	43	82	50
550794	550816	550838	DN 40	49	92	50
550795	550817	550839	DN 50	61	107	50
550796	550818	550840	DN 65	77	127	50
550797	550819	550841	DN 80	89	142	50
550798	550820	550842	DN 100	115	162	50
550799	550821	550843	DN 125	141	192	50
550800	550822	550844	DN 150	169	218	25
550801	550823	550845	DN 175	195	248	25
550802	550824	550846	DN 200	220	273	25
550803	550825	550847	DN 250	273	328	25
550804	550826	550848	DN 300	324	378	25
550805	550827	550849	DN 350	368	438	25
550806	550828	550850	DN 400	420	490	10
550807	550829	550851	DN 450	470	540	10
550808	550830	550852	DN 500	520	595	10

DIN - PN 16 Range

MP Thickness 2mm	Part Number MP Thickness 3mm - 1 inlay	MP Thickness 5mm - 1 inlay	Nominal Diameter	Dimensions (mm)		Std Pack Qty
				I.D. (d)	O.D. (D)	
550787	550809	550831	DN 6	10	38	50
550788	550810	550832	DN 8	14	43	50
550789	550811	550833	DN 10	18	46	50
550790	550812	550834	DN 15	22	51	50
550791	550813	550835	DN 20	28	61	50
550792	550814	550836	DN 25	35	71	50
550793	550815	550837	DN 32	43	82	50
550794	550816	550838	DN 40	49	92	50
550795	550817	550839	DN 50	61	107	50
550796	550818	550840	DN 65	77	127	50
550797	550819	550841	DN 80	89	142	50
550798	550820	550842	DN 100	115	162	50
550799	550821	550843	DN 125	141	192	50
550800	550822	550844	DN 150	169	218	25
550801	550823	550845	DN 175	195	248	25
550802	550824	550846	DN 200	220	273	25
550866	550885	550904	DN 250	273	330	25
550867	550886	550905	DN 300	324	385	25
550868	550887	550906	DN 350	368	445	25
550869	550888	550907	DN 400	420	497	10
550870	550889	550908	DN 450	470	557	10
550871	550890	550909	DN 500	520	618	10

Flange Protection Disc

SR 1172

PolyCor™ Corrugated LDPE

- Provides simple, cost-effective protection for flanges
- Covers full flange face - applied by strapping cable ties through bolt holes
- Wide range covers variety of sizes and pressure ratings
- DIN Flanges DN 10 to DN 600 - Pressure Groups PN 6, 10, 16, 25 and 40
- ANSI Flanges 1/2" to 32" - Pressure Groups 150, 300, 600 and 900 lbs



DIN - PN 6 Range

Part Number	Nominal Diameter	Dimensions (mm)			Std Pack Qty	Cable Tie Part No.
		Outside Diameter	Bolt Circle Diameter	Bolt Hole Size		
491795	DN 10	75.0	50.0	11.0	50	460223
491796	DN 15	80.0	55.0	11.0	50	460223
491797	DN 20	90.0	65.0	11.0	50	460223
491798	DN 25	100.0	75.0	11.0	50	460223
491799	DN 32	120.0	90.0	14.0	50	460223
491800	DN 40	130.0	100.0	14.0	50	460223
491801	DN 50	140.0	110.0	14.0	50	460223
491802	DN 65	160.0	130.0	14.0	50	460223
491803	DN 80	190.0	150.0	18.0	50	460223
491804	DN 100	210.0	170.0	18.0	50	460223
491805	DN 125	240.0	200.0	18.0	50	460223
491806	DN 150	265.0	225.0	18.0	25	460223
491807	DN 200	320.0	280.0	18.0	25	460223
491808	DN 250	375.0	335.0	18.0	25	460223
491809	DN 300	440.0	395.0	22.0	25	460223
491810	DN 350	490.0	445.0	22.0	25	460223
491811	DN 400	540.0	495.0	22.0	10	460223
491812	DN 500	645.0	600.0	22.0	10	460223
491813	DN 600	755.0	705.0	24.0	10	460223

DIN - PN 10 Range

Part Number	Nominal Diameter	Dimensions (mm)			Std Pack Qty	Cable Tie Part No.
		Outside Diameter	Bolt Circle Diameter	Bolt Hole Size		
491814	DN 10	90.0	60.0	14.0	50	460223
491815	DN 15	95.0	65.0	14.0	50	460223
491816	DN 20	105.0	75.0	14.0	50	460223
491817	DN 25	115.0	85.0	14.0	50	460223
491818	DN 32	140.0	100.0	18.0	50	460223
491819	DN 40	150.0	110.0	18.0	50	460223
491820	DN 50	165.0	125.0	18.0	50	460223
491821	DN 65	185.0	145.0	18.0	50	460223
491822	DN 80	200.0	160.0	18.0	50	460223
491823	DN 100	220.0	180.0	18.0	50	460223
491824	DN 125	250.0	210.0	18.0	50	460223
491825	DN 150	285.0	240.0	22.0	25	460223
491826	DN 200	340.0	295.0	22.0	25	460223
491827	DN 250	395.0	350.0	22.0	25	460223
491828	DN 300	445.0	400.0	22.0	25	460223
491829	DN 350	505.0	460.0	22.0	25	460223
491830	DN 400	565.0	515.0	26.0	10	460223
491831	DN 500	670.0	620.0	26.0	10	460223
491832	DN 600	780.0	725.0	27.0	10	460224

DIN - PN 16 Range

Part Number	Nominal Diameter	Dimensions (mm)			Std Pack Qty	Cable Tie Part No.
		Outside Diameter	Bolt Circle Diameter	Bolt Hole Size		
491814	DN 10	90.0	60.0	14.0	50	460223
491815	DN 15	95.0	65.0	14.0	50	460223
491816	DN 20	105.0	75.0	14.0	50	460223
491817	DN 25	115.0	85.0	14.0	50	460223
491818	DN 32	140.0	100.0	18.0	50	460223
491819	DN 40	150.0	110.0	18.0	50	460223
491820	DN 50	165.0	125.0	18.0	50	460223
491821	DN 65	185.0	145.0	18.0	50	460223
491822	DN 80	200.0	160.0	18.0	50	460223
491823	DN 100	220.0	180.0	18.0	50	460223
491824	DN 125	250.0	210.0	18.0	50	460223
491825	DN 150	285.0	240.0	22.0	25	460223
492142	DN 200	340.0	295.0	22.0	25	460223
492143	DN 250	405.0	355.0	26.0	25	460223
492144	DN 300	460.0	410.0	26.0	25	460223
492145	DN 350	520.0	470.0	26.0	10	460223
492146	DN 400	580.0	525.0	30.0	10	460223
492147	DN 500	715.0	650.0	33.0	10	460224
492148	DN 600	840.0	770.0	33.0	10	460224

DIN - PN 25 Range

Part Number	Nominal Diameter	Dimensions (mm)			Std Pack Qty	Cable Tie Part No.
		Outside Diameter	Bolt Circle Diameter	Bolt Hole Size		
491814	DN 10	90.0	60.0	14.0	50	460223
491815	DN 15	95.0	65.0	14.0	50	460223
491816	DN 20	105.0	75.0	14.0	50	460223
491817	DN 25	115.0	85.0	14.0	50	460223
491818	DN 32	140.0	100.0	18.0	50	460223
491819	DN 40	150.0	110.0	18.0	50	460223
491820	DN 50	165.0	125.0	18.0	50	460223
492149	DN 65	185.0	145.0	18.0	50	460223
492150	DN 80	200.0	160.0	18.0	50	460223
492151	DN 100	235.0	190.0	22.0	50	460223
492152	DN 125	270.0	220.0	26.0	25	460223
492153	DN 150	300.0	250.0	26.0	25	460223
492154	DN 200	360.0	310.0	26.0	25	460224
492155	DN 250	425.0	370.0	30.0	25	460224
492156	DN 300	485.0	430.0	30.0	25	461183
492157	DN 350	555.0	490.0	33.0	10	461183
492158	DN 400	620.0	550.0	36.0	10	461183
492159	DN 500	730.0	660.0	36.0	10	461184
492160	DN 600	845.0	770.0	36.0	10	461184

CONTINUED ON NEXT PAGE

Flange Protection Disc *CONTINUED*

SR 1172



Cable ties fastened through bolt holes secure disc to flange

DIN - PN 40 Range

Part Number	Nominal Diameter	Dimensions (mm)			Std Pack Qty	Cable Tie Part No.
		Outside Diameter	Bolt Circle Diameter	Bolt Hole Size		
491814	DN 10	90.0	60.0	14.0	50	460223
491815	DN 15	95.0	65.0	14.0	50	460223
491816	DN 20	105.0	75.0	14.0	50	460223
491817	DN 25	115.0	85.0	14.0	50	460223
491818	DN 32	140.0	100.0	18.0	50	460223
491819	DN 40	150.0	110.0	18.0	50	460223
491820	DN 50	165.0	125.0	18.0	50	460223
492149	DN 65	185.0	145.0	18.0	50	460223
492150	DN 80	200.0	160.0	18.0	50	460223
492151	DN 100	235.0	190.0	22.0	50	460223
492152	DN 125	270.0	220.0	26.0	25	460223
492153	DN 150	300.0	250.0	26.0	25	460223
492161	DN 200	375.0	320.0	30.0	25	460224
492162	DN 250	450.0	385.0	33.0	25	461183
492163	DN 300	515.0	450.0	33.0	10	461183
492164	DN 350	580.0	510.0	36.0	10	461183
492165	DN 400	660.0	585.0	39.0	10	461184
492166	DN 500	755.0	670.0	42.0	10	461184

ANSI - 150 lbs Range

Part Number	Nominal Diameter	Dimensions (mm)			Std Pack Qty	Cable Tie Part No.
		Outside Diameter	Bolt Circle Diameter	Bolt Hole Size		
491700	1/2"	88.9	60.3	15.9	50	460223
491701	3/4"	98.4	69.9	15.9	50	460223
491702	1"	108.0	79.4	15.9	50	460223
491703	1 1/4"	117.5	88.9	15.9	50	460223
491704	1 1/2"	127.0	98.4	15.9	50	460223
491705	2"	152.4	120.7	19.1	50	460223
491706	2 1/2"	177.8	139.7	19.1	50	460223
491707	3"	190.5	152.4	19.1	50	460223
491708	3 1/2"	215.9	177.8	19.1	50	460223
491709	4"	228.6	190.5	19.1	50	460223
491710	5"	254.0	215.9	22.2	50	460223
491711	6"	279.4	241.3	22.2	25	460223
491712	8"	342.9	298.5	22.2	25	460223
491713	10"	406.4	362.0	25.4	25	460223
491714	12"	482.6	431.8	25.4	25	460223
491715	14"	533.4	476.3	28.6	10	460223
491716	16"	596.9	539.8	28.6	10	460224
491717	18"	635.0	577.9	31.8	10	460224
491718	20"	698.5	635.0	31.8	10	460224
491719	22"	749.3	698.5	34.9	10	460224
491720	24"	812.8	743.0	34.9	10	460224
491721	26"	870.0	806.5	34.9	10	460224
491722	28"	927.1	863.6	34.9	10	460224
491723	30"	984.3	914.4	34.9	10	461183
491724	32"	1060.5	977.9	41.3	10	461183
491725	34"	1111.3	1028.7	41.3	10	461183
491726	36"	1168.4	1085.9	41.3	10	461183

ANSI - 300 lbs Range

Part Number	Nominal Diameter	Dimensions (mm)			Std Pack Qty	Cable Tie Part No.
		Outside Diameter	Bolt Circle Diameter	Bolt Hole Size		
491727	1/2"	95.3	66.7	15.9	50	460223
491728	3/4"	117.5	82.6	19.1	50	460223
491729	1"	123.8	88.9	19.1	50	460223
491730	1 1/4"	133.4	98.4	19.1	50	460223
491731	1 1/2"	155.6	114.3	22.2	50	460223
491732	2"	165.1	127.0	19.1	50	460223
491733	2 1/2"	190.5	149.2	22.2	50	460223
491734	3"	209.6	168.3	22.2	50	460223
491735	3 1/2"	228.6	184.2	22.2	50	460223
491736	4"	254.0	200.0	22.2	50	460223
491737	5"	279.4	235.0	22.2	25	460223
491738	6"	317.5	269.9	22.2	25	460223
491739	8"	381.0	330.2	25.4	25	460224
491740	10"	444.5	387.4	28.6	25	460224
491741	12"	520.7	450.9	31.8	10	460224
491742	14"	584.2	514.4	31.8	10	461183
491743	16"	647.7	571.5	34.9	10	461183
491744	18"	711.2	628.7	34.9	10	461183
491745	20"	774.7	685.8	34.9	10	461183
491746	22"	838.2	743.0	41.3	10	461184
491747	24"	914.4	812.8	41.3	10	461184
491748	26"	971.6	876.3	44.5	10	461184
491749	28"	1035.1	939.8	44.5	10	461184
491750	30"	1092.2	997.0	47.6	10	461185
491751	32"	1149.4	1054.1	50.8	10	461185
491752	34"	1206.5	1104.9	50.8	10	461185

ANSI - 600 lbs Range

Part Number	Nominal Diameter	Dimensions (mm)			Std Pack Qty	Cable Tie Part No.
		Outside Diameter	Bolt Circle Diameter	Bolt Hole Size		
491727	1/2"	95.3	66.7	15.9	50	460223
491728	3/4"	117.5	82.6	19.1	50	460223
491729	1"	123.8	88.9	19.1	50	460223
491730	1 1/4"	133.4	98.4	19.1	50	460223
491731	1 1/2"	155.6	114.3	22.2	50	460223
491732	2"	165.1	127.0	19.1	50	460223
491733	2 1/2"	190.5	149.2	22.2	50	460223
491734	3"	209.6	168.3	22.2	50	460223
491753	3 1/2"	228.6	184.2	22.2	50	460223
491754	4"	273.1	215.9	25.4	25	460224
491755	5"	330.2	266.7	28.6	25	460224
491756	6"	355.6	292.1	28.6	25	460224
491757	8"	419.1	349.3	31.8	25	461183
491758	10"	508.0	431.8	34.9	25	461183
491759	12"	558.8	489.0	34.9	10	461183
491760	14"	590.6	527.1	38.1	10	461183
491761	16"	685.8	603.3	41.3	10	461184
491762	18"	743.0	654.1	44.5	10	461184
491763	20"	812.8	723.9	44.5	10	461185
491764	22"	870.0	777.9	44.5	10	461185
491765	24"	939.8	838.2	50.8	10	461185
491766	26"	1016.0	914.4	50.8	10	461186
491767	28"	1073.2	965.2	54.0	10	461186
491768	30"	1130.3	1022.4	54.0	10	461187
491769	32"	1193.8	1079.5	60.3	10	461187

Flange Protection Disc *CONTINUED*

SR 1172

ANSI - 900 lbs Range

Part Number	Nominal Diameter	Dimensions (mm)			Std Pack Qty	Cable Tie Part No.
		Outside Diameter	Bolt Circle Diameter	Bolt Hole Size		
491770	1/2"	120.7	82.6	22.2	50	460223
491771	3/4"	130.2	88.9	22.2	50	460223
491772	1"	149.2	101.6	25.4	50	460223
491773	1 1/4"	158.8	123.8	25.4	50	460223
491774	1 1/2"	177.8	123.8	28.6	50	460223
491775	2"	215.9	165.1	25.4	50	460224
491776	2 1/2"	244.5	190.5	28.6	50	460224
491777	3"	241.3	190.5	25.4	50	460224
491778	4"	292.1	235.0	31.8	25	460224
491779	5"	349.3	279.4	34.9	25	461183
491780	6"	381.0	317.5	31.8	25	461183
491781	8"	469.9	393.7	38.1	25	461183
491782	10"	546.1	469.9	38.1	10	461183
491783	12"	609.6	533.4	38.1	10	461184
491784	14"	641.4	558.8	41.3	10	461184
491785	16"	704.9	616.0	44.5	10	461185
491786	18"	787.4	685.8	50.8	10	461185
491787	20"	857.3	749.3	54.0	10	461186
491788	24"	1041.4	901.7	66.7	10	461188
491789	26"	1085.9	952.5	73.0	10	461189
491790	28"	1168.4	1022.4	79.4	10	461190

SAE High-Pressure Flange Protectors

SR 1076

Polyethylene



3000 Series - Blue, 6000 Series - Red

Part Number	Nominal Diameter	Series Pressure Group (lbs)
34371	1/2"	3000
498754	1/2"	6000
34372	3/4"	3000
34382	3/4"	6000
34373	1"	3000
34383	1"	6000
34374	1 1/4"	3000
34384	1 1/4"	6000
34375	1 1/2"	3000
34385	1 1/2"	6000
34376	2"	3000
34386	2"	6000
34377	2 1/2"	3000
498751	3"	3000
498750	3 1/2"	3000
498752	4"	3000
498753	5"	3000

Flange Protectors

SR 1355

Black LDPE



Part Number	Nominal Diameter	Series Pressure Group (lbs)
43607*	1/2"	150
34352	1/2"	300/600
498759	1/2"	900
43608*	3/4"	150
34353	3/4"	300/600
498765	3/4"	900
43609*	1"	150
34354	1"	300/600
498760	1"	900
34343	1 1/4"	150
34355	1 1/4"	300/600
498758	1 1/4"	900
43610*	1 1/2"	150
34356	1 1/2"	300/600
498757	1 1/2"	900
43611*	2"	150
39701	2"	300/600
498764	2"	900
43612*	2 1/2"	150
34358	2 1/2"	300/600
498763	2 1/2"	900
43613*	3"	150
34359	3"	300/600
498766	3"	900
43614*	4"	150
34361	4"	300
498773	4"	600
498767	4"	900
43615*	6"	150
34362	6"	300
498774	6"	600
498768	6"	900
43616*	8"	150
498770	8"	300
498775	8"	600
498769	8"	900
43617*	10"	150
498771	10"	300
498755	10"	600
498761	10"	900
43618*	12"	150
498772	12"	300
498756	12"	600
498762	12"	900

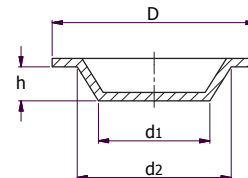
* Variations in style - give protection to flange face and area surrounding bolt holes.

Raised-Face Protector Plugs

Polyethylene

Black

- Meets ANSI/ASME B16.5 Specifications
- Protects petroleum, gas and water type valve flanges
- Protects raised machine face and pipe interior from dirt and moisture during shot and sandblasting operations
- Bolt holes are not covered by flange plugs
- Tapered plug design fits snugly into the pipe's interior
- Requires no fasteners



Part Number	Nominal Pipe Size	Dimensions(mm)				Std Pack Qty
		d1	d2	D	h	
FPR1A	1	28	29.4	52.8	9.5	2000
FPR2A	2	52.1	52.7	96.6	11.2	400
FPR2-1/2A	2-1/2	63.2	63.8	109.6	12.2	400
FPR3A	3	77	79	132	18.5	450
FPR4A	4	101.5	104	166.4	23.5	250
FPR5A	5	126.7	129	189.9	27.2	175
FPR6A	6	151.1	153.7	223.8	32.1	100
FPR8A	8	203.2	205	279.9	32.4	70
FPR10A	10	253.9	257.8	328.3	33.8	50
FPR12A	12	305.1	308.7	386.5	33.8	35

Adhesive Peel & Stick Full-Face Protectors

Polyethylene

Black

- Meets ANSI B16.5 and ASME B16.47 specification
- 150 lb rating
- Adhesive backed, peel and stick design
- Full-faced O.D flange protection
- Special adhesive bonds tightly and leaves no residue under normal conditions
- Requires no fasteners



Part Number	Nominal Pipe Size (Ins)	O.D (mm)	Std Pack Qty
PG150-1/2A	1/2	88.9	50
PG150-3/4A	3/4	98.4	25
PG150-1A	1	108.0	50
PG150-1-1/4A	1-1/4	117.5	50
PG150-1-1/2A	1-1/2	127.0	50
PG150-2A	2	152.4	50
PG150-2-1/2A	2-1/2	177.8	50
PG150-3A	3	190.5	50
PG150-3-1/2A	3-1/2	215.9	25
PG150-4A	4	228.6	50
PG150-5A	5	254.0	50

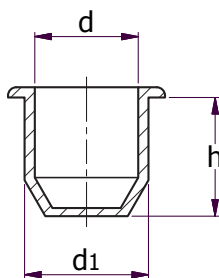
Part Number	Nominal Pipe Size (Ins)	O.D (mm)	Std Pack Qty
PG150-6A	6	279.4	25
PG150-8A	8	342.9	25
PG150-10A	10	406.4	25
PG150-12A	12	482.6	25
PG150-14A	14	533.4	25
PG150-16A	16	596.9	25
PG150-18A	18	635.0	25
PG150-20A	20	698.5	10
PG150-24A	24	812.8	10
PG150-30A	30	984.3	10
PG150-36A	36	1168.4	10

Flange Protector Retainer Plugs

PVC

Black

- Used to secure Flange Protection Discs (see page 123 and 124)



Part Number	To Fit Bolt Hole	Dimensions (mm)			Std Pack Qty
		d1	d	h	
FLS005B	5/8	16.3	15.9	28.7	3000
FLS010B	3/4	19.7	19.2	28.7	2000
FLS015B	7/8	22.9	22.4	30.5	2500
FLS020B	1	25.9	25.7	34.8	1500
FLS025B	1-1/8	29.6	28.8	35.1	1000
FLS030B	1-1/4	32.4	32.0	37.8	1000
FLS035B	1-3/8	35.8	35.3	44.2	750
FLS040B	1-1/2	39.2	38.4	43.9	750
FLS045B	1-5/8	42.3	41.8	43.9	500
FLS050B	1-3/4	45.0	44.5	43.2	400
FLS055B	1-7/8	48.4	47.6	50.8	300
FLS060B	2	51.7	50.8	50.8	250
FLS065B	2-1/8	54.9	54.0	50.8	200
FLS070B	2-3/8	61.2	60.3	54.1	100
FLS075B	2-5/8	67.6	66.7	54.1	50
FLS080B	3-5/8	93.0	92.1	54.1	50



WE ARE HERE TO HELP...

Our Customer Service advisors are friendly, knowledgeable, and ready to help you find the right product for your application.

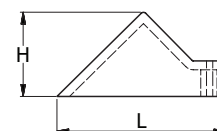
Call 0845 758 5070

Pipe Chock

SR 1178

LDPE Orange

- Pipe chocks are used to help secure pipes during transit and storage
- Nails are included with the pipe chocks



Part Number	Dimensions (mm)			Std Pack Qty	
	W	L	H	Chock	Nail
498748	69.9	114.3	50.8	50	100
498749	88.9	203.2	76.2	20	60