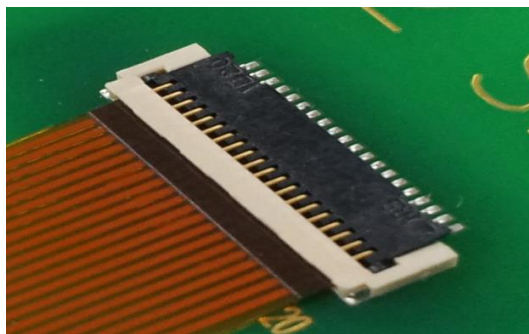


HRS

TF12 Series

0.5mm Pitch, 1.0mm Height, Single Sided Lead, Bottom Contact, Back Flip(Front Access Type), FPC Connector

**Best Selling
Compact Size
FPC Connector**

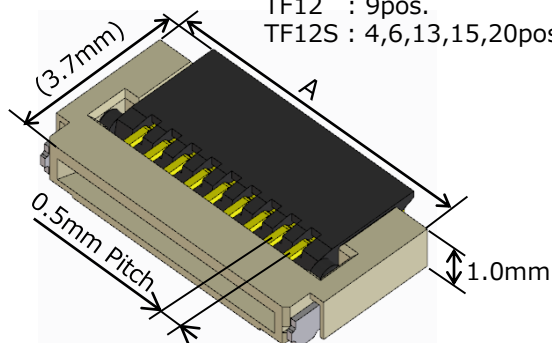
◆ Features

1. Space saving
 - 0.5mm Pitch, 3.9mm Mounting Depth, 1.0mm Height
2. Back flip design (Front Access Type)
 - Actuator is closed when mounted on board to prevent damage during delivery.
3. High reliability
 - High FPC retention force with FPC side catcher design
 - Solder wicking and flux penetration prevention design
4. Environment compliance
 - RoHS compliant, Halogen-free product*¹

*¹ This product satisfies halogen free requirements defined as 900 ppm maximum chlorine, 900 ppm maximum bromine, and 1500 ppm maximum total of chlorine and bromine.

◆ Dimensions

* Variations
TF12 : 9pos.
TF12S : 4,6,13,15,20pos.



◆ Specifications

Contact Resistance* ²	100mΩ Max.
Withstanding Voltage	AC 150V for 1 minute
Insulation Resistance	500MΩ Min. (DC 100V)
Rated Current	0.5A
Rated Voltage	AC/DC 50V
FPC thickness	0.2±0.03mm

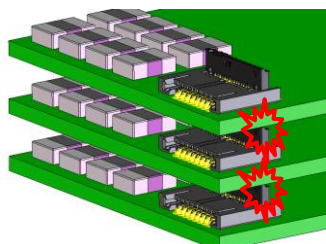
*² FPC resistance is included.

Pos.	4	6	9	13	15	20
A(mm)	4.2	5.2	6.7	8.7	9.7	12.2

◆ Back Flip Design (Front Access Type)

Actuator is closed and mounted on board during delivery to prevent damage.

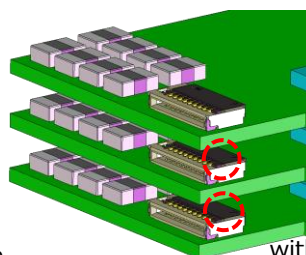
Conventional Back Flip



Connector is mounted with the actuator in an opened state.

⇒ **Actuator might be damaged**

TF12 Series (Front Access Type)



Connector is mounted with the actuator in a closed state

⇒ **Prevents actuator damage**

※Specifications herein are subject to change without notice. Contact Hirose for latest specifications, drawings or availabilities.