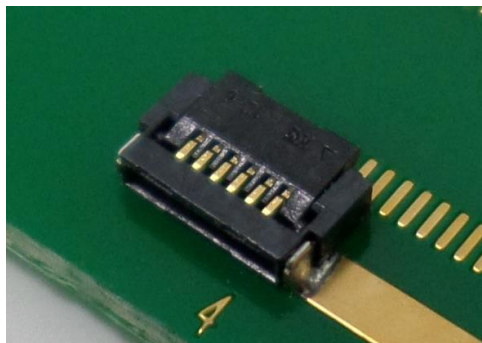




TF13BA Series

0.4mm Pitch, 0.9mm Height, Single Sided Lead, Bottom Contact, Back Flip(Front Access Type), FPC Connector



Short Mounting Depth 3.0mm !!

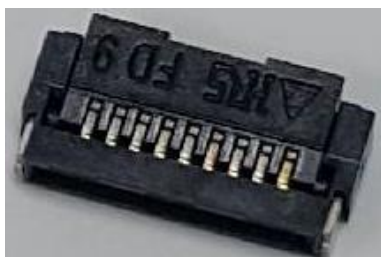
◆ Features

1. Space saving
 - 0.4mm Pitch, 3.0mm Mounting depth, 0.9mm Height
2. Back flip design (Front Access Type)
 - Actuator is closed when mounted on board to prevent damage during delivery.
3. High reliability
 - High FPC retention force with FPC side-catcher design
 - Solder wicking and flux penetration prevention
4. Environment compliance
 - RoHS compliant, Halogen-free product*1

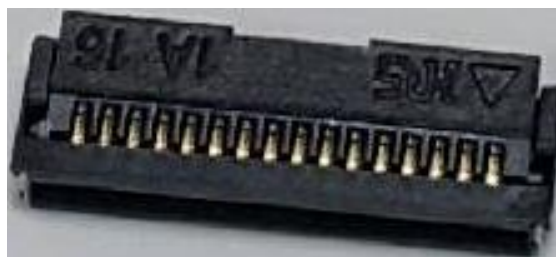
*1 This product satisfies halogen free requirements defined as 900 ppm maximum chlorine, 900 ppm maximum bromine, and 1500 ppm maximum total of chlorine and bromine.

◆ TF13BA Series variations

TF13BA Series



TF13BSA Series



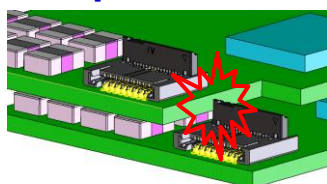
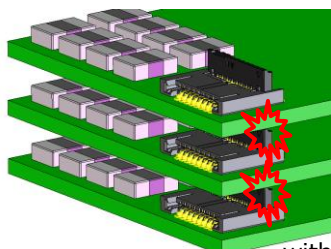
Variation	No. of contact	Color of case	Length
TF13BA	6, 9, 10 pos.	Black	Pitch × (N*2-1) + 2.2 mm
TF13BSA	14, 16, 18, 20 pos.	Black	Pitch × (N*2-1) + 1.8 mm

*2 N is No. of contact.

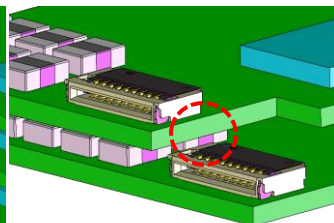
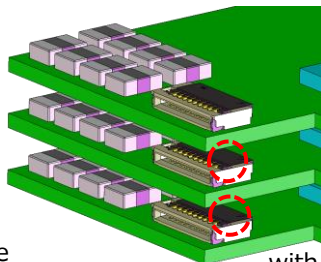
◆ Back Flip Design (Front Access Type)

Actuator is closed and mounted on board during delivery to prevent damage

Conventional Back Flip Connector **TF13BA Series (Front Access Type)**



Connector is mounted with the actuator in an opened state



Connector is mounted with the actuator in a closed state

⇒ **Actuator might be damaged**

⇒ **Prevents actuator damage**

※Specifications herein are subject to change without notice. Contact Hirose for latest specifications, drawings or availabilities.