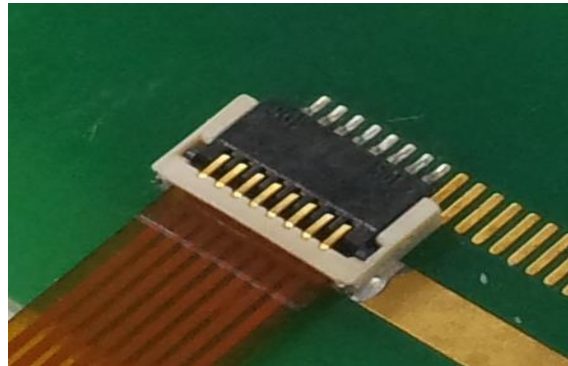




# TF29 Series

0.4mm Pitch, 0.75mm Height, Single Sided Lead, Bottom Contact, Back Flip(Front Access Type), FPC Connector



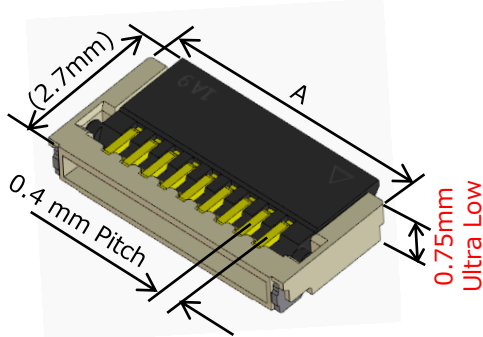
**Ultra Low Profile**  
**0.75 mm**

## ◆ Features

1. Space saving
  - 0.4mm Pitch , 3.0mm Mounting depth, 0.75mm Height
2. High reliability
  - Actuator is closed when mounted on board to prevent damage during delivery.
  - High FPC retention force with FPC side-catcher design
3. User-friendly design
  - Fully enclosed molded structure enables flexible PCB patterning
4. Environment compliance
  - RoHS compliant, Halogen-free product\*1

\*1 This product satisfies halogen free requirements defined as 900 ppm maximum chlorine, 900 ppm maximum bromine, and 1500 ppm maximum total of chlorine and bromine.

## ◆ Dimensions



Pos.	8	9	13
A(mm)	4.6	5.0	6.6

## ◆ Specifications

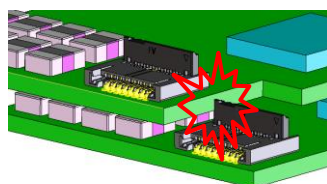
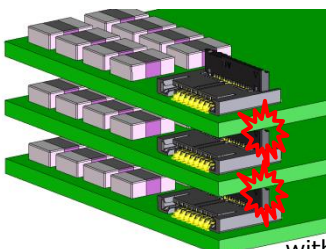
<b>Contact Resistance*2</b>	100mΩ Max.
<b>Withstanding Voltage</b>	150V AC for 1 minute
<b>Insulation Resistance</b>	500MΩ Min. (DC 100V)
<b>Rated Current</b>	0.5A
<b>Rated Voltage</b>	50V AC/DC
<b>FPC Thickness</b>	0.12±0.02mm

\*2 FPC resistance is included.

## ◆ Back Flip Design (Front Access Type)

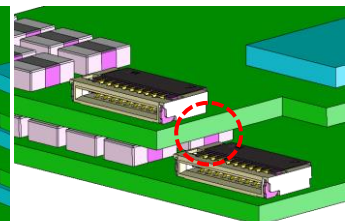
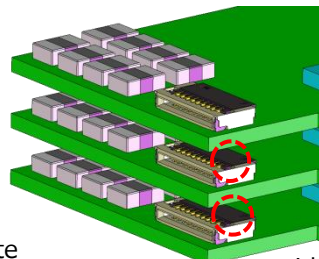
Actuator is closed and mounted on board during delivery to prevent damage.

**Conventional Back Flip Connector**    **TF29 Series (Front Access Type)**



Connector is mounted with the actuator in an opened state

⇒ **Actuator might be damaged**



Connector is mounted with the actuator in a closed state

⇒ **Prevents actuator damage**

※Specifications herein are subject to change without notice. Contact Hirose for latest specifications, drawings or availabilities.