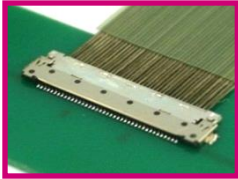


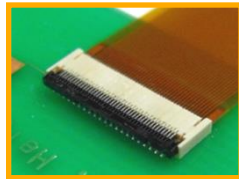
Hirose's Connectors for Note PC

- 1. LCD Connection
- 2. Touch Panel Connection

Micro Coaxial Connector

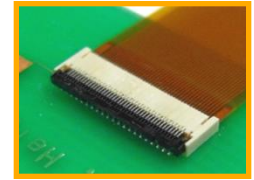


FPC Connector (1-Piece)



- 5. Speaker/Microphone /Fan Connection

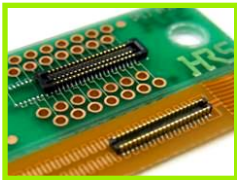
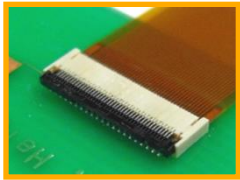
FPC Connector (1-Piece)



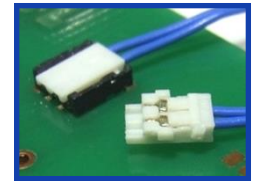
- 3. Module Connection (Incl. HDD)

FPC Connector (1-Piece)

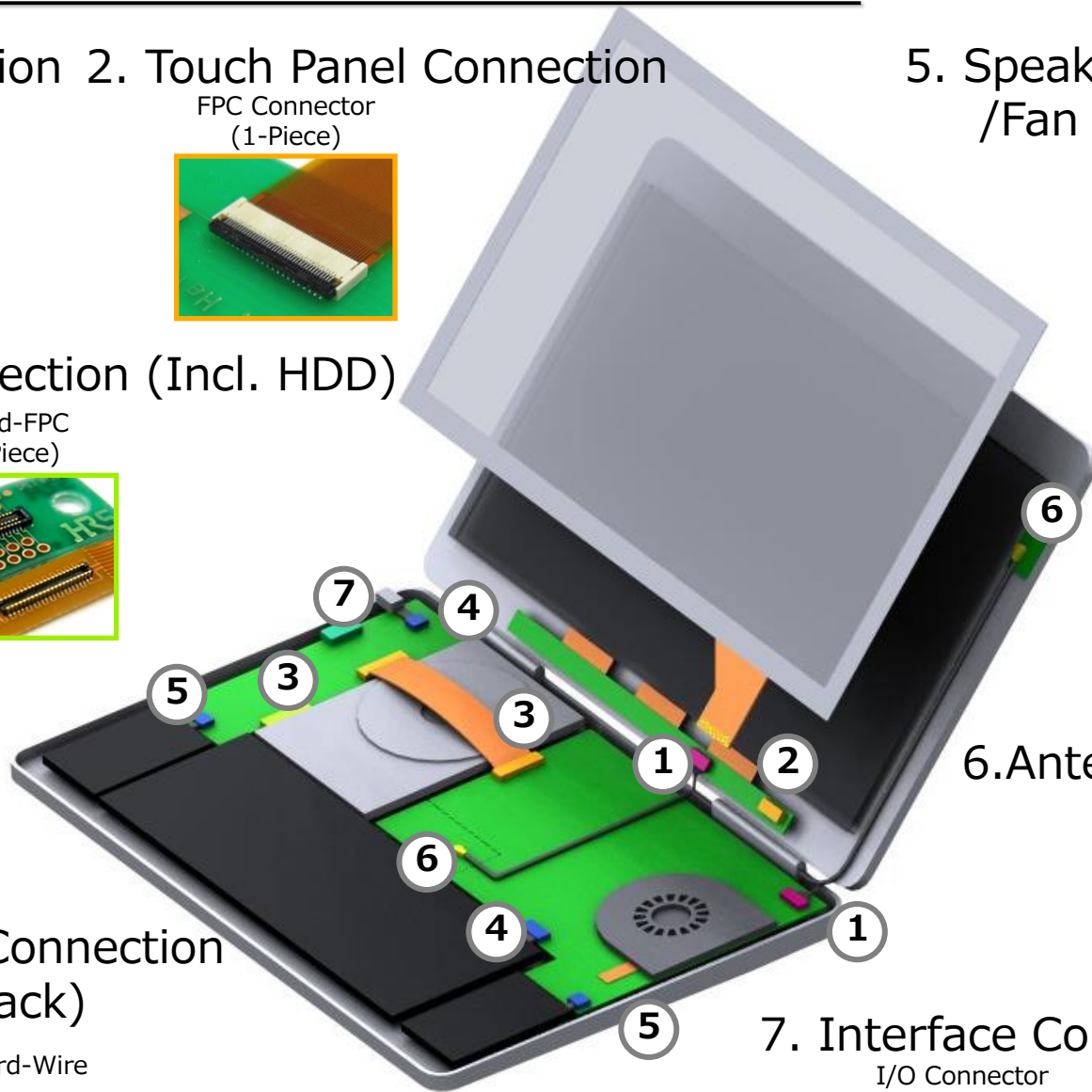
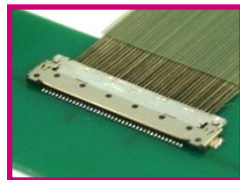
Board-FPC (2-Piece)



Board-Wire

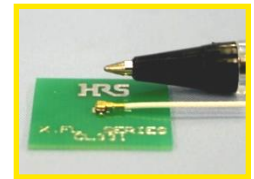


Micro Coaxial Connector



- 6. Antenna Connection

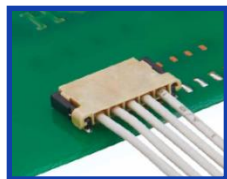
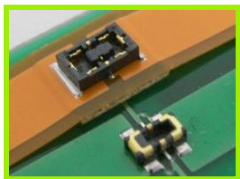
Miniature RF Connector



- 4. High Power Connection (Battery/DC Jack)

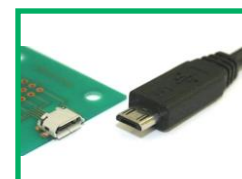
Board-FPC (2-Piece)

Board-Wire



- 7. Interface Connection

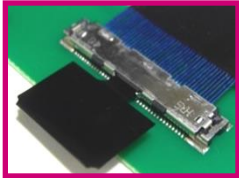
I/O Connector



1. Connectors for LCD Connection

Micro Coaxial Connector

DF80



USB Type C
LVDS
eDP

Space saving,
User-friendly operation
Vertical Mating
Pitch: 0.5mm
Mated Height: 1.72mm
Mated Depth: 5.1mm
Pin Counts: 30, 40, 45, 50pos.
AWG wire: 40-46
(Discrete: 32, 36AWG wire, ϕ 0.5mm Max.)
Rated Current: 0.1-0.5A

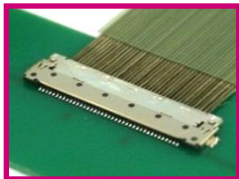
DF81



USB Type C
LVDS
eDP

Space saving with rotary latch
Horizontal Mating
Pitch: 0.4mm
Mated Height: 0.9mm
Mated Depth: 4.4mm
Pin Counts: 30, 40, 50pos.
AWG wire: 36-46
(Discrete: 34-40AWG wire, ϕ 0.4mm Max.)
Rated Current: 0.1-0.8A

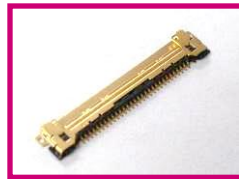
DF49



LVDS
eDP

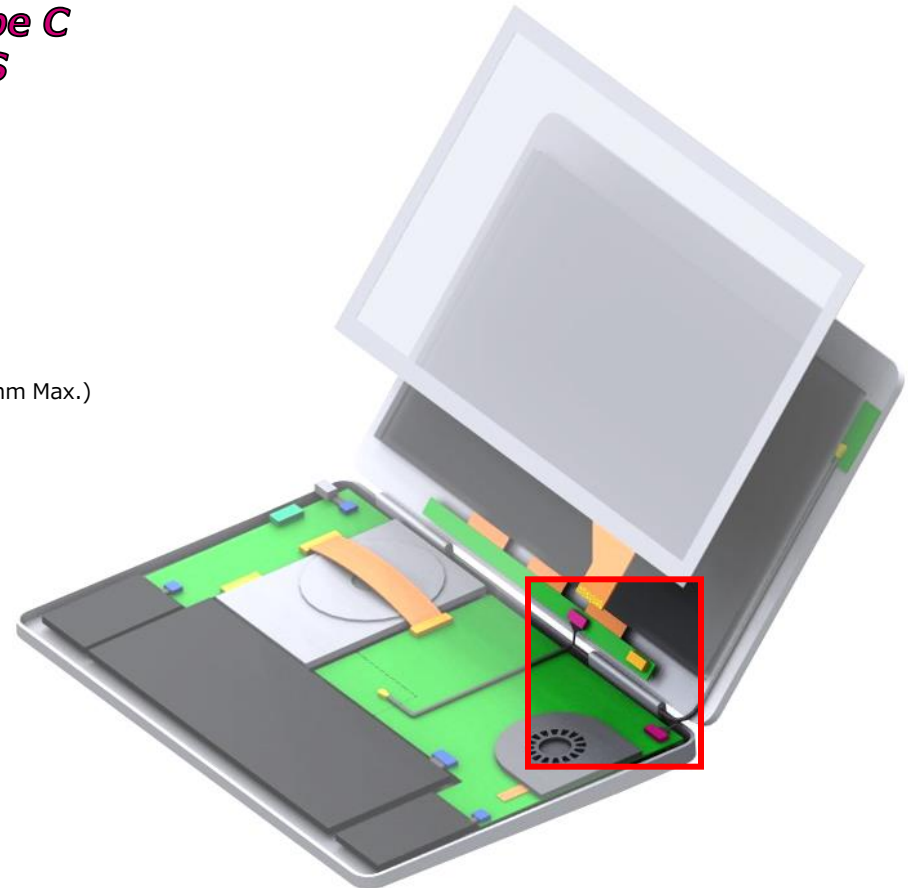
Ultra low-profile connector
Horizontal Mating
Pitch: 0.4mm
Mated Height: 0.7mm
Mated Depth: 4.83mm
Pin Counts: 20, 40pos.
AWG wire: 42-46
(Discrete: 34, 36AWG wire, ϕ 0.37mm Max.)
Rated Current: 0.15-0.25A

KN38



LVDS
eDP

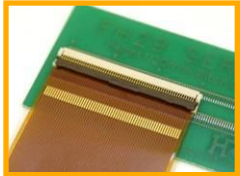
VESA standard
Horizontal Mating
Pitch: 0.5mm
Mated Height: 1.0mm
Mated Depth: 3.95mm
Pin Counts: 30, 40pos.
AWG wire: 32-44
(Discrete: 32, 34AWG wire)
Rated Current: 0.1-0.8A



2. Connectors for Touch Panel Connection

FPC Connector (1-Piece)

FH29DJ



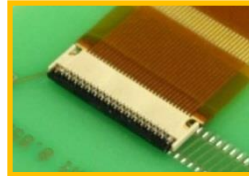
Small size, High pin count
Bottom Contact
Pitch: 0.2mm
Height: 1.2mm
Depth: 4.5mm
Pin Counts: 44-120pos.
Rated Current: 0.25A

FH36W



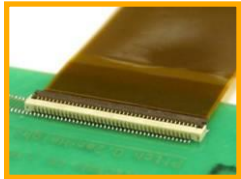
Saves size in depth,
High retention force
Bottom Contact
Pitch: 0.3mm
Height: 0.95mm
Depth: 2.7mm
Pin Counts: 11-61pos.
Rated Current: 0.2A

FH42



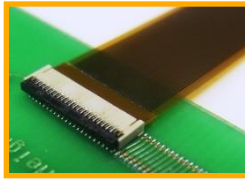
Ultra low profile connector
Top Contact
Pitch: 0.3mm
Height: 0.65mm
Depth: 3.55mm
Pin Counts: 7-51pos.
Rated Current: 0.2A

FH53

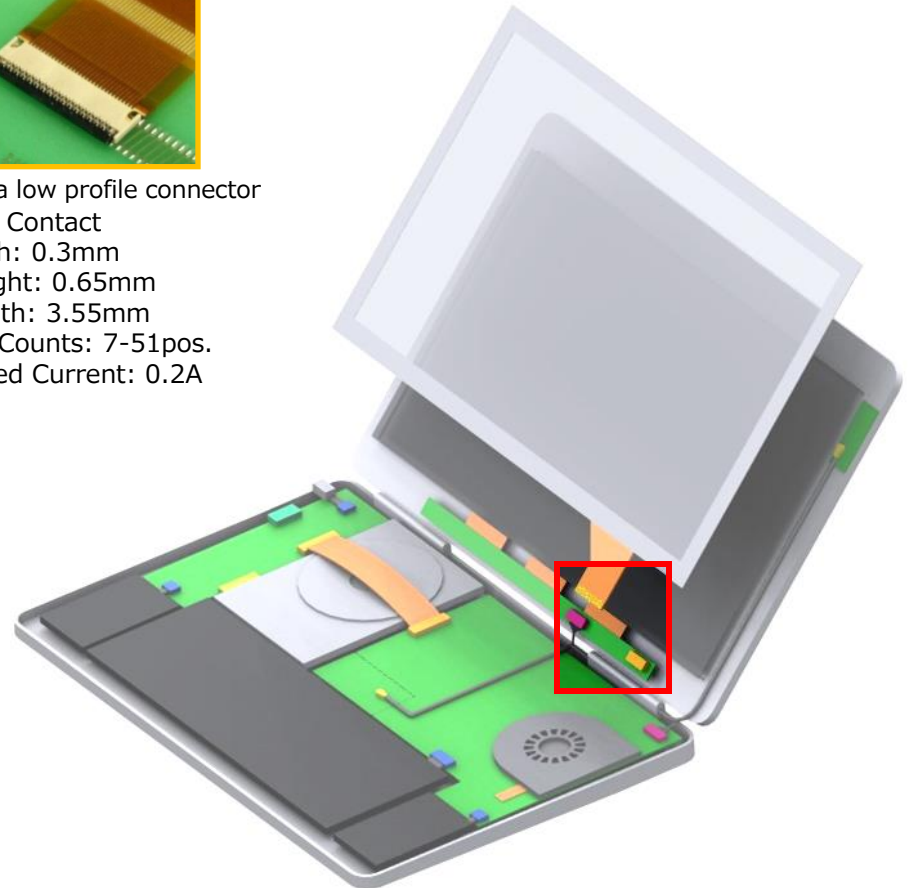


Ultra low-profile,
High density connector
Top Contact
Pitch: 0.2/0.25/0.3mm
Height: 0.65mm
Depth: 3.2mm
Pin Counts: 7-51pos.
Rated Current: 0.2A

FH58/FH58M



Space saving, Multipurpose connector
Top/Bottom Contact
Pitch: 0.2mm/0.25mm
Height: 0.9mm
Depth: 3.1mm
Pin Counts: 7-71pos.
Rated Current: 0.2A



※Variations under development are included. Confirm the latest information through your HRS contact person. (As of October, 2016)

3. Connectors for Module Connection

FPC Connector (1-Piece)

FH19C/SC/D/SD



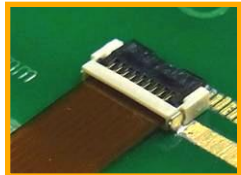
Commonly used for FPC connection
Bottom Contact
Pitch: 0.5mm
Height: 0.9/0.93mm
Depth: 3.0/3.4mm
Pin Counts: 4-50pos.
Rated Current: 0.5A

FH34SRJ



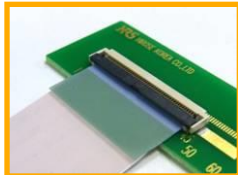
High retention force,
Ideal less pin connection
Bottom Contact
Pitch: 0.5mm
Height: 1.0mm
Depth: 3.2mm
Pin Counts: 4-50pos.
Rated Current: 0.5A

TF13



Back flip, Space saving,
High retention force
Bottom Contact
Pitch: 0.4mm
Height: 0.9mm
Depth: 3.0mm
Pin Counts: 6-20pos.
Rated Current: 0.5A

TF31



FPC/FFC connector
Bottom Contact
Pitch: 0.5/1.0mm
Height: 1.75/2.0mm
Depth: 5.7mm
Pin Counts: 10-55pos.
Rated Current: 0.5A

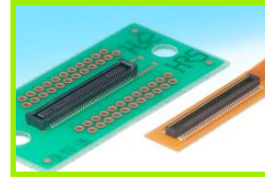
FH62



User-friendly design & High reliability
Top Contact
Pitch: 0.25mm
Height: 1.1mm
Depth: 4.0mm
Pin Counts: 35pos.
Rated Current: 0.2A

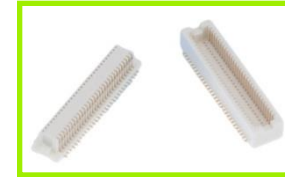
Board-FPC (2-Piece)

DF40

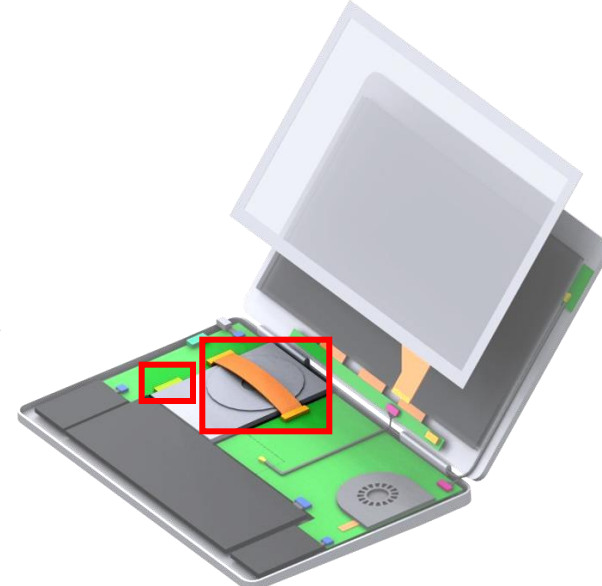


Wide varieties of stacking height
Pitch: 0.4mm
Stacking Height: 1.5-4.0mm
Depth: 2.98/3.38mm
Pin Counts: 10-100pos.
Rated Current: 0.3A

DF12



Wide varieties of stacking height
Pitch: 0.5mm
Stacking Height: 3.0/3.5/4.0/5.0mm
Depth: 4.6mm
Pin Counts: 10-80pos.
Rated Current: 0.3A



3. Connectors for Module Connection (High Speed)

Board-FPC (2-Piece)

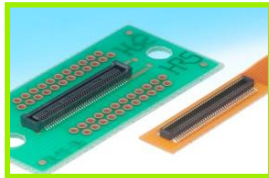
DF40G



USB Type C
SATA 3.0

EMI prevention with shielding
Pitch: 0.4mm
Stacking Height: 1.5/3.0mm
Depth: 3.68mm
Pin Counts: 10-70pos.
Rated Current: 0.3A

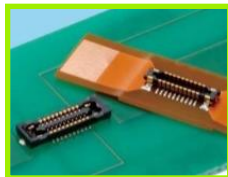
DF40



USB Type C
SATA 3.0

Wide varieties of stacking height
Pitch: 0.4mm
Stacking Height: 1.5-4.5mm
Depth: 2.98/3.38mm
Pin Counts: 10-100pos.
Rated Current: 0.3A

BM24



USB Type C
SATA 2.0

Hybrid connector up to 5A
Pitch: 0.35mm
Stacking Height: 0.8mm
Depth: 2.3mm
Pin Counts: 10-50+2pos.
Rated Current for Power:
5A for power
0.25A for signal

BM28

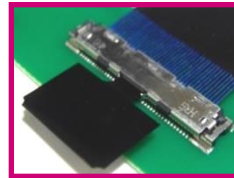


USB Type C
MIPI
eDP

Low profile, Space saving
hybrid connector up to 5A
Pitch: 0.35mm
Stacking Height: 0.6mm
Depth: 1.7mm
Pin Counts: 6-60+2pos.
Rated Current for Power:
5A for power
0.3A for signal

Board-Micro Coaxial

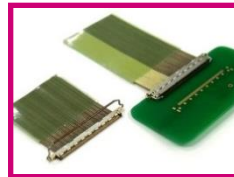
DF80



USB Type C
LVDS
eDP

Space saving,
User-friendly operation
Vertical Mating
Pitch: 0.5mm
Mated Height: 1.72mm
Mated Depth: 5.1mm
Pin Counts: 30, 40, 45, 50pos.
AWG wire: 40-46
(Discrete: 32, 36AWG wire, ø0.5mm Max.)
Rated Current: 0.1-0.5A

DF81

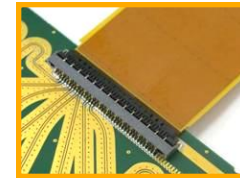


USB Type C
LVDS
eDP
MIPI

Space saving with rotary latch
Horizontal Mating
Pitch: 0.4mm
Mated Height: 0.9mm
Mated Depth: 4.4mm
Pin Counts: 30, 40, 50pos.
AWG wire: 36-46
(Discrete: 34-40AWG wire, ø0.4mm Max.)
Rated Current: 0.1-0.8A

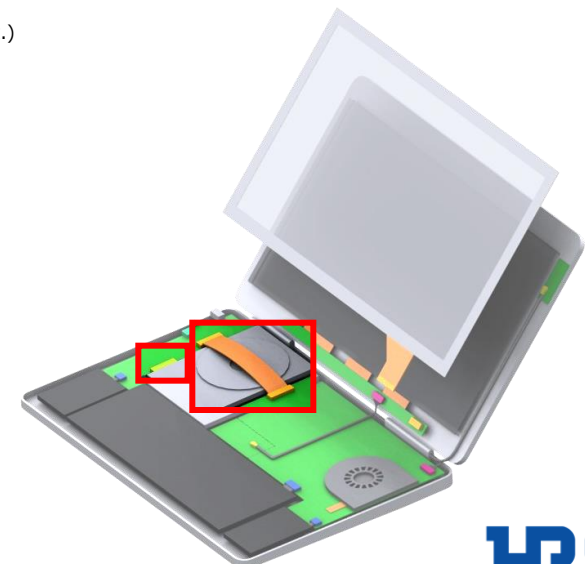
Board-FPC (1-Piece)

FH55/FH55M



USB Type C
SATA Gen.3
PCIe Gen.2

5+Gbps high speed transmission
Bottom Contact
Pitch: 0.5/0.4mm
Height: 1.5mm
Depth: 4.2mm
Pin Counts: 31, 40pos.
Rated Current: 0.5/0.4A



※Variations under development are included. Confirm the latest information through your HRS contact person. (As of October, 2016)

4. Connectors for High Power Connection (Battery / DC Jack)

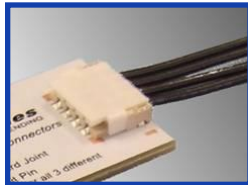
Board-Wire

DF52



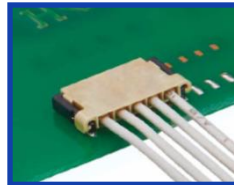
Small size,
High current capability
Pitch: 0.8mm
Stacking Height: 1.75mm
Depth: 4.1mm
Pin Counts: 2-20pos.
Rated Current: 0.8-2.5A

DF59



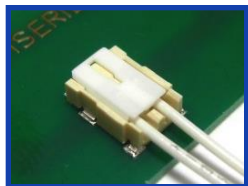
3way system connector
Pitch: 2.0mm
Stacking Height: 2.48mm
Depth: 8.15mm
Pin Counts: 2-4pos.
AWG wire: 22
Rated Current: 3A

DF65



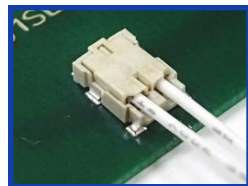
Small size,
High current capability
Pitch: 1.7mm
Stacking Height: 1.8mm
Depth: 6.0mm
Pin Counts: 3-7Pos.
Rated Current: 4A Max.

DF61



Low profile, Swing lock
Pitch: 2.2mm
Stacking Height: 2.38mm
Depth: 7.35mm
Pin Counts: 2pos.
AWG wire: 22-28
Rated Current: 5A Max.

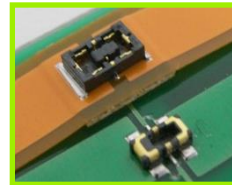
DF61Y



Small size, Vise lock
Pitch: 2.2mm
Stacking Height: 2.0mm
Depth: 7.35mm
Pin Counts: 2pos.
AWG wire: 24-28
Rated Current: 4A Max.

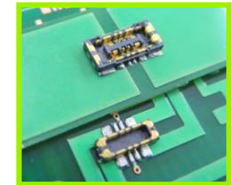
Board-FPC (2-Piece)

BM22

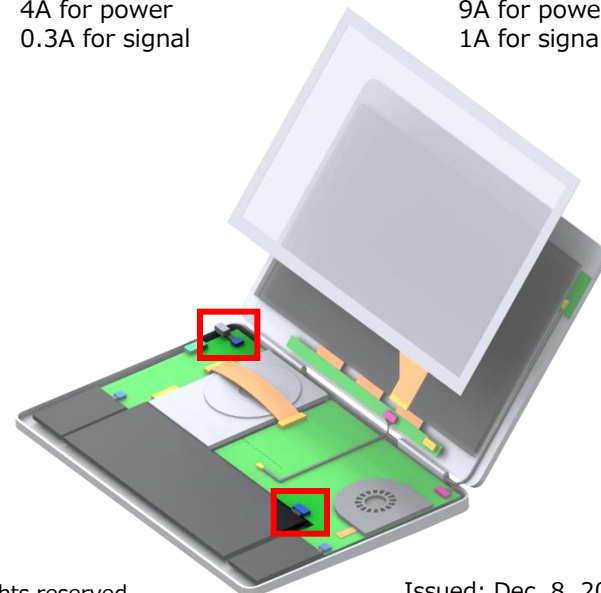


Commonly used for FPC connection
Power Connectors
Stacking Height: 0.9mm
Depth: 2.64mm
Pin Counts: 2+2, 4+2pos.
Rated Current:
4A for power
0.3A for signal

BM25



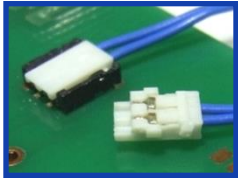
Ideal for the quick charge
Power Connectors
Stacking Height: 0.7mm
Depth: 2.6mm
Pin Counts: 4+2pos.
Rated Current:
9A for power
1A for signal



5. Connectors for Speaker/Microphone/Fan Connection

Board-Wire

DF57H



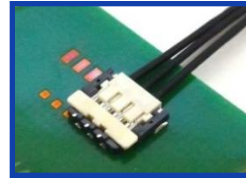
Low profile, Swing lock
Pitch: 1.2mm
Mated Height: 1.4mm
Depth: 4.35mm
Pin Counts: 2-6pos.
AWG wire: 28-34
Rated Current: 0.5-2.5A

DF52



Small size, High current capability
Pitch: 0.8mm
Stacking Height: 1.75mm
Depth: 4.1mm
Pin Counts: 2-20pos.
AWG wire: 28-32
Rated Current: 0.8-2.5A

DF58



World's lowest profile with AWG 28
Pitch: 1.2mm
Stacking Height: 1.0mm
Depth: 4.72mm
Pin Counts: 2-6pos.
AWG wire: 28-30
Rated Current: 1.0-3.0A

Board-FPC (1-Piece)

FH19C/SC/D/SD

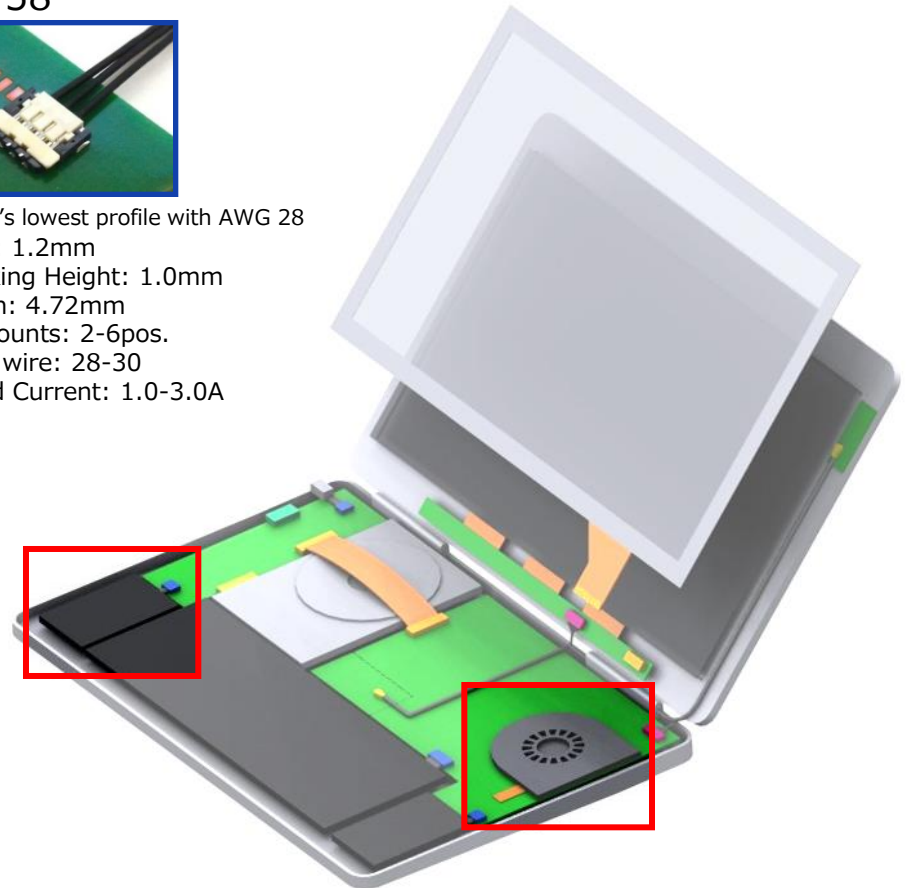


Commonly used for FPC connection
Bottom Contact
Pitch: 0.5mm
Height: 0.9/0.93mm
Depth: 3.0/3.4mm
Pin Counts: 4-50pos.
Rated Current: 0.5A

FH34SRJ



High retention force, Ideal less pin connection
Top /Bottom Contact
Pitch: 0.5mm
Height: 1.0mm
Depth: 3.2mm
Pin Counts: 4-50pos.
Rated Current: 0.5A



6. Connectors for Antenna Connection

Miniature RF Connector

X.FL



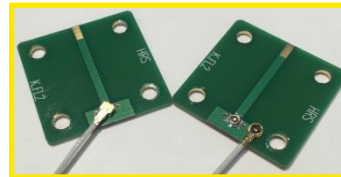
Ultra small size connector
 Mated Height: 1.0mm Max.
 Frequency: DC-12GHz
 V.S.W.R.: 1.7 Max.

X.FL (Low Loss)



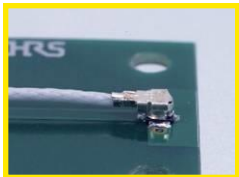
WiGig standard
 Mated Height: 1.3mm Max.
 Frequency: DC-12GHz
 V.S.W.R.: 1.7 Max.

K.FL2



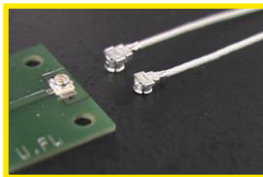
WiFi standard
 Mated Height: 1.2mm Max.
 Frequency: DC-6GHz
 V.S.W.R.: 1.45 Max.

W.FL2

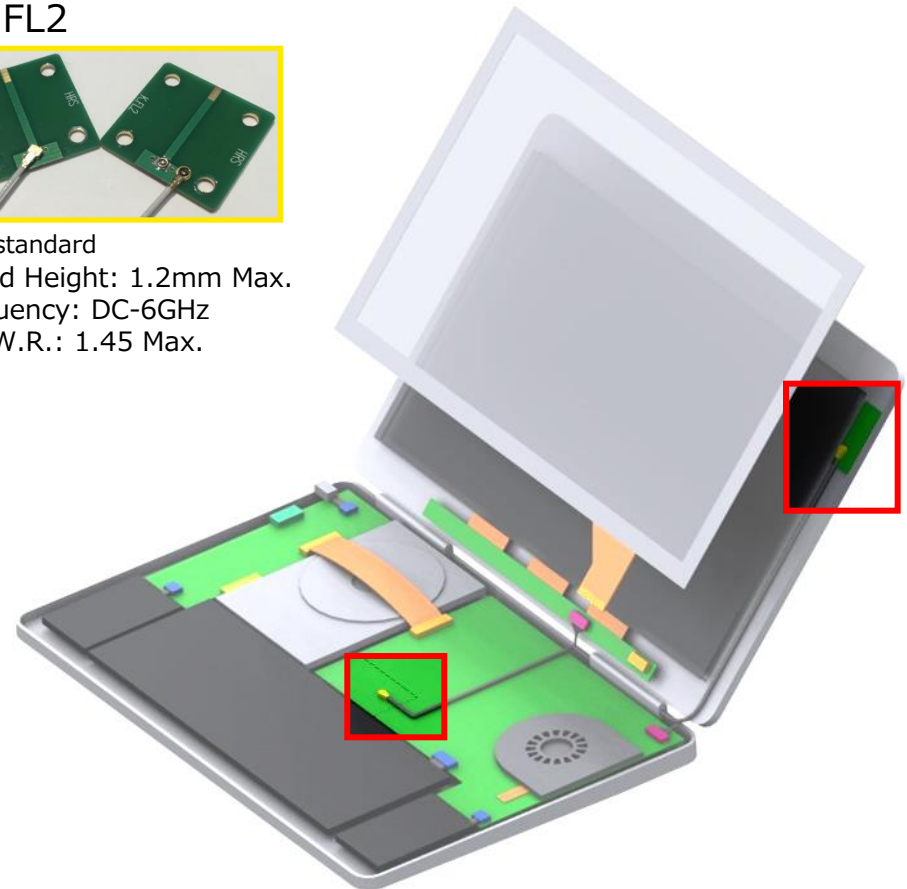


Small size connector
 Mated Height: 1.3mm Max.
 Frequency: DC-6GHz
 V.S.W.R.: 1.4 Max.

U.FL



Commonly used for RF connection
 Mated Height: 2.0/2.5mm Max.
 Frequency: DC-6GHz
 V.S.W.R.: 1.4 Max.



7. Connectors for Interface Connection

I/O Connector

ZX



Micro-USB2.0 Connectors

ZX62W



Micro-USB2.0 Overmolded Type Receptacles for Splash Resistance

ZX360



Micro-USB3.0 Connectors

CX70M



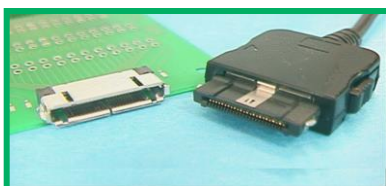
USB Type-C Connectors

LX



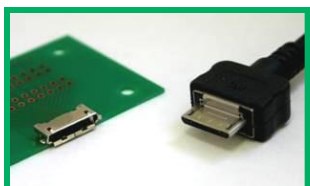
0.5mm Pitch Ultra-low Profile 12, 16 and 20pos.

ST



0.5mm Pitch Space Saving 10, 18, 24 and 36pos.

GX



0.4mm pitch space-saving 18pos.

TM25R



Foldable Open-Close RJ-45 Modular Jack Supports CAT5 Electrical Performance

