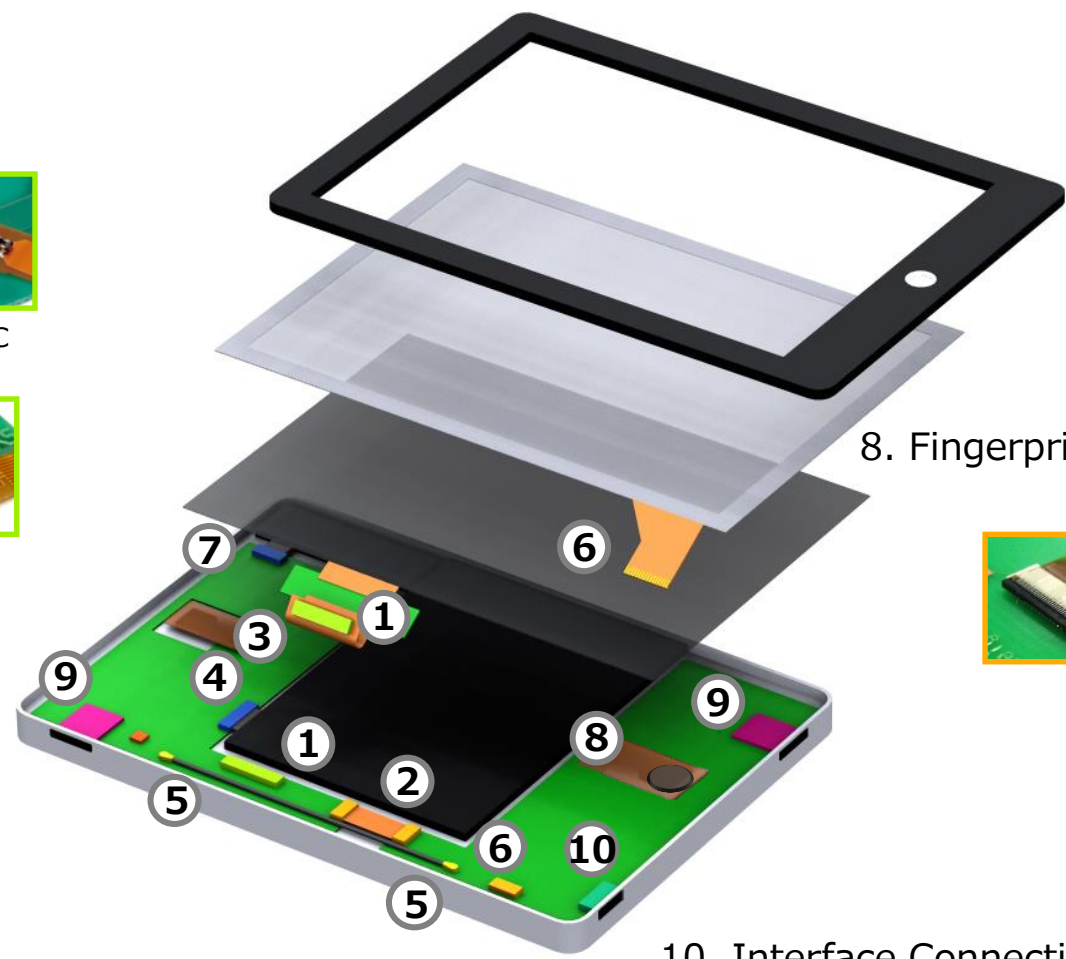
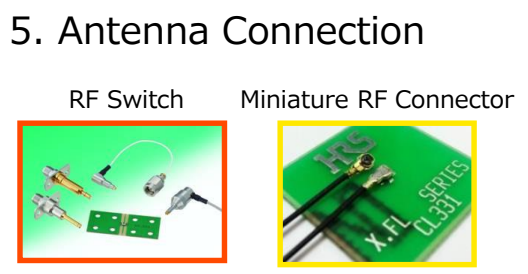
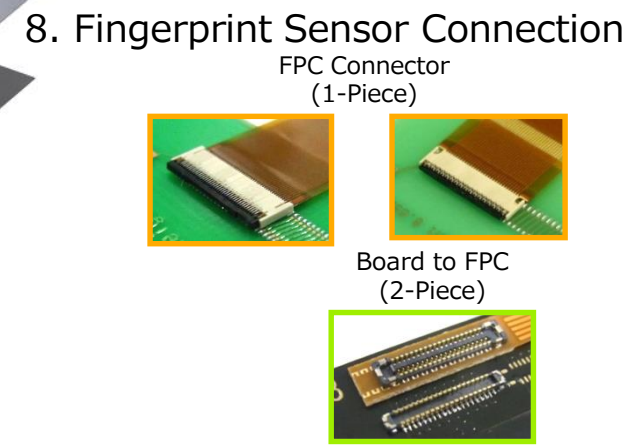
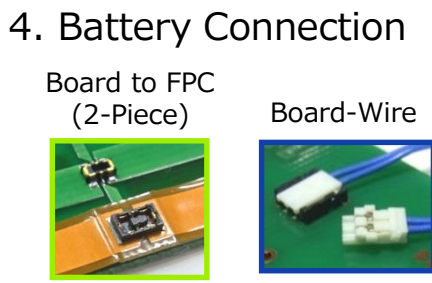
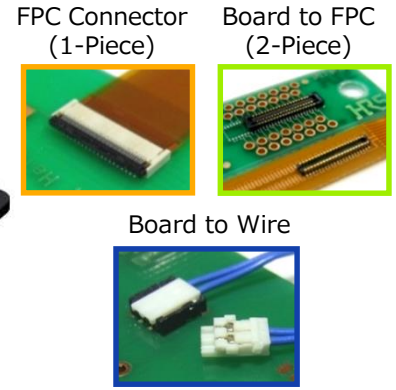
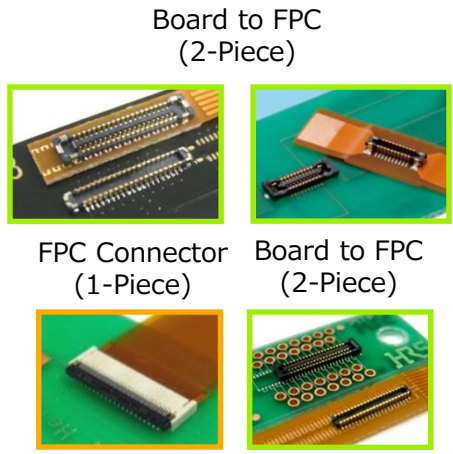


Hirose's Connectors for Smartphone

- 1. LCD Connection
- 2. Main – Sub Board Connection
- 3. Camera Connection

- 6. Touch Panel Connection
- 7. Speaker/Microphone/Side Key Connection

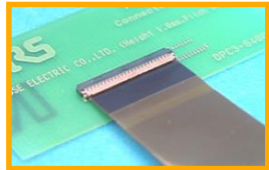


Connectors for

- LCD /
- Main – Sub Board /
- Camera Connection (High-Pin-Count)

Board to FPC (1-Piece)

FH26



Commonly used for FPC connection
Back Flip
Bottom Contact
Pitch: 0.3mm
Height: 1.0mm
Depth: 3.2mm
Pin Counts: 13 to 71pos.
Rated Current: 0.2A

FH35C



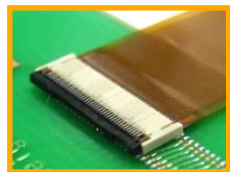
Commonly used for FPC connection
Back Flip
Top/Bottom Contact
Pitch: 0.3mm
Height: 0.9mm
Depth: 3.2mm
Pin Counts: 9 to 61pos.
Rated Current: 0.2A

FH64MA



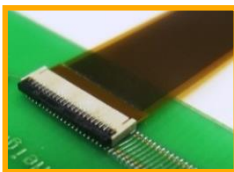
The world's lowest profile
Back Flip
Top contact
Pitch: 0.25mm
Height: 0.5mm
Depth: 3.15mm
Pin Counts: 7 to 21pos.
Rated current: 0.2A

FH53



Super low to profile,
High density connector
Back Flip
Top Contact
Pitch: 0.2/0.25/0.3mm
Height: 0.65mm
Depth: 3.2mm
Pin Counts: 7 to 51pos.
Rated Current: 0.2A

FH58



Space saving,
Multipurpose connector
Back Flip
Top/Bottom Contact
Pitch: 0.2/0.25mm
Height: 0.9mm
Depth: 3.1mm
Pin Counts: 7 to 71pos.
Rated Current: 0.2A

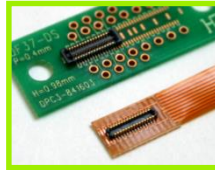
FH62



User to friendly design
& High reliability
One Action Lock
Top Contact
Pitch: 0.25mm
Height: 4.0mm
Depth: 3.2mm
Pin Counts: 35pos.
Rated Current: 0.2A

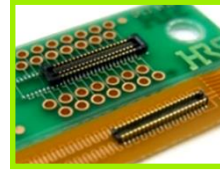
Board to FPC (2-Piece)

DF37



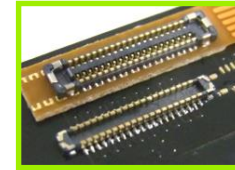
Wide pin count variation
Pitch: 0.4mm
Stacking Height:
0.98/1.5mm
Depth: 2.98mm
Pin Counts: 10 to 80pos.
Rated Current: 0.3A

BM20



Commonly used for FPC connection
Pitch: 0.4mm
Stacking Height:
0.6/0.8mm
Depth: 2.3mm
Pin Counts: 10 to 60pos.
Rated Current: 0.3A

BM23PF



Small, Hybrid connector
Pitch: 0.35mm
Stacking Height: 0.8mm
Depth: 1.98mm
Pin Counts: 6 to 60+4pos.
Rated Current:
4A for power
0.3A for signal

BM24

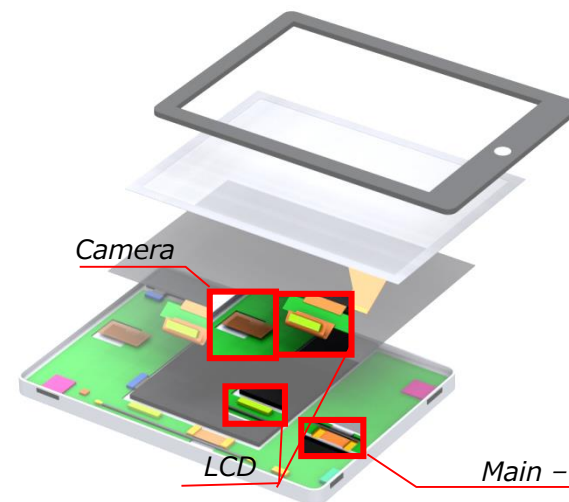


Hybrid connector up to 5A
Pitch: 0.35mm
Stacking Height: 0.8mm
Depth: 2.3mm
Pin Counts:
10 to 50+2pos.
Rated Current:
5A for power
0.25A for signal

BM28



Low profile, Space saving
hybrid connector up to 5A
Pitch: 0.35mm
Stacking Height: 0.6mm
Depth: 1.7mm
Pin Counts: 6 to 60+2pos.
Rated Current:
5A for power
0.3A for signal



Camera

LCD

Main - Sub

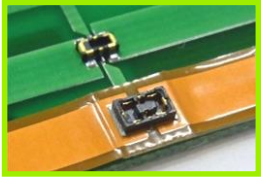


※Variations under development are included. Confirm the latest information through your HRS contact person. (As of Nov. 2017)

4. Connectors for Battery Connection

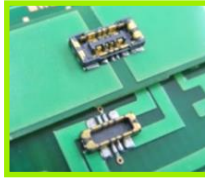
Board to FPC (2-Piece)

BM22



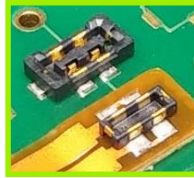
Commonly used for FPC connection
Power Connector
Stacking Height: 0.9mm
Depth: 2.64mm
Pin Counts: 2+2, 4+2pos.
Rated Current:
4A for power
0.3A for signal

BM25



Ideal for the quick charge
Power Connector
Stacking Height: 0.7mm
Depth: 2.6mm
Pin Counts: 4+2pos.
Rated Current:
10A for power
0.3A for signal

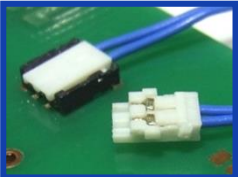
KN14



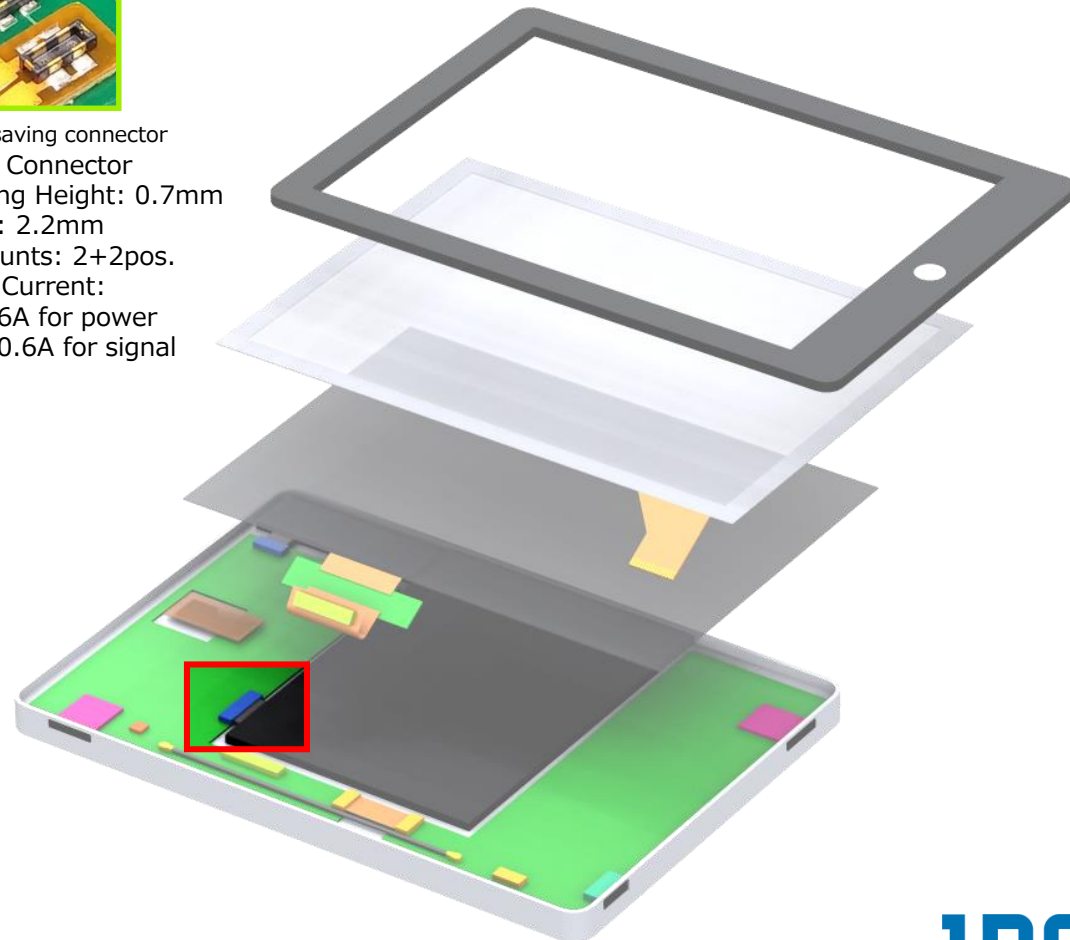
Space saving connector
Power Connector
Stacking Height: 0.7mm
Depth: 2.2mm
Pin Counts: 2+2pos.
Rated Current:
6A for power
0.6A for signal

Board to Wire

DF57H



Low profile, Swing lock
Pitch: 1.2mm
Mated Height: 1.4mm
Depth: 4.35mm
Pin Counts: 2 to 6pos.
AWG wire: 28 to 34
Rated Current: 0.5 to 2.5A



5. Connectors for Antenna Connection

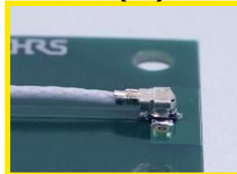
Miniature RF Connector

X.FL(V)



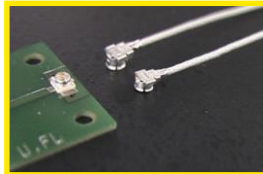
Excellent high frequency characteristics
 Mated Height: 1.0mm Max.
 Frequency: DC to 12GHz
 V.S.W.R.: 1.6 Max.

W.FL2(A)



Commonly used for RF connector
 Mated Height: 1.3mm Max.
 Frequency: DC to 12GHz
 V.S.W.R.: 1.6 Max.

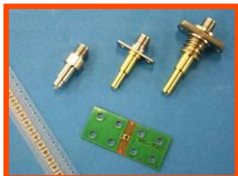
U.FL(A)



Excellent high frequency
 Mated height: 2.2mm Max.
 Frequency: DC to 18GHz
 V.S.W.R. : 1.6 Max.

RF Switch

MS-156C



Commonly used for RF switch
 Height: 1.35mm
 Frequency: DC to 11GHz
 V.S.W.R.: 1.5 Max.

MS-180

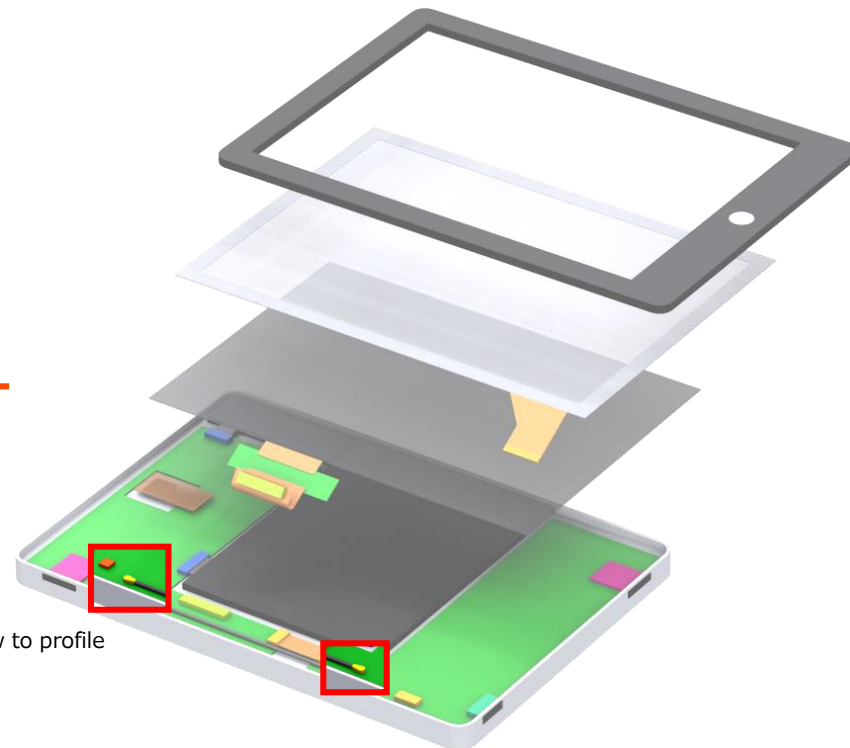


Small switch for checking terminal
 Height: 0.85mm
 Frequency: DC to 11GHz
 V.S.W.R.: 1.4 Max.

MS-190



The world's smallest, Ultra low to profile
 Height: 0.68mm
 Frequency: DC to 11GHz
 V.S.W.R. : 1.4 Max.

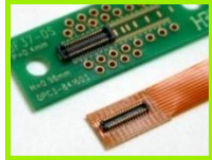


6.Touch Panel

7. Connectors for Speaker/Microphone/ Side Key Connection (Low to Pin to Count)

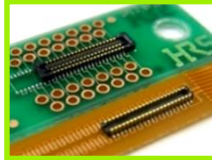
Board to FPC (2-Piece)

DF37



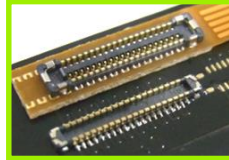
Wide pin count variation
Pitch: 0.4mm
Stacking Height:
0.98/1.5mm
Depth: 2.98mm
Pin Counts: 10 to 80pos.
Rated Current: 0.3A

BM20



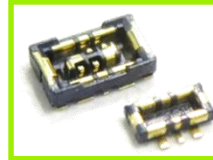
Commonly used for FPC connector
Pitch: 0.4mm
Stacking Height:
0.6/0.8mm
Depth: 2.3mm
Pin Counts: 10 to 60pos.
Rated Current: 0.3A

BM23FR



Small,
Multipurpose connector
Pitch: 0.35mm
Stacking Height:
0.6/0.8mm
Depth: 1.98mm
Pin Counts: 6 to 60pos.
Rated Current: 0.3A

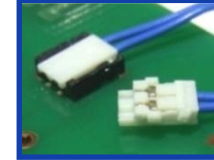
BM29



Ultra small hybrid connector
Pitch: 0.35mm
Stacking Height: 0.6mm
Depth: 1.5mm
Pin Counts: 2+2pos.
Rated Current:
3A for power
0.3A for signal

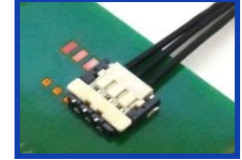
Board to Wire

DF57H



Low profile, Swing lock
Pitch: 1.2mm
Mated Height: 1.4mm
Depth: 4.35mm
Pin Counts: 2 to 6pos.
AWG wire: 28 to 34
Rated Current: 0.5 to 2.5A

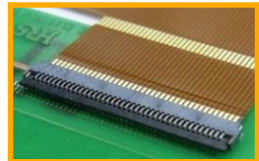
DF58



The world's lowest profile
with 28 AWG
Pitch: 1.2mm
Mated Height: 1.0mm
Depth: 4.72mm
Pin Counts: 2 to 6pos.
AWG wire: 28 to 30
Rated Current: 1.0 to 3.0A

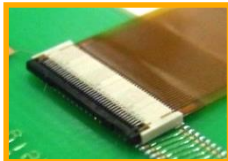
Board-FPC (1-Piece)

FH34SRJ



High retention force,
Ideal less pin connection
Back Flip
Top/Bottom Contact
Pitch: 0.5mm
Height: 1.0mm
Depth: 3.2mm
Pin Counts: 4 to 50pos.
Rated Current: 0.5A

FH53

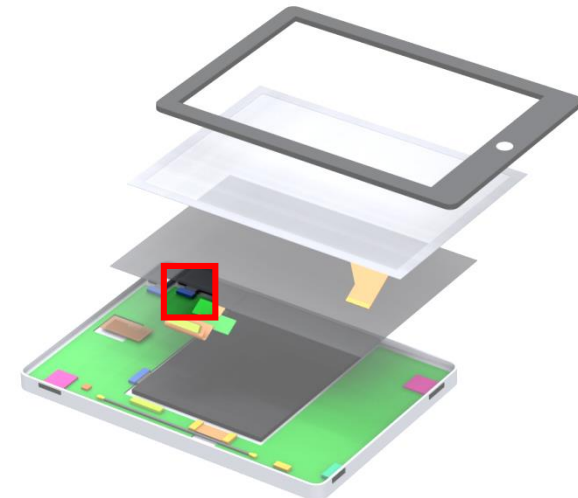


Ultra low to profile,
High density connector
Back Flip
Top Contact
Pitch: 0.2/0.25/0.3mm
Height: 0.65mm
Depth: 3.2mm
Pin Counts: 7 to 51pos.
Rated Current: 0.2A

FH64MA



The world's lowest profile
Back Flip
Top Contact
Pitch: 0.25mm
Height: 0.5mm
Depth: 3.15mm
Pin Counts: 7 to 21pos.
Rated Current: 0.2A

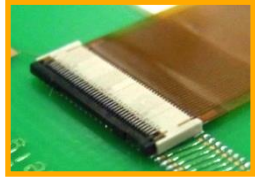


※Variations under development are included. Confirm the latest information through your HRS contact person. (As of Nov. 2017)

8. Connectors for Fingerprint Sensor

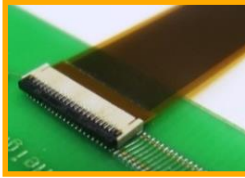
FPC Connector (1-Piece)

FH53



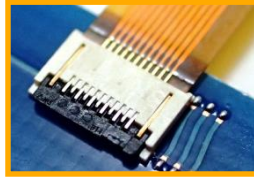
Ultra low to profile,
High density connector
Back Flip
Top Contact
Pitch: 0.2/0.25/0.3mm
Height: 0.65mm
Depth: 3.2mm
Pin Counts: 7 to 51pos.
Rated Current: 0.2A

FH58



Space saving,
Multipurpose connector
Back Flip
Top/Bottom Contact
Pitch: 0.2/0.25mm
Height: 0.9mm
Depth: 3.1mm
Pin Counts: 7 to 71pos.
Rated Current: 0.2A

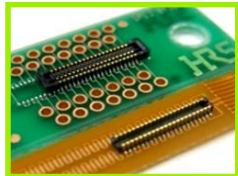
FH64MA



The world's lowest profile
Back Flip
Top Contact
Pitch: 0.25mm
Height: 0.5mm
Depth: 3.15mm
Pin Counts: 7 to 21pos.
Rated Current: 0.2A

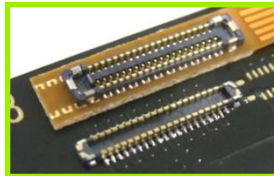
Board to FPC (2-Piece)

BM20

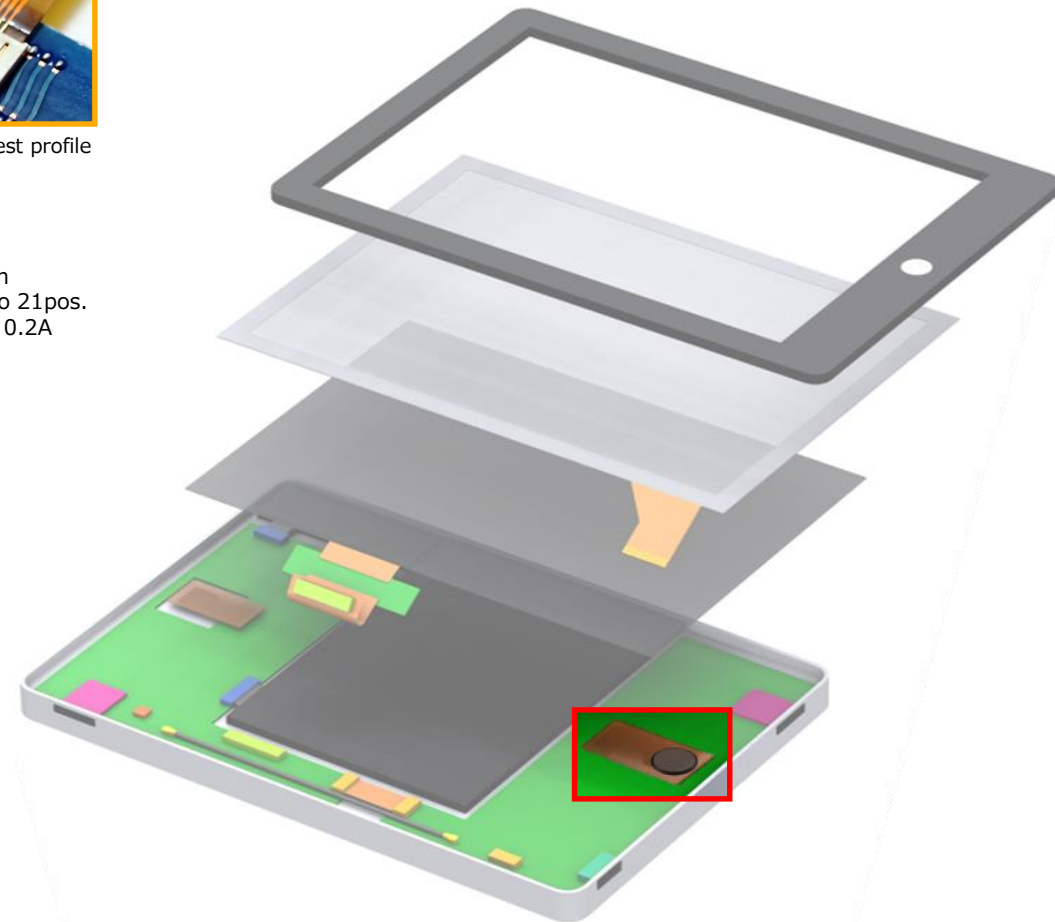


Commonly used for FPC connector
Pitch: 0.4mm
Stacking Height:
0.6/0.8mm
Depth: 2.3mm
Pin Counts: 10 to 60pos.
Rated Current: 0.3A

BM23FR



Small, Multipurpose connector
Pitch: 0.35mm
Stacking Height: 0.6/0.8mm
Depth: 1.98mm
Pin Counts: 6 to 60pos.
Rated Current: 0.3A

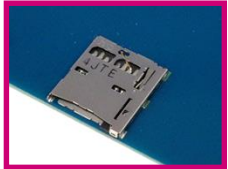


※Variations under development are included. Confirm the latest information through your HRS contact person. (As of Nov. 2017)

9. Card Connectors

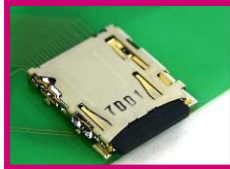
Micro SD card

DM3N



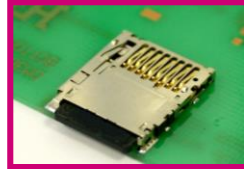
Push-push type
Top mount
Height : 1.25mm
Size : 13.4×15.3

DM3AT



Push-push type
Top mount
Height : 1.68mm
Size : 13.4×15.3

DM3BT



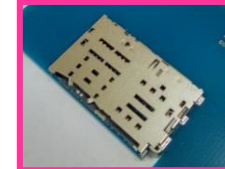
Push-push type
Bottom mount
Height : 1.83mm
Size : 13.85×16.05

KP15B



Push-pull type
Top mount
Height : 2.00mm
Size : 11.9×17.9

KP15TL



Tray type
Top mount
Height : 1.37mm
Size : 28.4×17.9

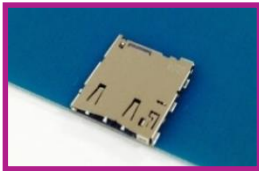
KP15TB



Tray type
Top mount
Height : 1.55mm
Size : 18.8×28.25

Nano SIM

KP13TS



Tray type
Top mount
Height : 1.45mm
Size : 15.1mm×16.95

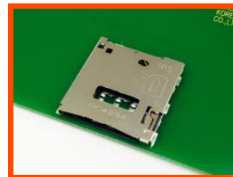
KP13C



Push-pull type
Top mount
Height : 1.12mm
Size : 10.45×12.15

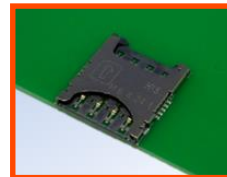
Micro SIM card

KP10S

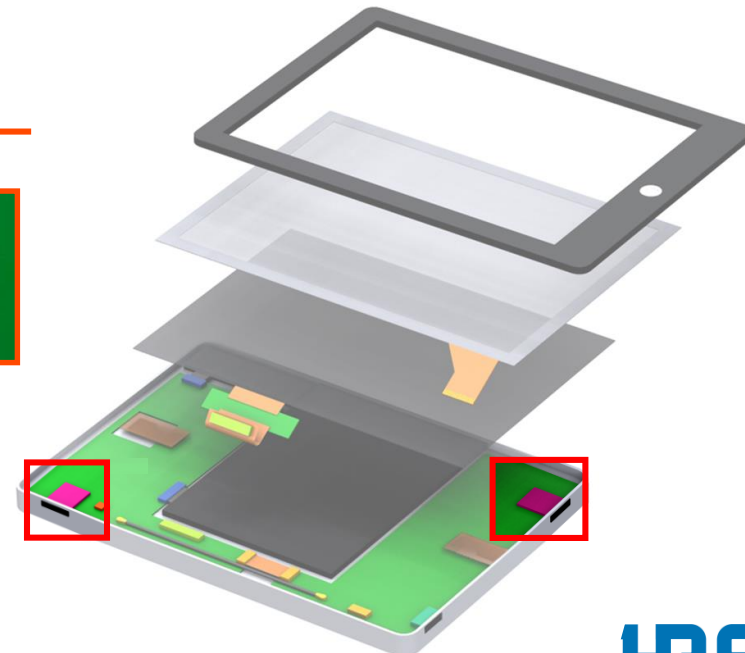


Push-push type
Top mount
Height : 1.18mm
Size : 14.6×15.8

KP10BH



Push-pull type
Top mount
Height : 1.18mm
Size : 13.2×15.1



*All products have detection switch

10. Connectors for Interface Connection

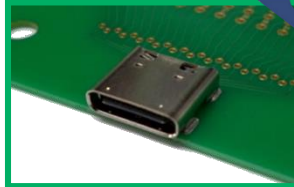
I/O Connector

CX70M series



USB Type-C connector
USB3.1 Gen1
Mid-mount
Space saving

CX90B1



USB Type-C connector
USB3.1 Gen2
On-board
Robust

ZX



Micro to USB2.0 Connector

ZX62W



Overmolded Type Micro to USB2.0
receptacles for splash resistance

